



COMUNE DI CASTANO PRIMO

RILIEVI FONOMETRICI

Il Tecnico Competente
Dott. Ing. Marco Porta

OTTOBRE 2009

ELENCO DEI PUNTI OGGETTO DEL RILIEVO:

1	Piazzale Don Milani - Scuole Torno - sede <u>Posizione:</u> parcheggio esterno scuole
2	Provinciale 34 dir – via per Turbigo <u>Posizione:</u> concessionaria Peugeot
3	Strada Statale 341 – Via Gallarate angolo Via R. Sanzio <u>Posizione:</u> ciglio strada
4	Via Ariosto angolo Via Madonna di Gree' <u>Posizione:</u> ciglio strada
5	Via Oleggio angolo Via Beato Angelico <u>Posizione:</u> civico 38
6	P.zza Mazzini <u>Posizione:</u> lato della piazza
7	Via della Resistenza <u>Posizione:</u> parcheggio centro commerciale
8	Casa Riposo S. Giuseppe Opera Don Guanella Via Arco Nuovo 14

9	Casa Riposo Fondazione Opera Pia F. Colleoni Via Colleoni 18
10	Strada Statale 341 <u>Posizione:</u> lato opposto Conceria Stefania
11	Strada Provinciale 34 Via Per Buscate angolo via Nitti <u>Posizione:</u> ciglio strada
12	Strada Provinciale 32 Via Oleggio - Cascine <u>Posizione:</u> ciglio strada
12	Strada Provinciale 32 Via Oleggio <u>Posizione:</u> ciglio strada
12	Strada Provinciale 32 Via Oleggio <u>Posizione:</u> ciglio strada
13	Cava TICITER <u>Posizione:</u> ciglio strada - ingresso
14	Via Baracca – Via Lamarmora <u>Posizione:</u> ciglio strada
15	Via Mantegna – Campo sportivo <u>Posizione:</u> ciglio strada
16	Via Mameli – Asilo <u>Posizione:</u> parcheggio

17	Via Giolitti - Scuole <u>Posizione</u> : parcheggio scuole
18	Via Colleoni <u>Posizione</u> : lato canale
19	Via San Antonio <u>Posizione</u> : scuole succursale
20	Via Moroni - scuole medie Acerbi <u>Posizione</u> : ciglio strada
21	Via Malvaglio <u>Posizione</u> : lato Litografia
22	Via Campioni <u>Posizione</u> : lato ferrovia FNME

Punto nr. 1

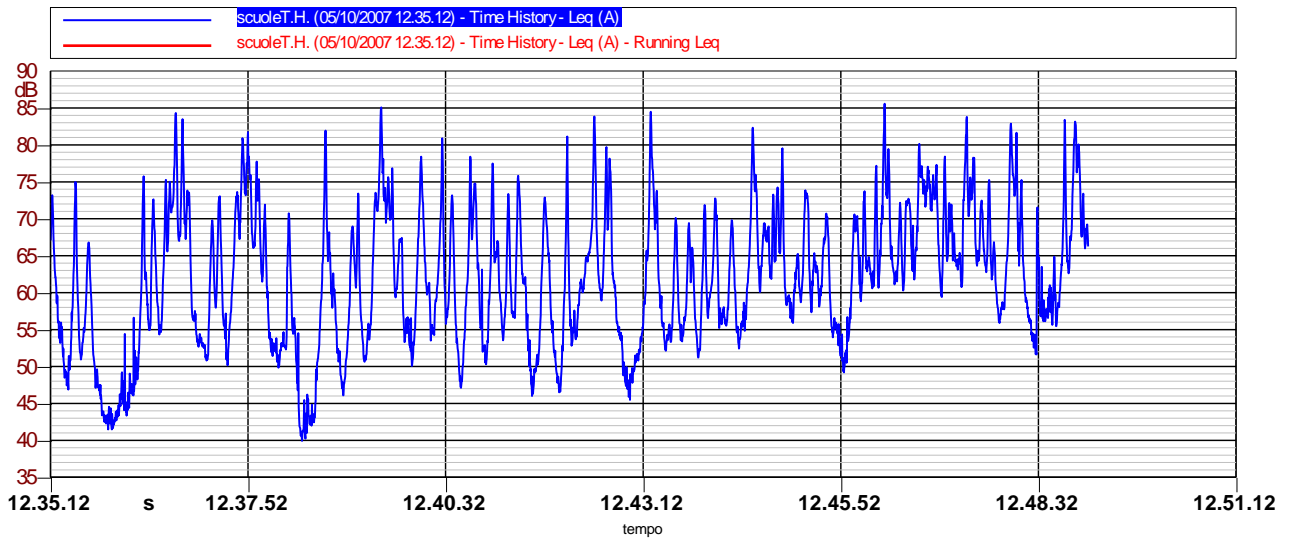
Scuole Torno - sede

Posizione: parcheggio esterno scuole

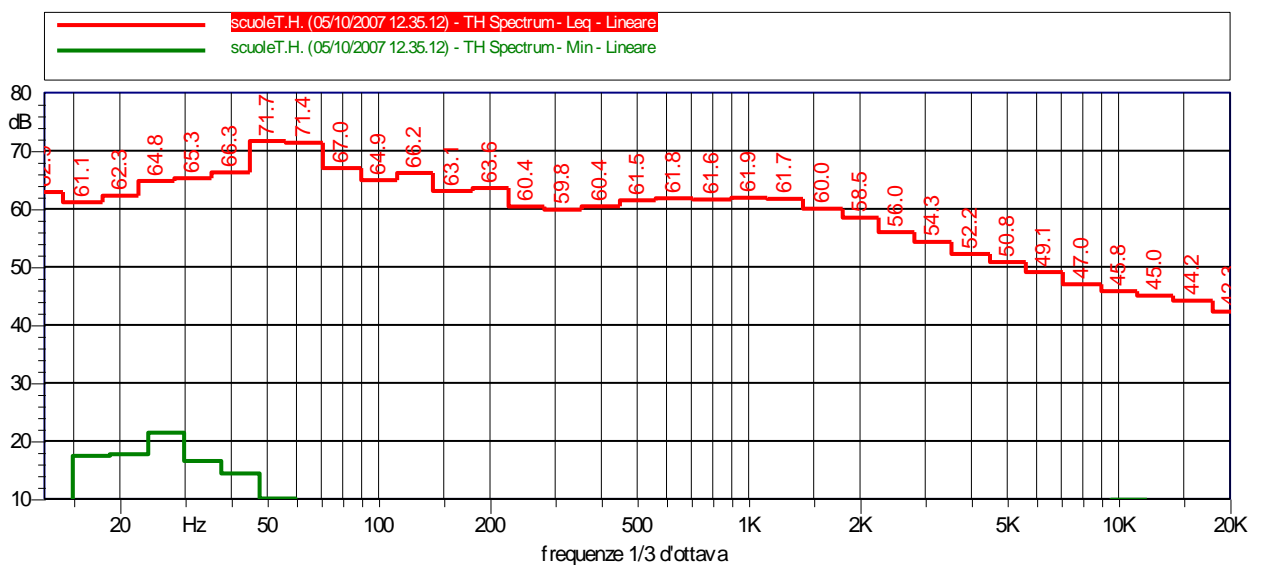
Rilievi diurni e notturni



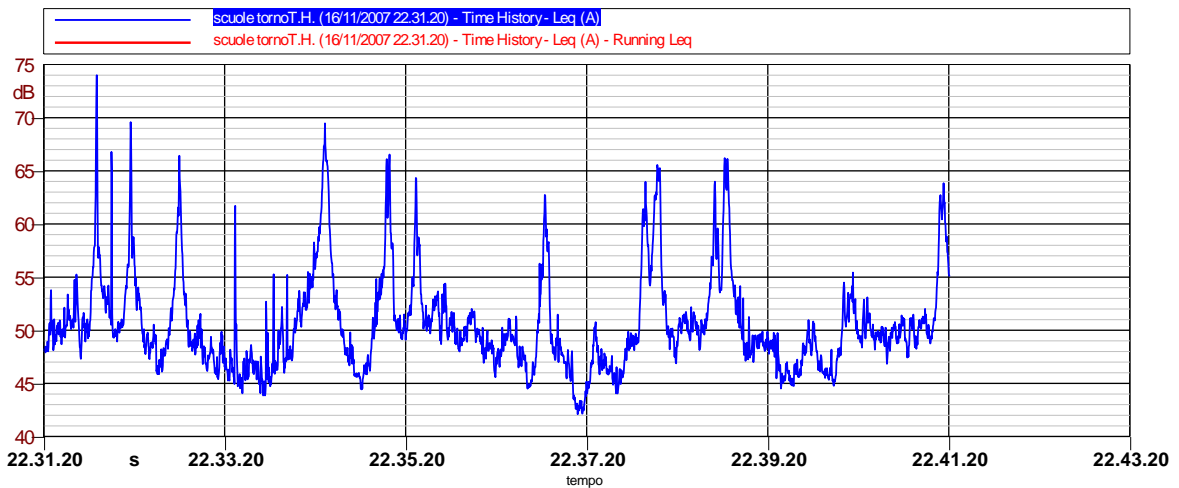
Nome: scuoleT.H. (05/10/2007 12.35.12)		Allegato 1
Annotazioni: giorno	Data: 05/10/2007	Ora: 12.35.12
	Località: Castano Primo	
	Operatore: Ing. M. Porta	
Durata Misura: 840.3 sec	Strumentazione: Larson-Davis 824	



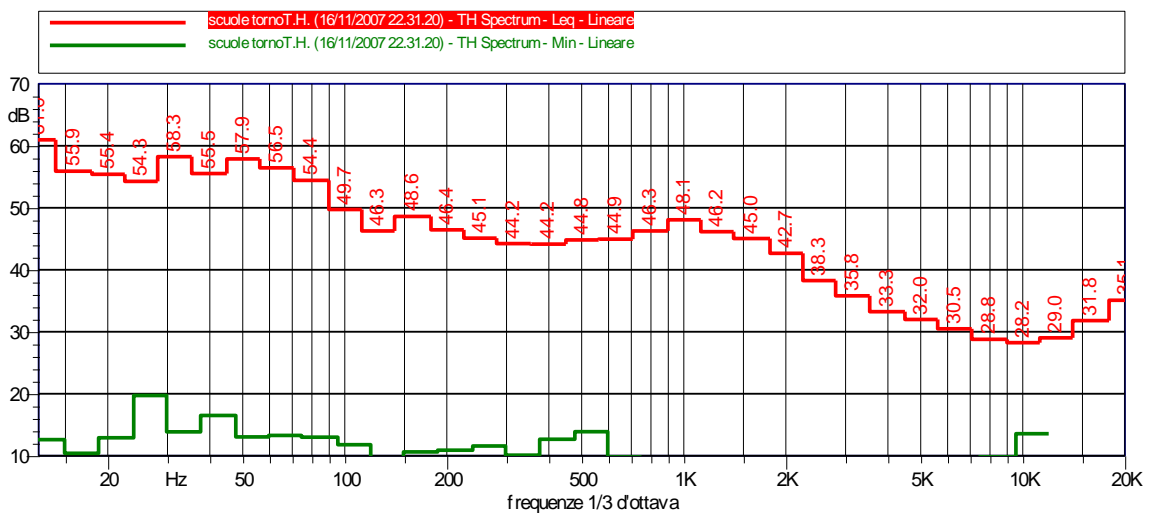
<i>L_{Aeq}</i>	<i>L_{ASmax}</i>	<i>L_{AFmax}</i>	<i>LN01</i>	<i>LN10</i>	<i>LN50</i>	<i>LN90</i>	<i>LN95</i>
70.2A	83.1 dBA	85.8 dBA	81.9 dBA	73.8 dBA	61.6 dBA	50.2 dBA	46.9 dBA



Nome: scuole tornoT.H. (16/11/2007 22.31.20)		Allegato 1
Annotazioni: notte	Data: 16/11/2007	Ora: 22.31.20
	Località: CASTANO PRIMO	
	Operatore: Ing. M. Porta	
Durata Misura: 600.6 sec	Strumentazione: Larson-Davis 824	



LAeq	LASmax	LAFmax	LN01	LN10	LN50	LN90	LN95
54.6A	70.0 dBA	74.0 dBA	65.7 dBA	57.2 dBA	49.5 dBA	45.9 dBA	45.2 dBA



Punto nr. 2

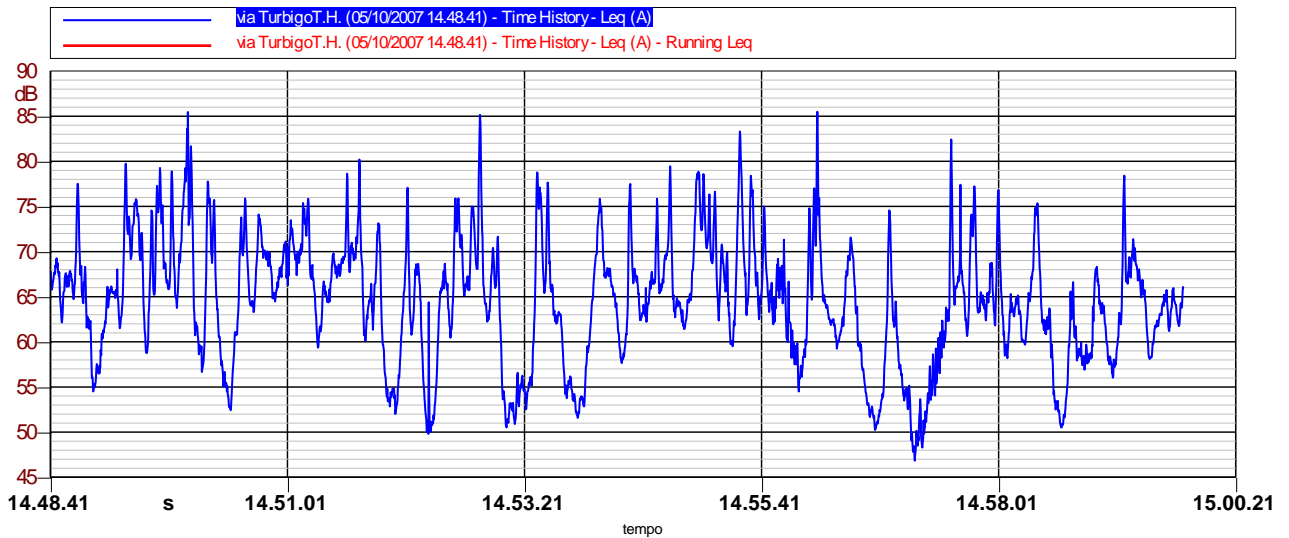
Provinciale 34 dir – via per Turbigo

Posizione: concessionaria Peugeot

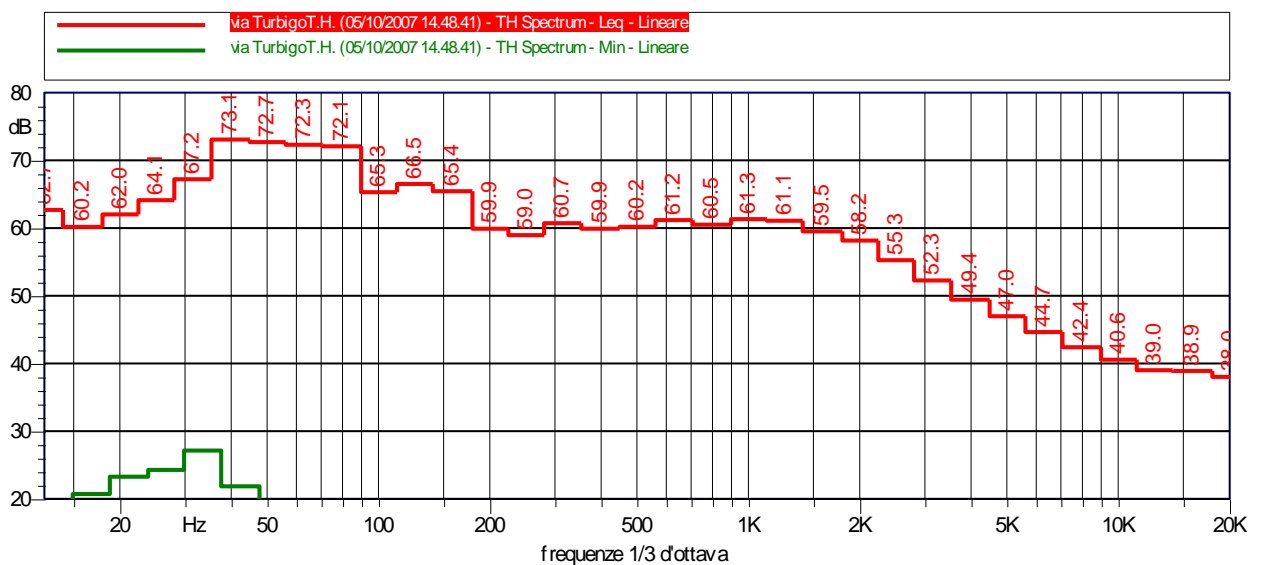
Rilievi diurni e notturni (due rilievi)



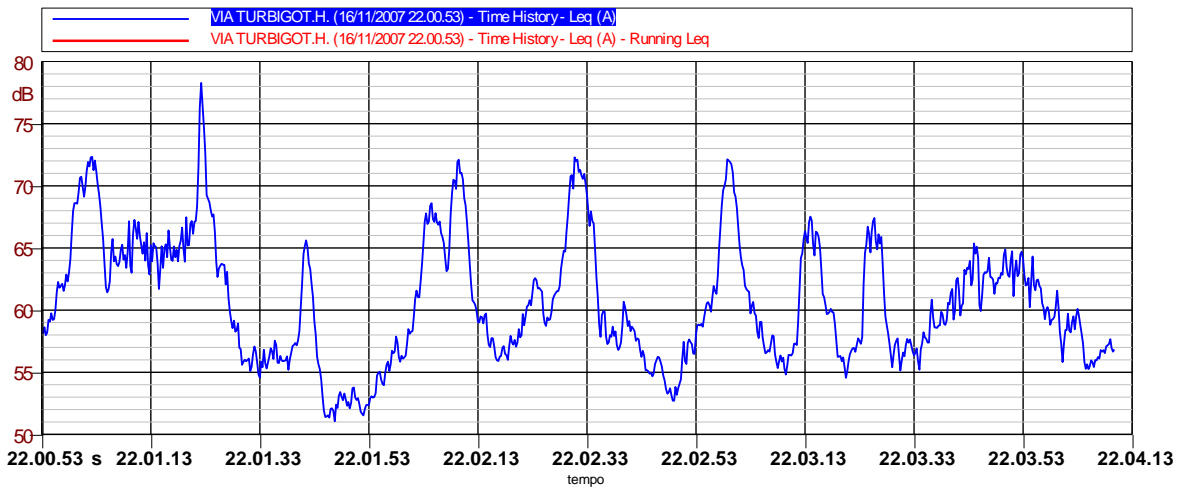
Nome: via TurbigoT.H. (05/10/2007 14.48.41)		Allegato 1
Annotazioni: giorno	Data: 05/10/2007	Ora: 14.48.41
	Località: Castano Primo	
	Operatore: Ing. M. Porta	
Durata Misura: 669.3 sec	Strumentazione: Larson-Davis 824	



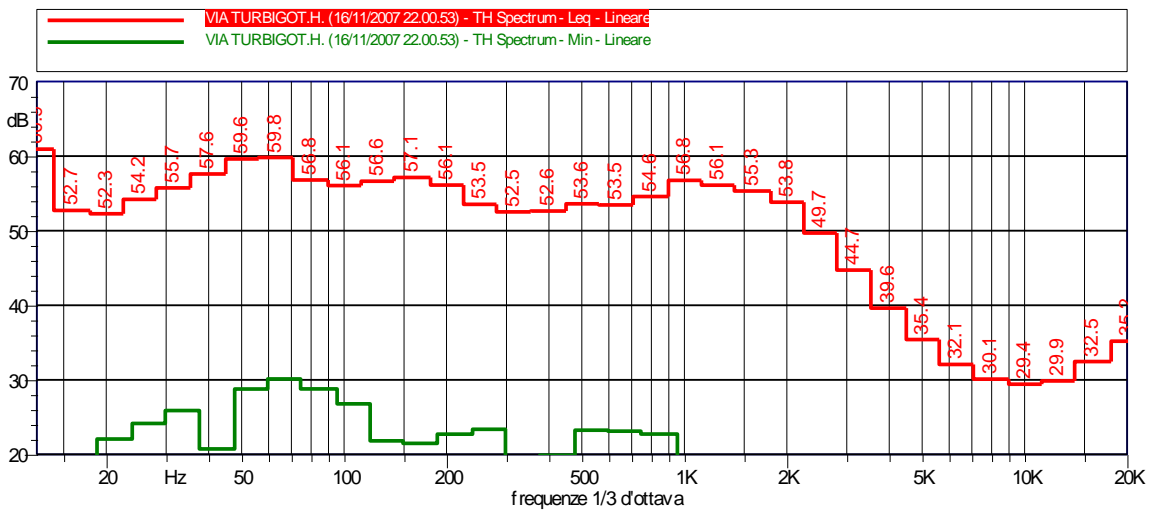
<i>LAeq</i>	<i>LASmax</i>	<i>LAFmax</i>	<i>LN01</i>	<i>LN10</i>	<i>LN50</i>	<i>LN90</i>	<i>LN95</i>
69.5A	82.3 dBA	85.9 dBA	79.1 dBA	73.5 dBA	64.7 dBA	54.5 dBA	52.6 dBA



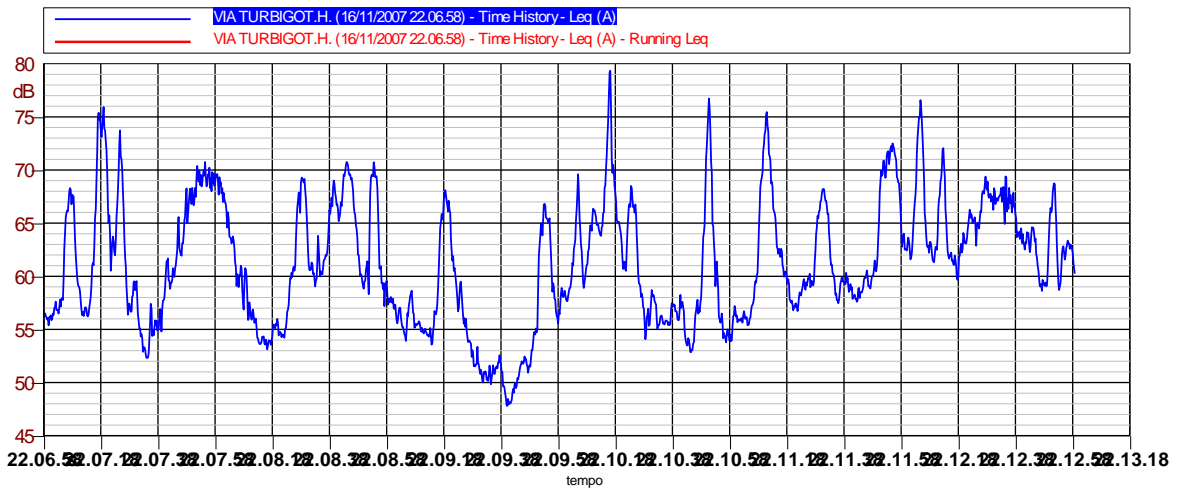
Nome: VIA TURBIGOT.H. (16/11/2007 22.00.53)		Allegato 1
Annotazioni: notte	Data: 16/11/2007	Ora: 22.00.53
	Località: CASTANO PRIMO	
	Operatore: Ing. M. Porta	
Durata Misura: 196.8 sec	Strumentazione: Larson-Davis 824	



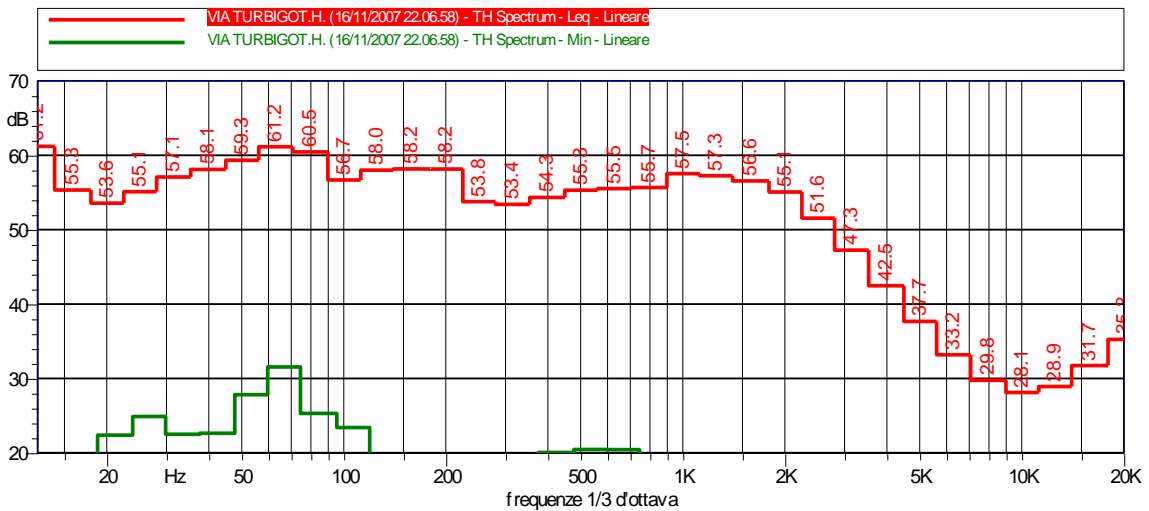
LAeq	LASmax	LAFmax	LN01	LN10	LN50	LN90	LN95
63.9A	75.0 dBA	78.3 dBA	72.1 dBA	67.5 dBA	59.7 dBA	55.2 dBA	53.3 dBA



Nome: VIA TURBIGOT.H. (16/11/2007 22.06.58)		Allegato 1
Annotazioni: bis notte	Data: 16/11/2007	Ora: 22.06.58
	Località: CASTANO PRIMO	
	Operatore: Ing. M. Porta	
Durata Misura: 360.8 sec	Strumentazione: Larson-Davis 824	



LAeq	LASmax	LAFmax	LN01	LN10	LN50	LN90	LN95
65.2A	76.8 dBA	79.6 dBA	74.9 dBA	69.0 dBA	60.6 dBA	54.2 dBA	52.0 dBA



Punto nr. 3

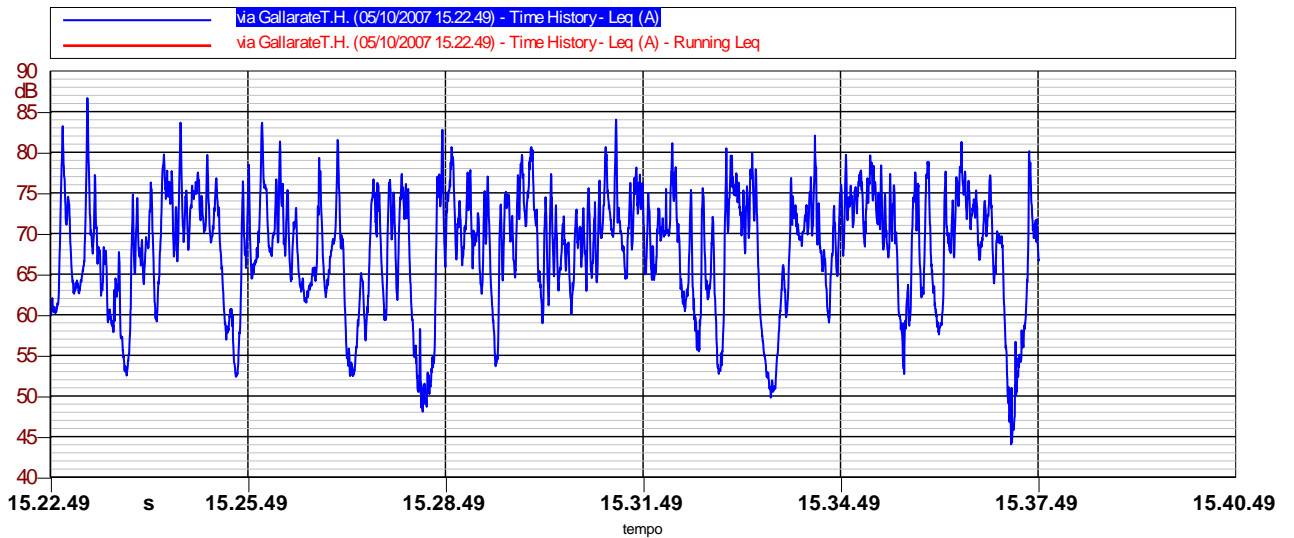
Strada Statale 341 – Via Gallarate angolo Via R. Sanzio

Posizione: ciglio strada

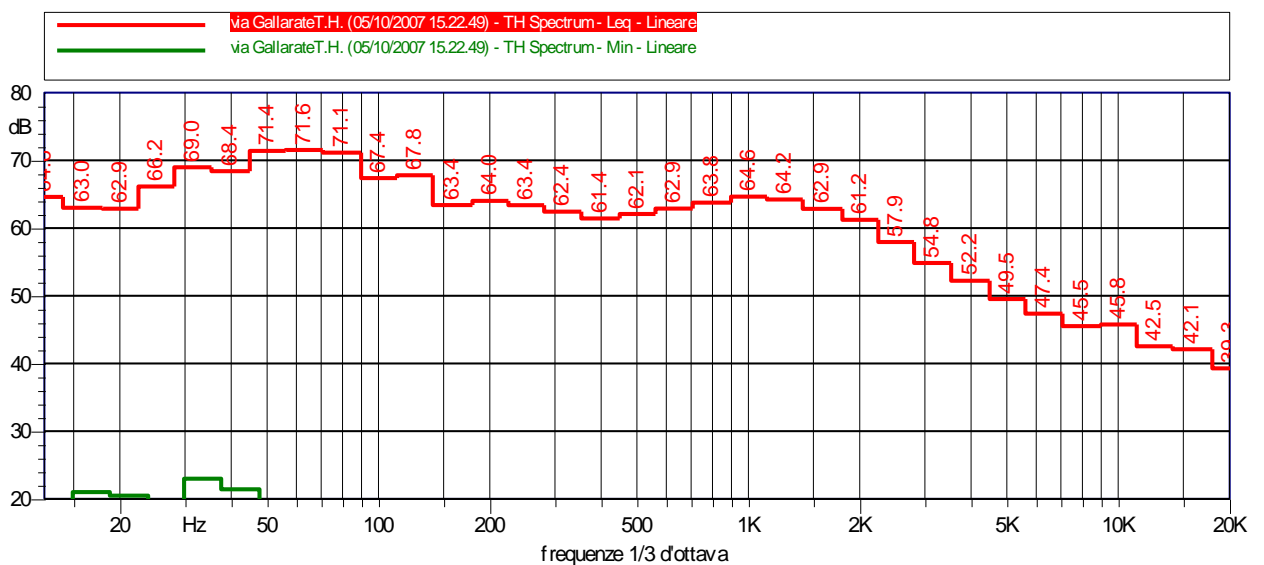
Rilievi diurni e notturni (due rilievi)



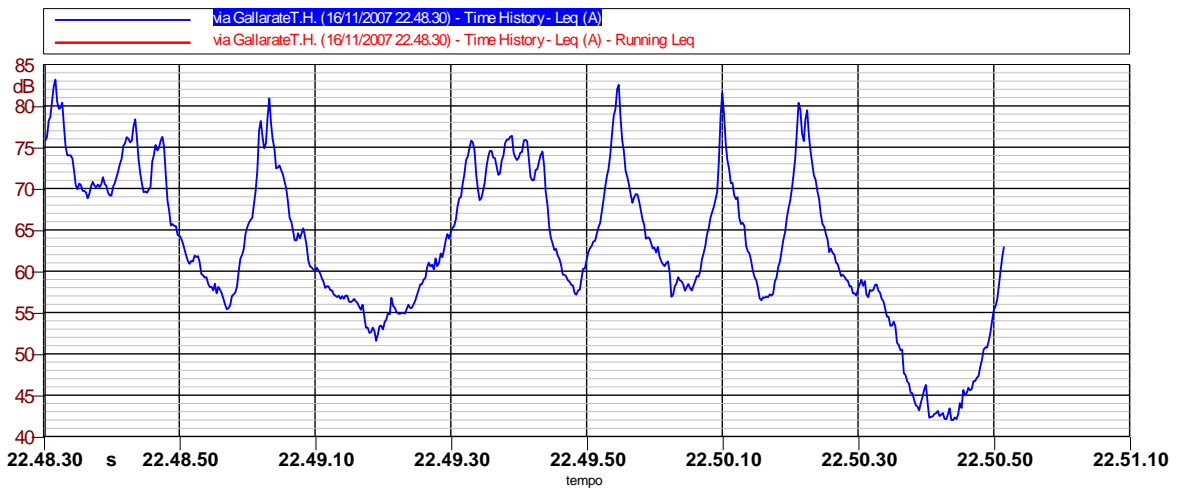
Nome: via GallarateT.H. (05/10/2007 15.22.49)		Allegato 1
Annotazioni: giorno	Data: 05/10/2007	Ora: 15.22.49
	Località: Castano Primo	
	Operatore: Ing. M. Porta	
Durata Misura: 900.8 sec	Strumentazione: Larson-Davis 824	



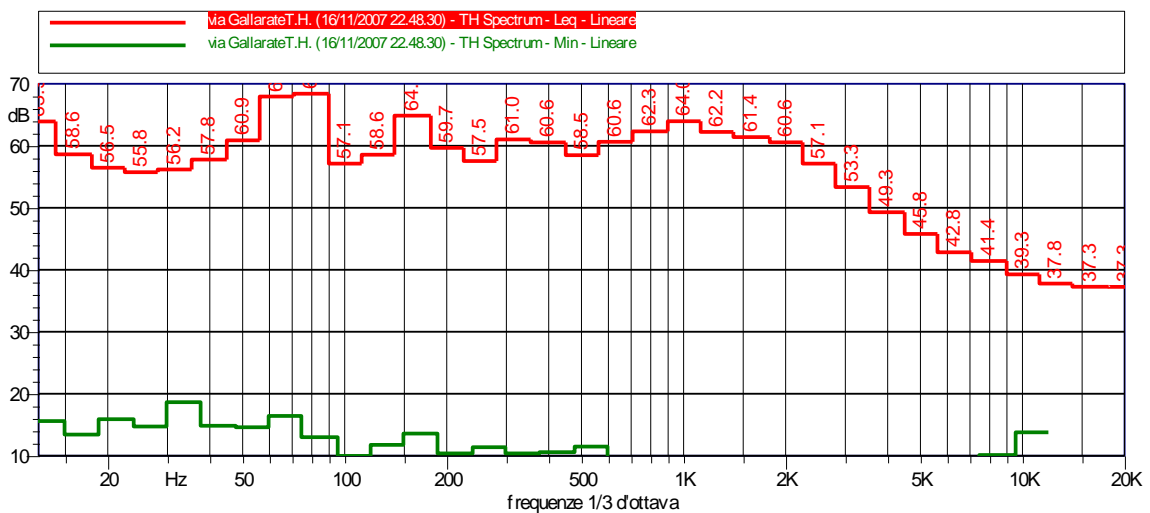
LAeq	LASmax	LAFmax	LN01	LN10	LN50	LN90	LN95
72.3A	83.8 dBA	86.6 dBA	80.7 dBA	76.1 dBA	69.3 dBA	57.3 dBA	53.5 dBA



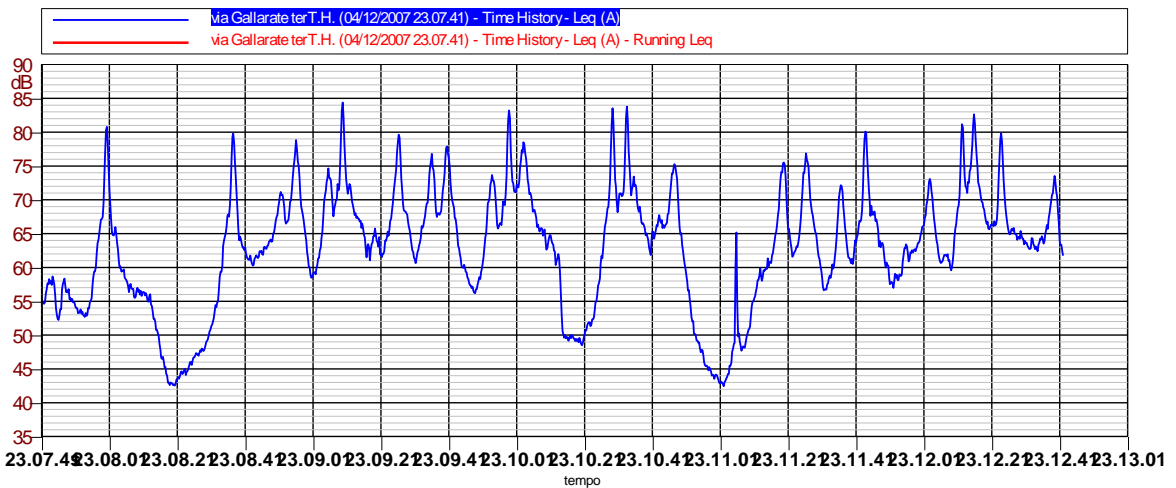
Nome: via GallarateT.H. (16/11/2007 22.48.30)		Allegato 1
Annotazioni: notte	Data: 16/11/2007	Ora: 22.48.30
	Località: CASTANO PRIMO	
Durata Misura: 141.6 sec	Operatore: Ing. M. Porta	
	Strumentazione: Larson-Davis 824	



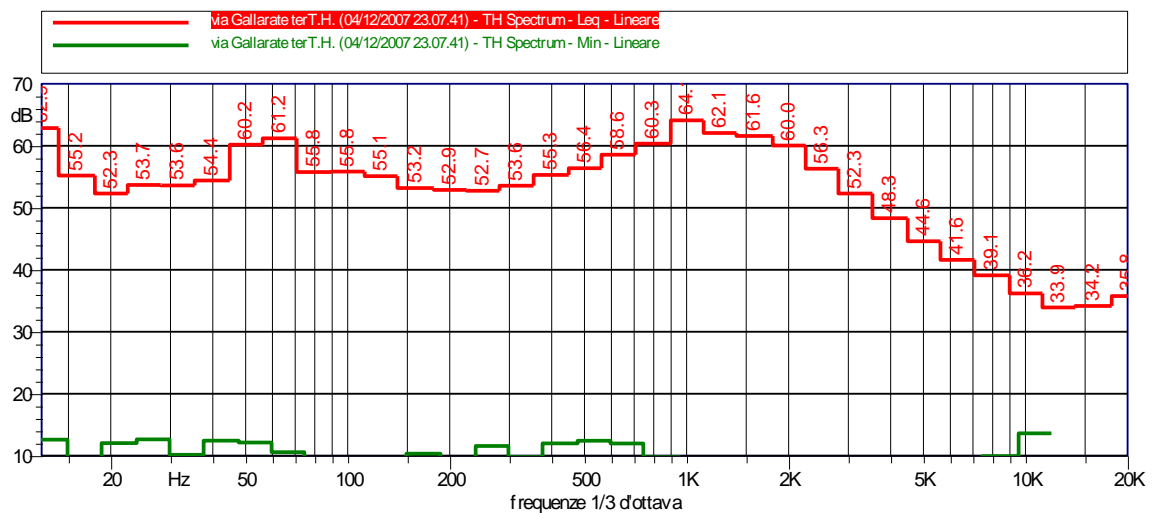
LAeq	LASmax	LAFmax	LN01	LN10	LN50	LN90	LN95
70.8A	80.8 dBA	83.3 dBA	81.0 dBA	75.4 dBA	62.5 dBA	52.2 dBA	45.2 dBA



Nome: via Gallarate terT.H. (04/12/2007 23.07.41)		Allegato 1
Annotazioni: notte	Data: 04/12/2007	Ora: 23.07.41
	Località: Castano Primo	
Operatore: Ing. M. Porta		
Durata Misura: 301.1 sec	Strumentazione: Larson-Davis 824	



LAeq	LASmax	LAFmax	LN01	LN10	LN50	LN90	LN95
70.0A	81.1 dBA	84.3 dBA	81.4 dBA	73.6 dBA	63.6 dBA	49.4 dBA	45.6 dBA



Punto nr. 4

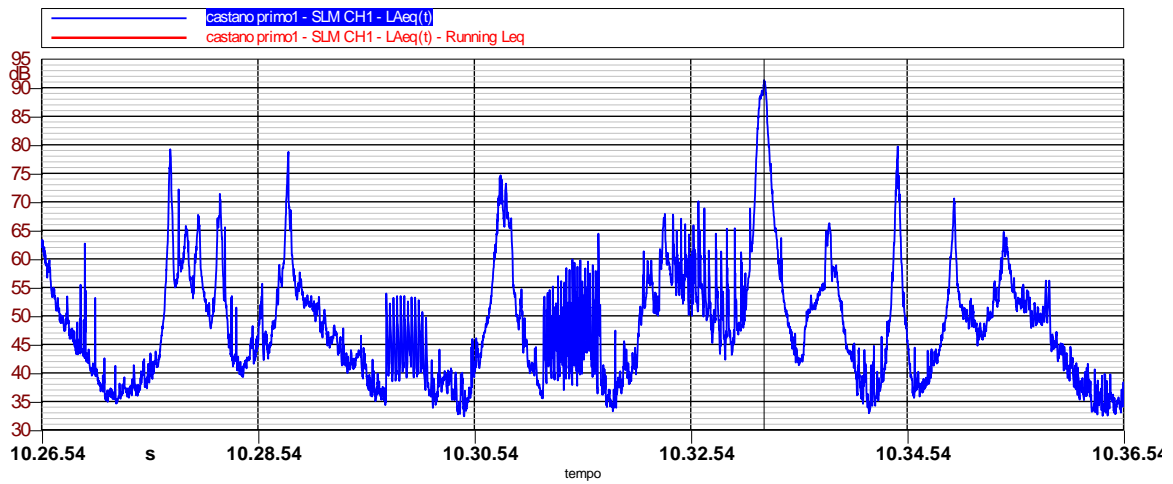
Via Ariosto angolo Via Madonna di Gree'

Posizione: ciglio strada

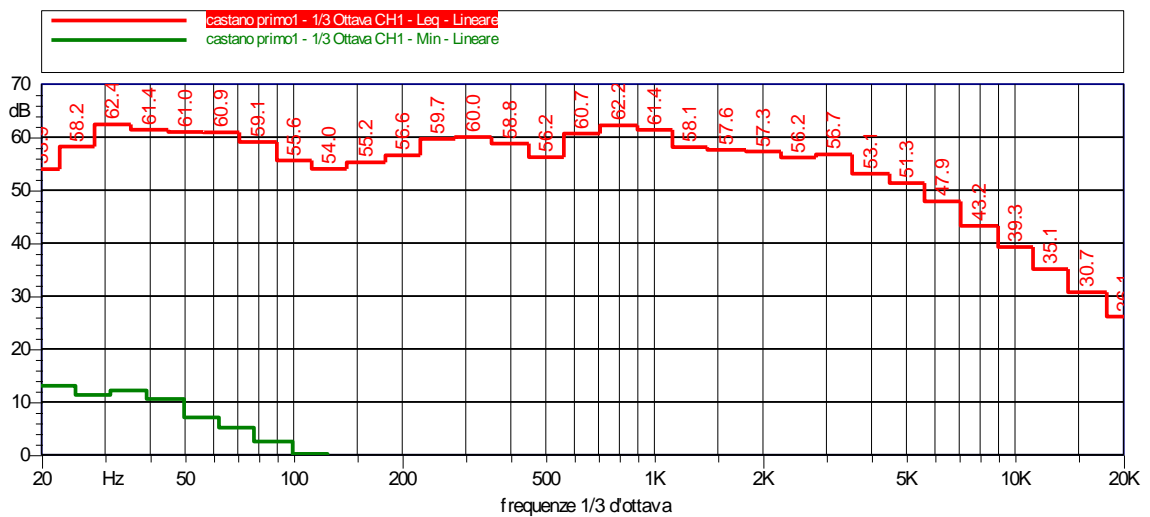
Rilievi diurni



Nome: castano primo1		Allegato 1	
Annotazioni: giorno	Data: 16/10/2007	Ora: 10.26.54	
	Località: castano primo		
	Operatore: Ing. Porta Marco		
Durata Misura: 600.0 sec	Strumentazione: SoundBook S/N: 6214		



LAeq	LASmax	LAFmax	LN01	LN10	LN50	LN90	LN95
69.0A	90.2 dBA	91.1 dBA	81.4 dBA	61.5 dBA	47.4 dBA	36.8 dBA	35.7 dBA



Punto nr. 5

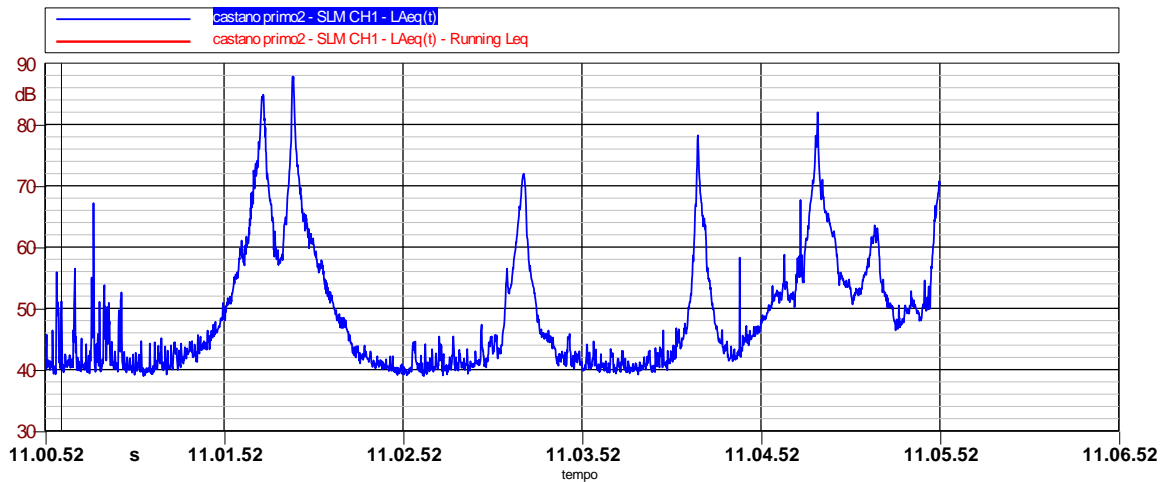
Via Oleggio angolo Via Beato Angelico

Posizione: civico 38

Rilievi diurni

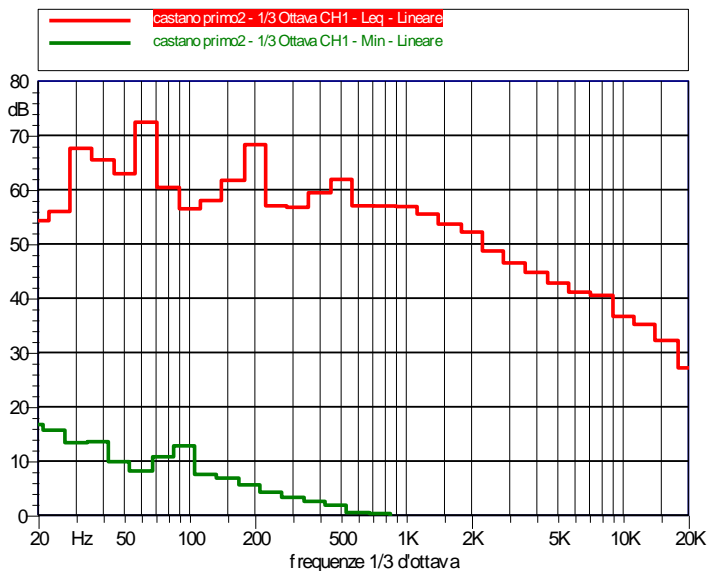


Nome: castano primo2		
Annotazioni: giorno	Data: 16/10/2007	Ora: 11.00.52
	Località: castano primo	
	Operatore: Ing.Porta Marco	
Durata Misura: 300.0 sec	Strumentazione: SoundBook S/N: 6214	



LAeq	LAmin	LAmax	LN01	LN10	LN50	LN90	LN95
66.1 dBA	39.0 dBA	87.8 dBA	79.8 dBA	64.0 dBA	45.1 dBA	40.3 dBA	40.0 dBA

Leq (originale): 66.1 dBA



Hz	dB
20 Hz	54.3
25 Hz	56.0
31.5 Hz	67.6
40 Hz	65.5
50 Hz	62.9
63 Hz	72.4
80 Hz	60.4
100 Hz	56.5
125 Hz	58.0
160 Hz	61.7
200 Hz	68.3
250 Hz	57.0
315 Hz	56.7
400 Hz	59.4
500 Hz	61.9
630 Hz	57.0
800 Hz	57.0
1000 Hz	56.9
1250 Hz	55.5
1600 Hz	53.6
2000 Hz	52.2
2500 Hz	48.7
3150 Hz	46.5
4000 Hz	44.7
5000 Hz	42.8
6300 Hz	41.1
8000 Hz	40.5
10000 Hz	36.6
12500 Hz	35.2
16000 Hz	32.2
20000 Hz	27.2

Hz	dB
20 Hz	37.7
25 Hz	37.8
31.5 Hz	39.0
40 Hz	39.3
50 Hz	40.6
63 Hz	39.6
80 Hz	37.2
100 Hz	37.4
125 Hz	33.8
160 Hz	32.0
200 Hz	34.7
250 Hz	36.7
315 Hz	31.4
400 Hz	30.7
500 Hz	29.5
630 Hz	28.1
800 Hz	27.2
1000 Hz	26.4
1250 Hz	25.7
1600 Hz	24.4
2000 Hz	24.2
2500 Hz	21.0
3150 Hz	18.8
4000 Hz	16.8
5000 Hz	13.9
6300 Hz	10.3
8000 Hz	8.5
10000 Hz	7.1
12500 Hz	6.2
16000 Hz	5.1
20000 Hz	4.2

Punto nr. 6

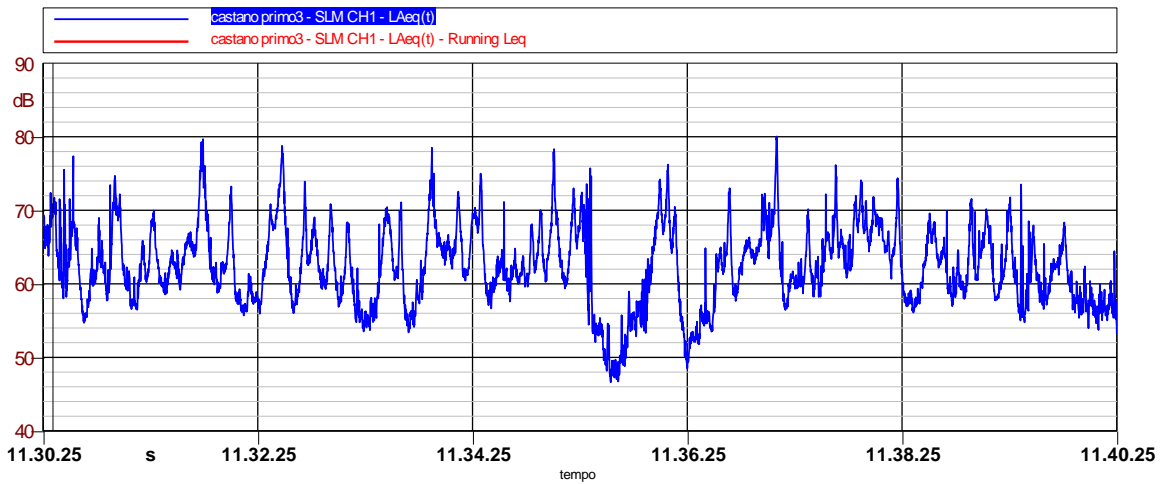
P.zza Mazzini

Posizione: lato della piazza

Rilievi diurni e notturni

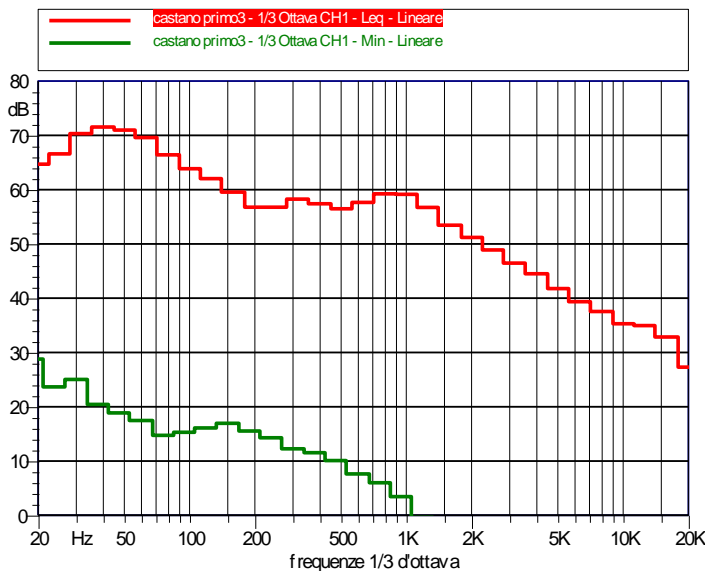


Nome: castano primo3		
Annotazioni: giorno	Data: 16/10/2007	Ora: 11.30.25
	Località: castano primo	
	Operatore: Ing.Porta Marco	
Durata Misura: 600.0 sec	Strumentazione: SoundBook S/N: 6214	



LAeq	LAmin	LAmax	LN01	LN10	LN50	LN90	LN95
65.8 dBA	46.6 dBA	80.0 dBA	75.2 dBA	69.3 dBA	62.2 dBA	55.9 dBA	54.1 dBA

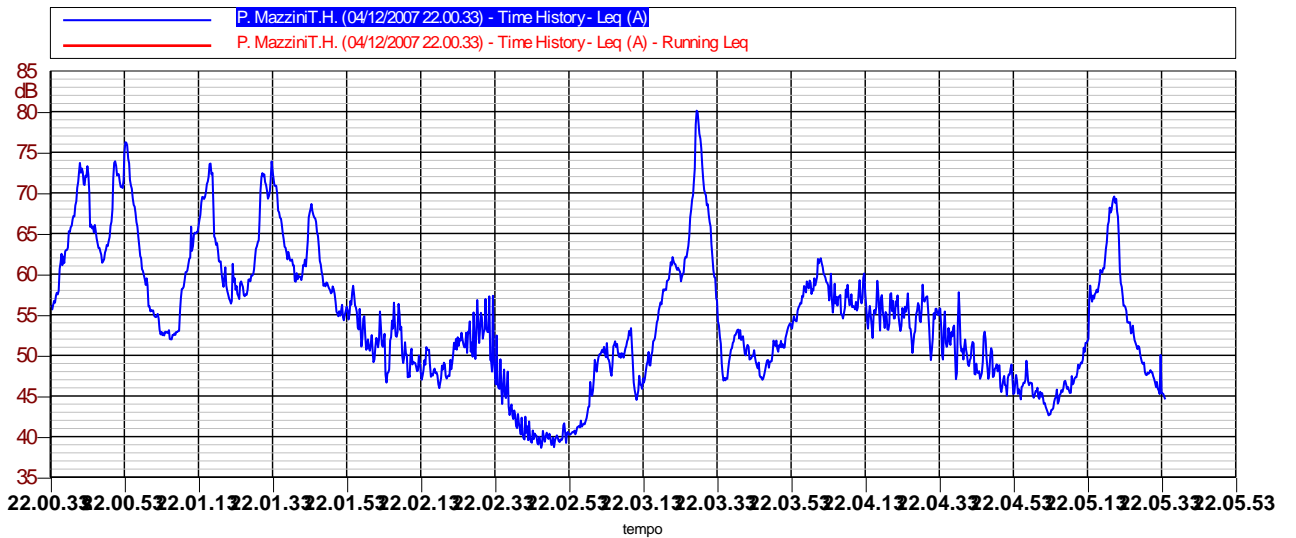
Leq (originale): 65.8 dBA



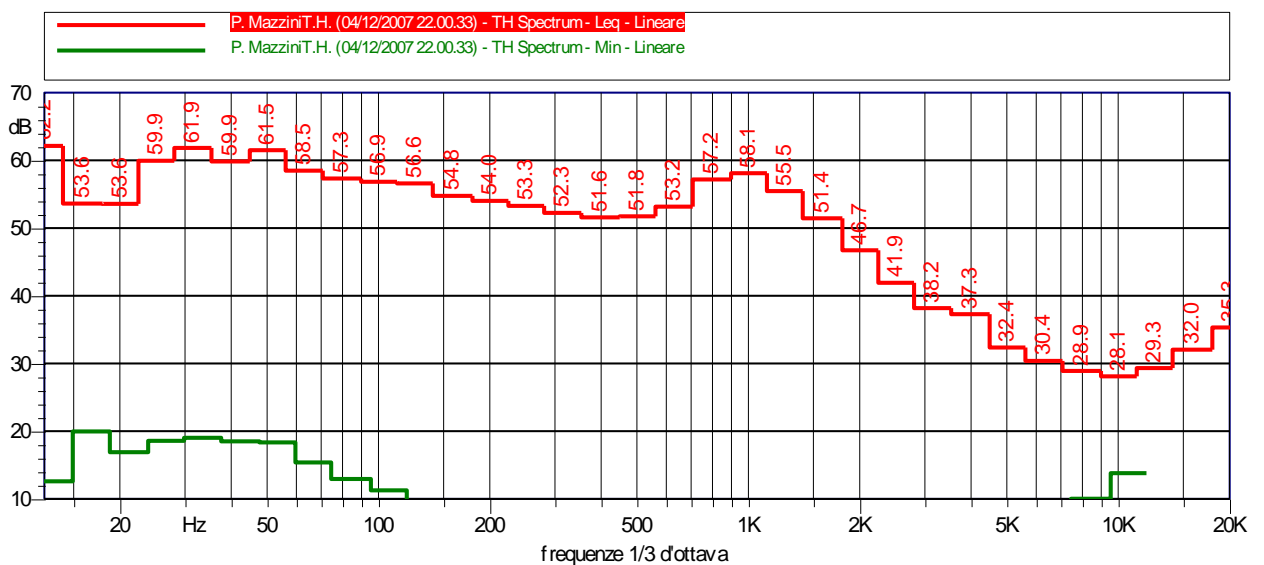
Hz	dB
20 Hz	64.7
25 Hz	66.6
31.5 Hz	70.3
40 Hz	71.5
50 Hz	71.0
63 Hz	69.6
80 Hz	66.4
100 Hz	63.9
125 Hz	62.0
160 Hz	59.5
200 Hz	56.8
250 Hz	56.8
315 Hz	58.3
400 Hz	57.4
500 Hz	56.5
630 Hz	57.6
800 Hz	59.2
1000 Hz	59.1
1250 Hz	56.7
1600 Hz	53.5
2000 Hz	51.2
2500 Hz	48.9
3150 Hz	46.5
4000 Hz	44.5
5000 Hz	41.8
6300 Hz	39.4
8000 Hz	37.5
10000 Hz	35.3
12500 Hz	34.9
16000 Hz	32.9
20000 Hz	27.3

Hz	dB
20 Hz	40.4
25 Hz	45.6
31.5 Hz	48.7
40 Hz	49.4
50 Hz	52.7
63 Hz	47.5
80 Hz	48.9
100 Hz	44.3
125 Hz	42.8
160 Hz	41.4
200 Hz	38.6
250 Hz	39.2
315 Hz	40.0
400 Hz	40.8
500 Hz	39.4
630 Hz	38.2
800 Hz	36.1
1000 Hz	35.4
1250 Hz	33.9
1600 Hz	31.5
2000 Hz	29.9
2500 Hz	27.3
3150 Hz	23.5
4000 Hz	20.9
5000 Hz	19.5
6300 Hz	17.0
8000 Hz	14.3
10000 Hz	10.2
12500 Hz	7.8
16000 Hz	6.0
20000 Hz	4.5

Nome: P. MazziniT.H. (04/12/2007 22.00.33)		Allegato 1
Annotazioni: notte	Data: 04/12/2007	Ora: 22.00.33
	Località: Castano Primo	
	Operatore: Ing. M. Porta	
Durata Misura: 301.1 sec	Strumentazione: Larson-Davis 824	



LAeq	LASmax	LAFmax	LN01	LN10	LN50	LN90	LN95
63.1A	77.6 dBA	80.9 dBA	74.2 dBA	66.8 dBA	53.4 dBA	45.1 dBA	41.2 dBA



Punto nr. 7

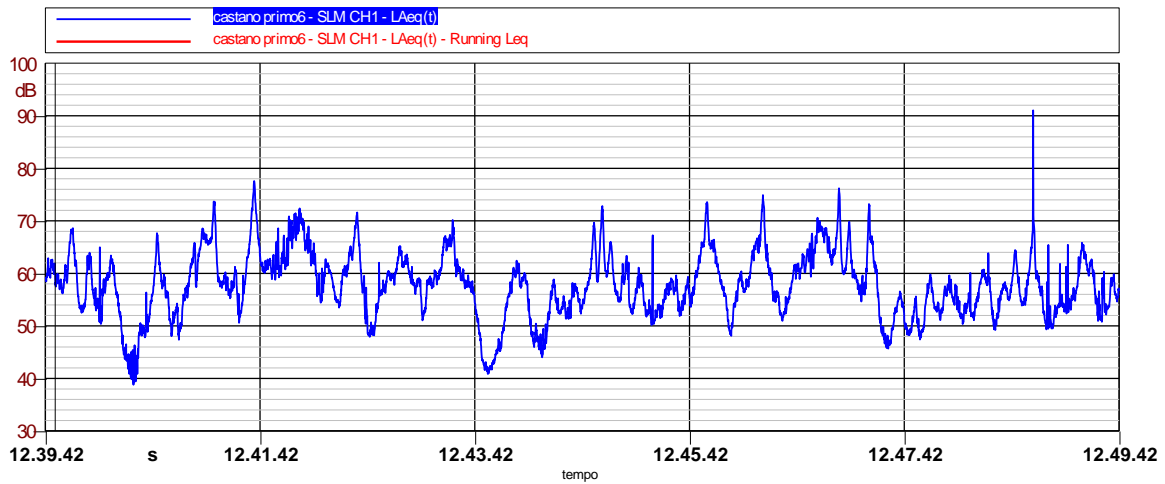
Via della Resistenza

Posizione: parcheggio centro commerciale

Rilievi diurni e notturni

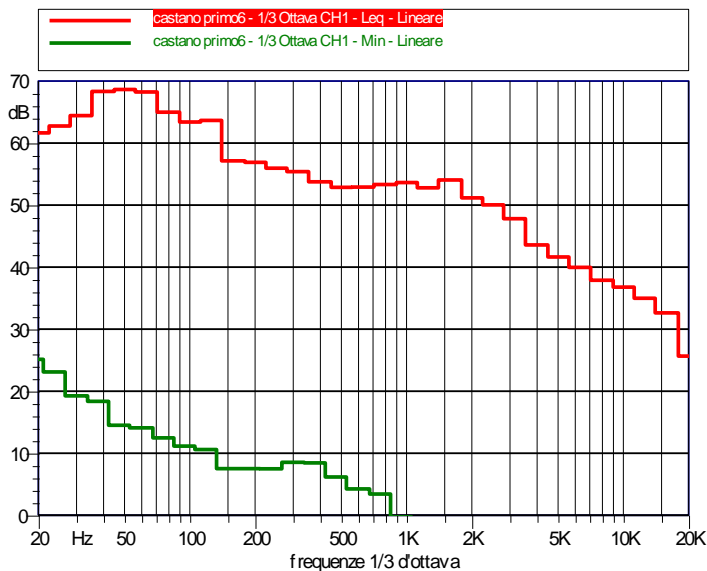


Nome: castano primo6		
Annotazioni: giorno	Data: 16/10/2007	Ora: 12.39.42
	Località: casatno primo	
	Operatore: Ing.Porta Marco	
Durata Misura: 600.0 sec	Strumentazione: SoundBook S/N: 6214	



LAeq	LAmin	LAmax	LN01	LN10	LN50	LN90	LN95
62.8 dBA	38.8 dBA	91.0 dBA	72.7 dBA	66.0 dBA	57.8 dBA	49.9 dBA	47.7 dBA

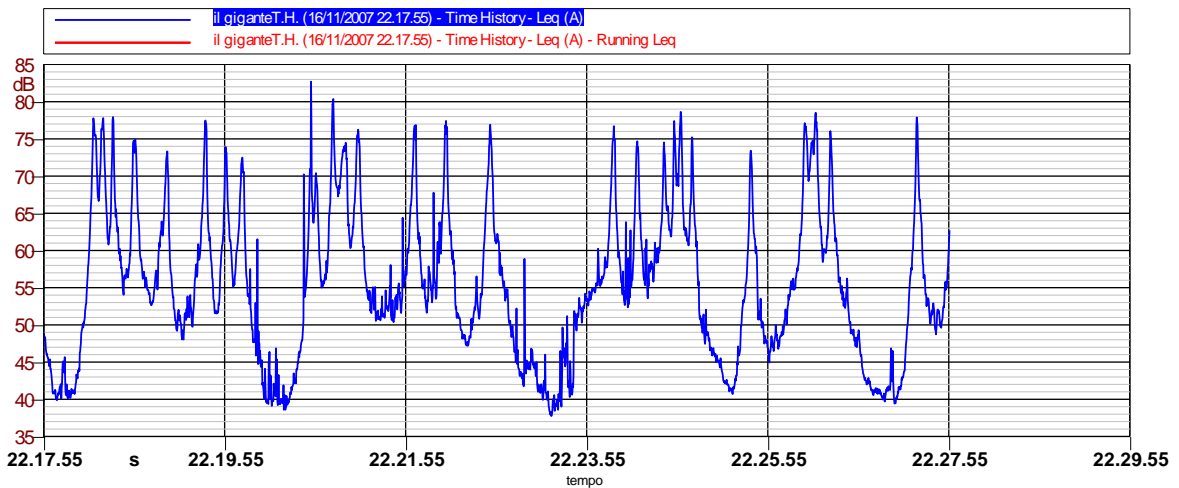
Leq (originale): 62.8 dBA



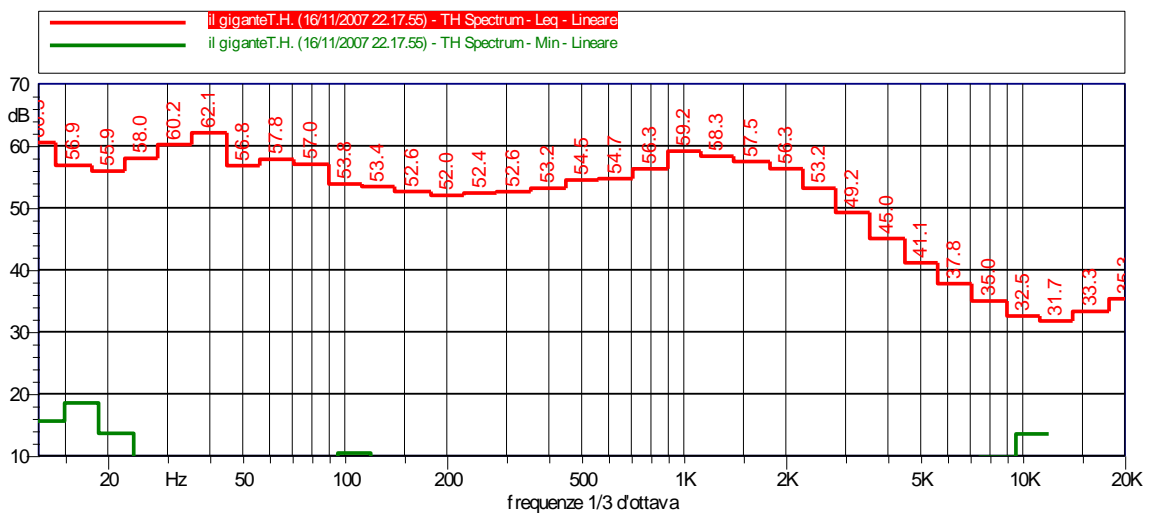
Hz	dB
20 Hz	61.6
25 Hz	62.8
31.5 Hz	64.4
40 Hz	68.3
50 Hz	68.6
63 Hz	68.3
80 Hz	65.0
100 Hz	63.4
125 Hz	63.7
160 Hz	57.1
200 Hz	56.9
250 Hz	56.0
315 Hz	55.4
400 Hz	53.8
500 Hz	52.9
630 Hz	52.9
800 Hz	53.3
1000 Hz	53.6
1250 Hz	52.8
1600 Hz	54.1
2000 Hz	51.2
2500 Hz	50.0
3150 Hz	47.8
4000 Hz	43.6
5000 Hz	41.6
6300 Hz	40.0
8000 Hz	37.9
10000 Hz	36.8
12500 Hz	35.0
16000 Hz	32.6
20000 Hz	25.7

Hz	dB
20 Hz	42.3
25 Hz	41.3
31.5 Hz	41.8
40 Hz	45.4
50 Hz	46.0
63 Hz	44.0
80 Hz	40.1
100 Hz	39.3
125 Hz	35.4
160 Hz	35.0
200 Hz	33.4
250 Hz	32.0
315 Hz	31.5
400 Hz	28.4
500 Hz	28.4
630 Hz	28.4
800 Hz	29.4
1000 Hz	29.3
1250 Hz	27.1
1600 Hz	25.2
2000 Hz	24.3
2500 Hz	20.6
3150 Hz	17.3
4000 Hz	13.7
5000 Hz	10.8
6300 Hz	9.3
8000 Hz	8.0
10000 Hz	7.2
12500 Hz	6.5
16000 Hz	5.3
20000 Hz	4.2

Nome: il giganteT.H. (16/11/2007 22.17.55)		Allegato 1
Annotazioni: notte	Data: 16/11/2007	Ora: 22.17.55
	Località: CASTANO PRIMO	
	Operatore: Ing. M. Porta	
Durata Misura: 600.6 sec	Strumentazione: Larson-Davis 824	



LAeq	LASmax	LAFmax	LN01	LN10	LN50	LN90	LN95
66.0A	78.2 dBA	83.4 dBA	77.1 dBA	70.7 dBA	54.4 dBA	41.4 dBA	40.5 dBA



Punto nr. 8

Casa Riposo S. Giuseppe Opera Don Guanella
Via Arco Nuovo 14

Rilievi diurni

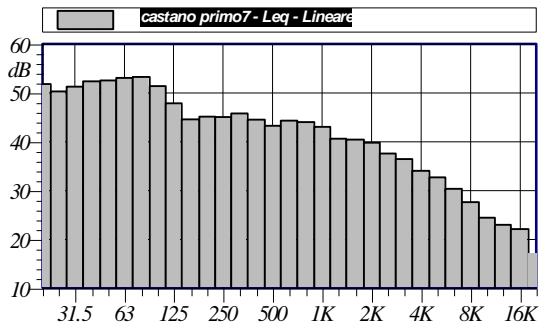


Nome misura: castano primo7
 Località: casatno primo
 Strumentazione: SoundBook/S/N: 6214
 Nome operatore: Ing.Porta Marco
 Data, ora misura: 16/10/2007 14.34.30

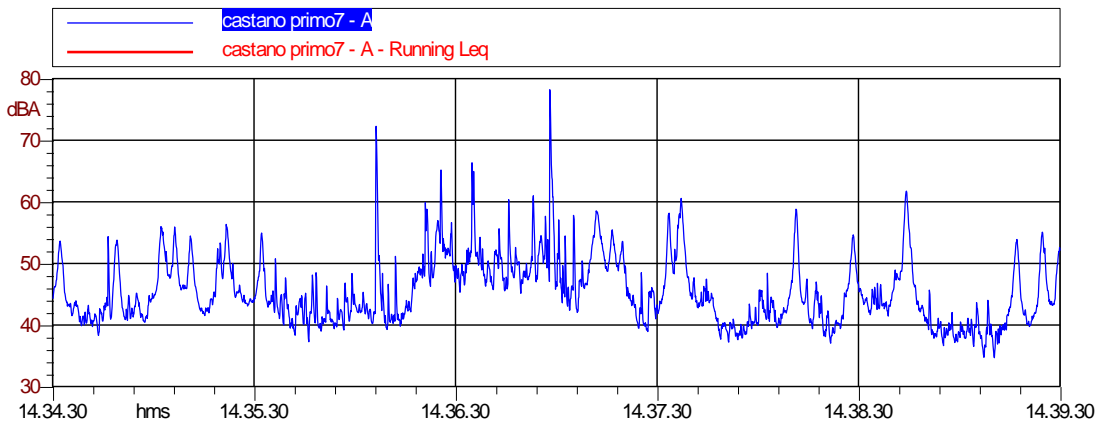
castano primo7					
Leq - Lineare					
dB		dB		dB	
20 Hz	51.8 dB	25 Hz	50.3 dB	31.5 Hz	51.3 dB
40 Hz	52.4 dB	50 Hz	52.5 dB	63 Hz	53.1 dB
80 Hz	53.3 dB	100 Hz	51.4 dB	125 Hz	47.9 dB
160 Hz	44.6 dB	200 Hz	45.1 dB	250 Hz	45.1 dB
315 Hz	45.8 dB	400 Hz	44.5 dB	500 Hz	43.3 dB
630 Hz	44.3 dB	800 Hz	44.0 dB	1000 Hz	43.0 dB
1250 Hz	40.6 dB	1600 Hz	40.4 dB	2000 Hz	39.8 dB
2500 Hz	37.6 dB	3150 Hz	36.5 dB	4000 Hz	34.1 dB
5000 Hz	32.7 dB	6300 Hz	30.4 dB	8000 Hz	27.6 dB
10000 Hz	24.5 dB	12500 Hz	23.0 dB	16000 Hz	22.1 dB
20000 Hz	17.2 dB				

L1: 60.8 dBA	L5: 55.1 dBA
L10: 52.9 dBA	L50: 44.3 dBA
L90: 39.6 dBA	L95: 38.7 dBA

Leq = 52.1 dBA



Annotazioni: giorno



castano primo7			
A			
Nome	Inizio	Durata	Leq
Totale	14.34.30	00:04:59.999	52.1 dBA
Non Mascherato	14.34.30	00:04:59.999	52.1 dBA
Mascherato		00:00:00	0.0 dBA

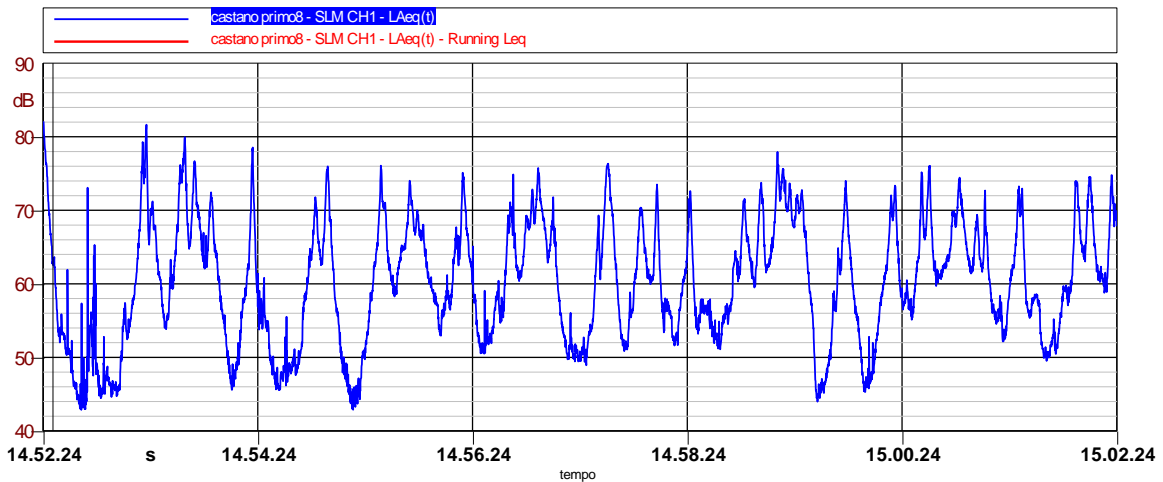
Punto nr. 9

Casa Riposo Fondazione Opera Pia F. Colleoni
Via Colleoni 18

Rilievi diurni

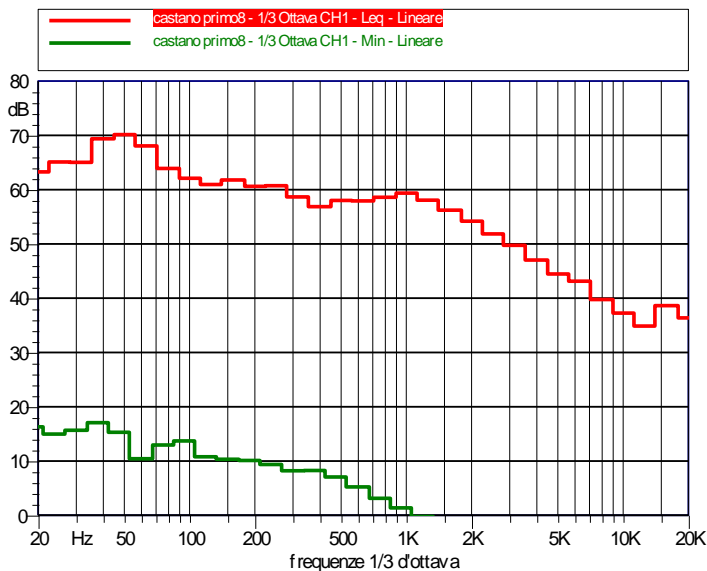


Nome: castano primo8		
Annotazioni: giorno	Data: 16/10/2007	Ora: 14.52.24
	Località: casatno primo	
	Operatore: Ing.Porta Marco	
Durata Misura: 600.0 sec	Strumentazione: SoundBook S/N: 6214	



LAeq	LAmin	LAmax	LN01	LN10	LN50	LN90	LN95
66.8 dBA	42.9 dBA	82.1 dBA	76.4 dBA	71.2 dBA	60.5 dBA	48.8 dBA	46.4 dBA

Leq (originale): 66.8 dBA



Hz	dB
20 Hz	63.3
25 Hz	65.1
31.5 Hz	65.0
40 Hz	69.4
50 Hz	70.1
63 Hz	68.1
80 Hz	63.9
100 Hz	62.1
125 Hz	60.9
160 Hz	61.8
200 Hz	60.6
250 Hz	60.7
315 Hz	58.7
400 Hz	56.9
500 Hz	58.0
630 Hz	57.9
800 Hz	58.6
1000 Hz	59.4
1250 Hz	58.1
1600 Hz	56.2
2000 Hz	54.2
2500 Hz	51.8
3150 Hz	49.7
4000 Hz	47.0
5000 Hz	44.5
6300 Hz	43.1
8000 Hz	39.8
10000 Hz	37.3
12500 Hz	34.9
16000 Hz	38.6
20000 Hz	36.4

Hz	dB
20 Hz	39.1
25 Hz	44.6
31.5 Hz	41.6
40 Hz	43.6
50 Hz	40.2
63 Hz	38.8
80 Hz	39.5
100 Hz	40.9
125 Hz	39.2
160 Hz	34.3
200 Hz	36.8
250 Hz	37.6
315 Hz	34.7
400 Hz	34.2
500 Hz	34.0
630 Hz	33.2
800 Hz	32.1
1000 Hz	32.1
1250 Hz	30.9
1600 Hz	29.1
2000 Hz	27.0
2500 Hz	25.2
3150 Hz	23.7
4000 Hz	19.9
5000 Hz	16.1
6300 Hz	12.8
8000 Hz	9.8
10000 Hz	7.6
12500 Hz	6.6
16000 Hz	5.4
20000 Hz	4.3

Punto nr. 10

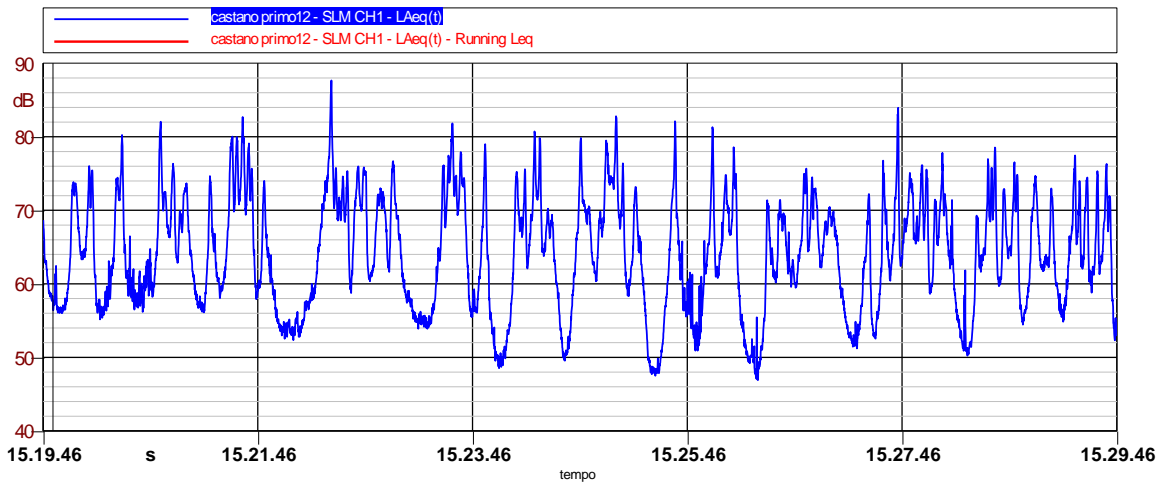
Strada Statale 341

Posizione: lato opposto Conceria Stefania

Rilievi diurni e notturni

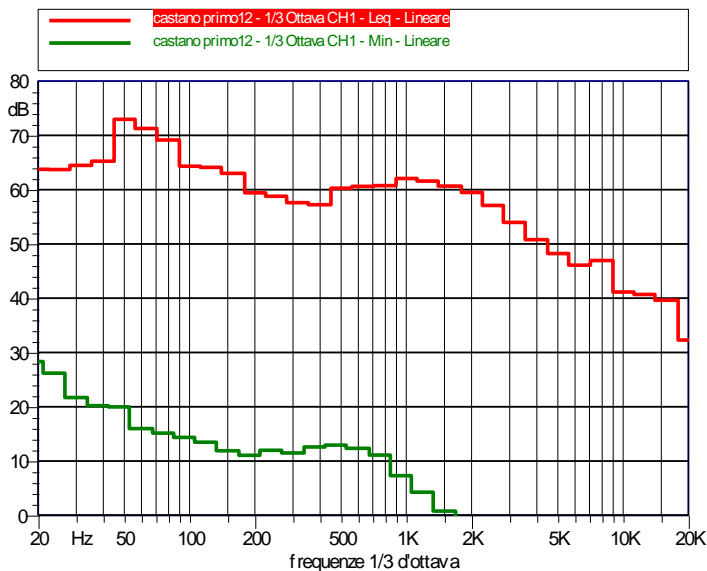


Nome: castano primo12		
Annotazioni: giorno	Data: 16/10/2007	Ora: 15.19.46
	Località: casatno primo	
	Operatore: Ing.Porta Marco	
Durata Misura: 600.0 sec	Strumentazione: SoundBook S/N: 6214	



LAeq	LAmin	LAmax	LN01	LN10	LN50	LN90	LN95
69.9 dBA	46.9 dBA	87.7 dBA	80.0 dBA	74.0 dBA	63.8 dBA	53.9 dBA	51.6 dBA

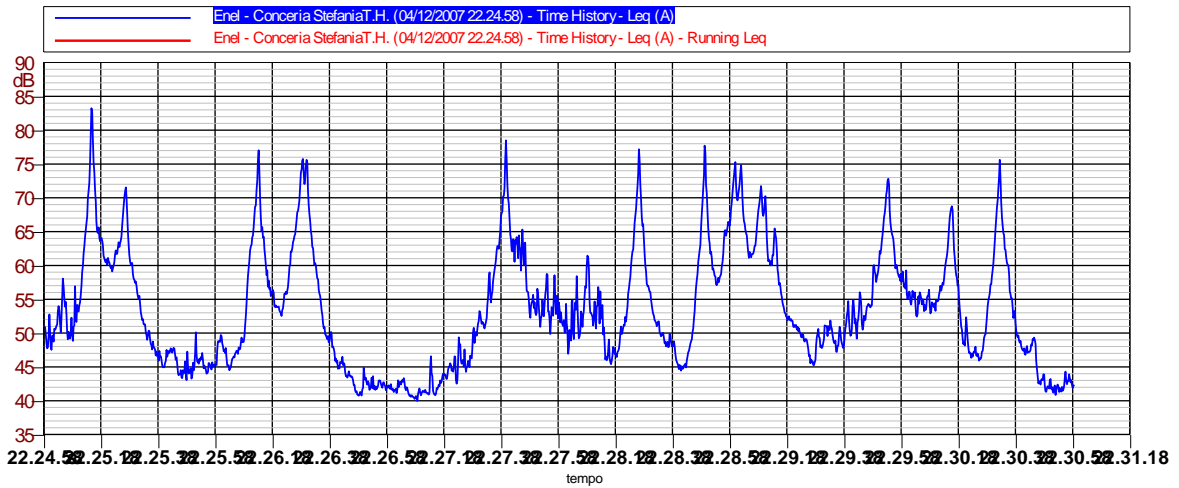
Leq (originale): 69.9 dBA



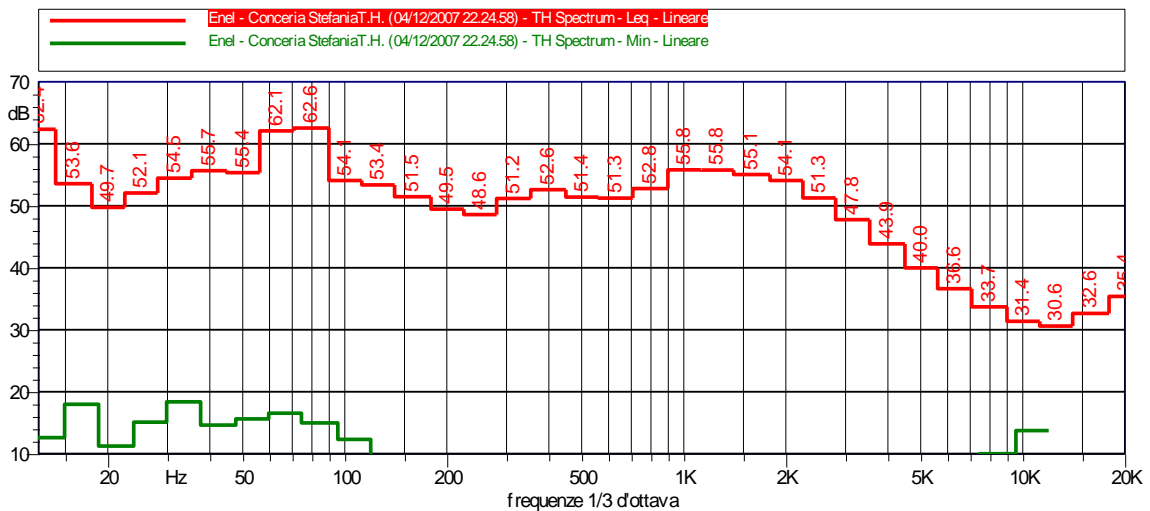
Hz	dB
20 Hz	63.8
25 Hz	63.7
31.5 Hz	64.5
40 Hz	65.2
50 Hz	73.0
63 Hz	71.3
80 Hz	69.2
100 Hz	64.3
125 Hz	64.1
160 Hz	63.0
200 Hz	59.4
250 Hz	58.8
315 Hz	57.6
400 Hz	57.2
500 Hz	60.3
630 Hz	60.6
800 Hz	60.7
1000 Hz	62.1
1250 Hz	61.6
1600 Hz	60.7
2000 Hz	59.5
2500 Hz	57.1
3150 Hz	54.0
4000 Hz	50.8
5000 Hz	48.2
6300 Hz	46.1
8000 Hz	46.9
10000 Hz	41.1
12500 Hz	40.7
16000 Hz	39.6
20000 Hz	32.3

Hz	dB
20 Hz	42.6
25 Hz	43.5
31.5 Hz	43.8
40 Hz	47.1
50 Hz	52.2
63 Hz	50.1
80 Hz	45.6
100 Hz	44.1
125 Hz	43.9
160 Hz	39.9
200 Hz	39.0
250 Hz	38.2
315 Hz	37.3
400 Hz	35.8
500 Hz	34.9
630 Hz	35.8
800 Hz	35.4
1000 Hz	36.5
1250 Hz	36.8
1600 Hz	36.2
2000 Hz	35.0
2500 Hz	31.2
3150 Hz	28.1
4000 Hz	24.6
5000 Hz	20.7
6300 Hz	17.0
8000 Hz	12.7
10000 Hz	9.0
12500 Hz	7.4
16000 Hz	6.0
20000 Hz	4.4

Nome: Enel - Conceria StefaniaT.H. (04/12/2007 22.24.58)		Allegato 1
Annotazioni: notte	Data: 04/12/2007	Ora: 22.24.58
	Località: Castano Primo	
	Operatore: Ing. M. Porta	
Durata Misura: 360.6 sec	Strumentazione: Larson-Davis 824	



LAeq	LASmax	LAFmax	LN01	LN10	LN50	LN90	LN95
63.5A	79.8 dBA	83.8 dBA	75.5 dBA	66.2 dBA	51.9 dBA	42.8 dBA	41.7 dBA



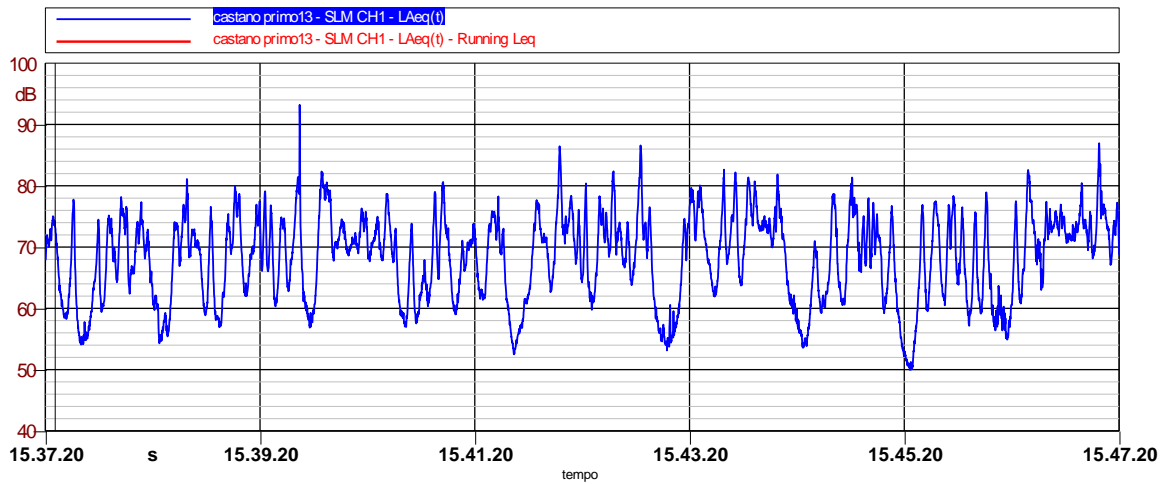
Punto nr. 11

**Strada Provinciale 34
Via Per Buscate angolo via Nitti**
Posizione: ciglio strada

Rilievi diurni e notturni

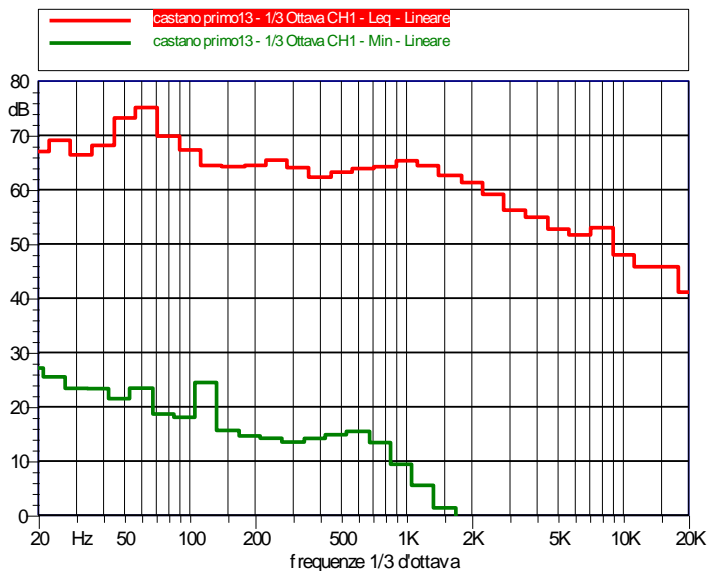


Nome: castano primo13		
Annotazioni: giorno	Data: 16/10/2007	Ora: 15.37.20
	Località: casatno primo	
	Operatore: Ing.Porta Marco	
Durata Misura: 600.0 sec	Strumentazione: SoundBook S/N: 6214	



LAeq	LAmin	LAmax	LN01	LN10	LN50	LN90	LN95
72.9 dBA	50.0 dBA	93.2 dBA	81.7 dBA	76.6 dBA	69.7 dBA	58.2 dBA	56.0 dBA

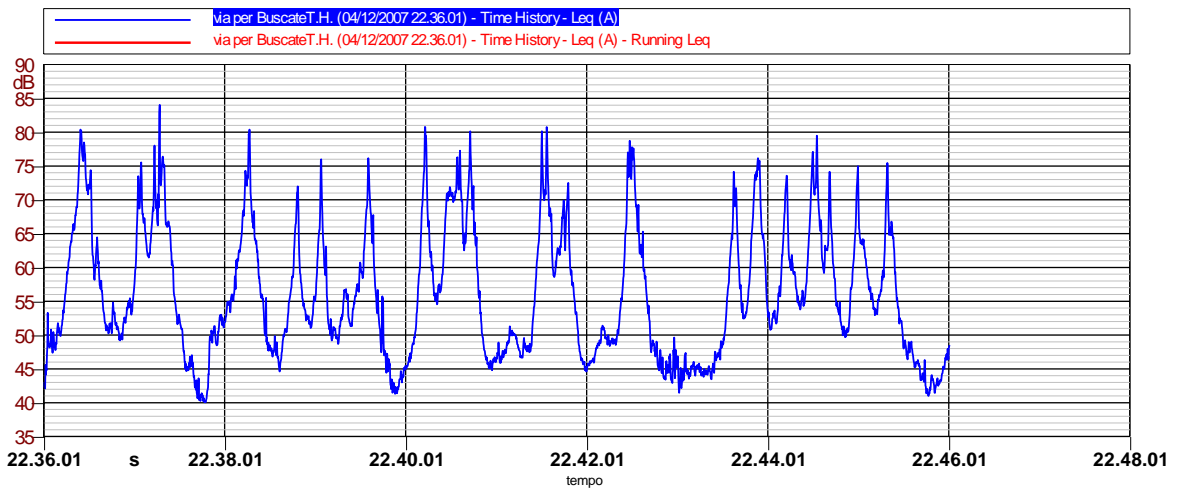
Leq (originale): 72.9 dBA



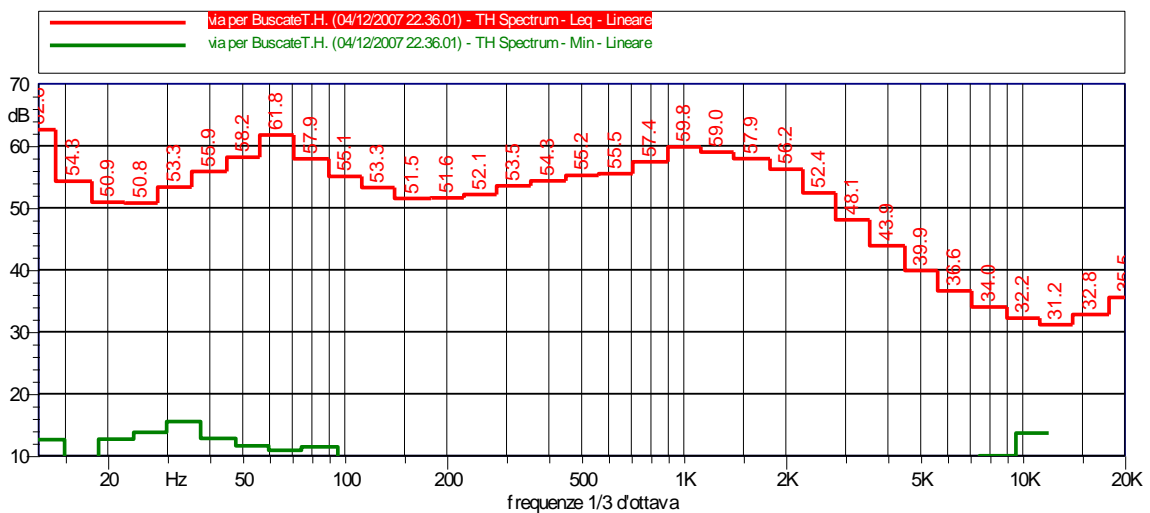
Hz	dB
20 Hz	67.0
25 Hz	69.1
31.5 Hz	66.4
40 Hz	68.2
50 Hz	73.2
63 Hz	75.1
80 Hz	69.9
100 Hz	67.3
125 Hz	64.4
160 Hz	64.3
200 Hz	64.5
250 Hz	65.4
315 Hz	64.1
400 Hz	62.3
500 Hz	63.2
630 Hz	63.9
800 Hz	64.2
1000 Hz	65.3
1250 Hz	64.4
1600 Hz	62.6
2000 Hz	61.3
2500 Hz	59.2
3150 Hz	56.2
4000 Hz	54.9
5000 Hz	52.7
6300 Hz	51.7
8000 Hz	53.0
10000 Hz	48.0
12500 Hz	45.8
16000 Hz	45.8
20000 Hz	41.1

Hz	dB
20 Hz	40.5
25 Hz	44.7
31.5 Hz	48.9
40 Hz	47.8
50 Hz	51.0
63 Hz	49.4
80 Hz	47.3
100 Hz	47.2
125 Hz	45.4
160 Hz	47.3
200 Hz	42.5
250 Hz	41.9
315 Hz	48.4
400 Hz	39.5
500 Hz	38.5
630 Hz	38.1
800 Hz	37.4
1000 Hz	38.0
1250 Hz	38.7
1600 Hz	39.3
2000 Hz	37.3
2500 Hz	33.3
3150 Hz	29.4
4000 Hz	25.2
5000 Hz	21.8
6300 Hz	16.2
8000 Hz	11.1
10000 Hz	7.6
12500 Hz	6.3
16000 Hz	5.6
20000 Hz	4.2

Nome: via per BuscateT.H. (04/12/2007 22.36.01)		Allegato 1
Annotazioni: notte	Data: 04/12/2007	Ora: 22.36.01
	Località: Castano Primo	
Operatore: Ing. M. Porta		
Durata Misura: 600.6 sec	Strumentazione: Larson-Davis 824	



LAeq	LASmax	LAFmax	LN01	LN10	LN50	LN90	LN95
66.5A	80.0 dBA	84.1 dBA	78.2 dBA	70.8 dBA	54.0 dBA	44.9 dBA	43.4 dBA



Punto nr. 12

Strada Provinciale 34

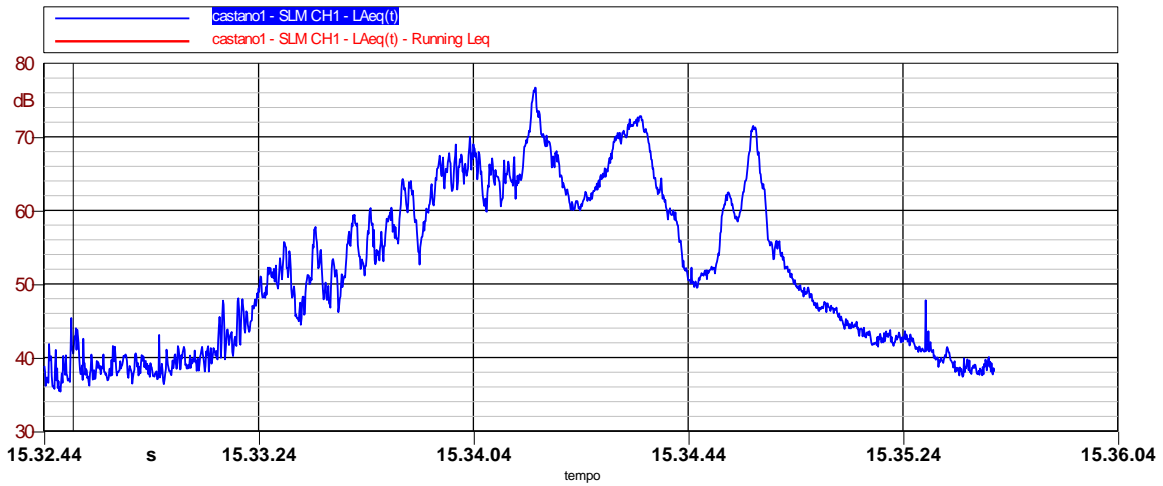
Via Oleggio

Posizione: ciglio strada

Rilievi diurni – passaggi singoli

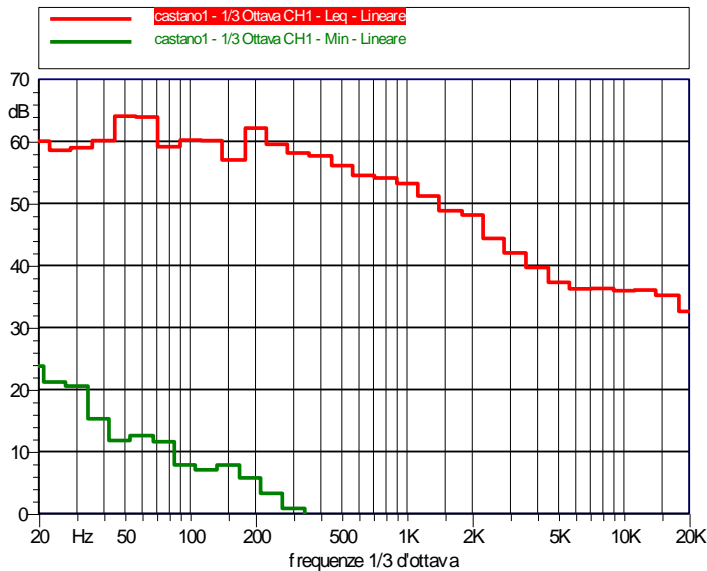


Nome: castano1		
Annotazioni: giorno	Data: 16/11/2007	Ora: 15.32.44
	Località: castano primo	
	Operatore: Ing. Porta Marco	
Durata Misura: 177.1 sec	Strumentazione: SoundBook S/N: 6214	



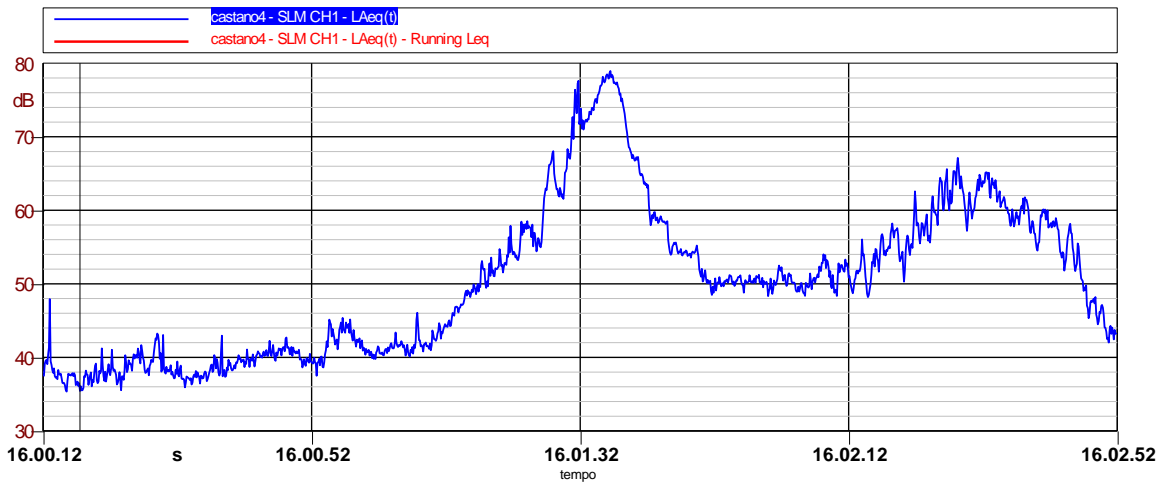
LAeq	LAmin	LAmax	LN01	LN10	LN50	LN90	LN95
62.6 dBA	35.4 dBA	76.7 dBA	72.7 dBA	67.1 dBA	50.9 dBA	38.6 dBA	38.0 dBA

Leq (originale): 62.6 dBA



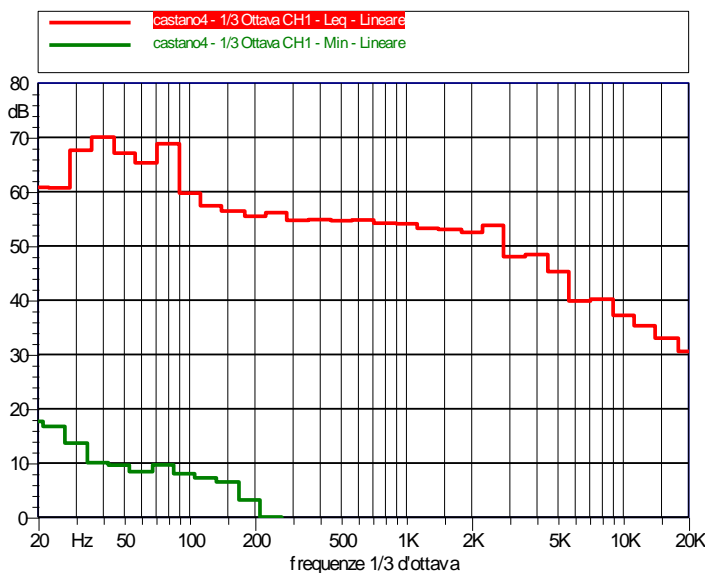
Hz	dB	Hz	dB
20 Hz	60.0	20 Hz	41.8
25 Hz	58.6	25 Hz	41.0
31.5 Hz	59.0	31.5 Hz	45.7
40 Hz	60.1	40 Hz	45.3
50 Hz	64.1	50 Hz	44.7
63 Hz	63.9	63 Hz	42.1
80 Hz	59.1	80 Hz	41.5
100 Hz	60.2	100 Hz	36.2
125 Hz	60.1	125 Hz	32.7
160 Hz	57.0	160 Hz	33.5
200 Hz	62.1	200 Hz	32.5
250 Hz	59.5	250 Hz	28.8
315 Hz	58.1	315 Hz	27.9
400 Hz	57.7	400 Hz	28.7
500 Hz	56.1	500 Hz	26.7
630 Hz	54.5	630 Hz	24.2
800 Hz	54.1	800 Hz	21.7
1000 Hz	53.2	1000 Hz	20.0
1250 Hz	51.2	1250 Hz	17.6
1600 Hz	48.8	1600 Hz	14.3
2000 Hz	48.1	2000 Hz	11.0
2500 Hz	44.4	2500 Hz	9.4
3150 Hz	42.0	3150 Hz	7.8
4000 Hz	39.7	4000 Hz	7.4
5000 Hz	37.3	5000 Hz	7.4
6300 Hz	36.2	6300 Hz	7.2
8000 Hz	36.3	8000 Hz	7.0
10000 Hz	35.9	10000 Hz	6.6
12500 Hz	36.0	12500 Hz	5.9
16000 Hz	35.2	16000 Hz	5.1
20000 Hz	32.6	20000 Hz	4.0

Nome: castano4		
Annotazioni: giorno	Data: 16/11/2007	Ora: 16.00.12
	Località: castano primo	
	Operatore: Ing.Porta Marco	
Durata Misura: 160.0 sec	Strumentazione: SoundBook S/N: 6214	



LAeq	LAmin	LAmax	LN01	LN10	LN50	LN90	LN95
63.7 dBA	35.4 dBA	78.9 dBA	77.5 dBA	63.9 dBA	50.2 dBA	38.3 dBA	37.4 dBA

Leq (originale): 63.7 dBA



Hz	dB	Hz	dB
20 Hz	60.8	20 Hz	43.6
25 Hz	60.7	25 Hz	43.5
31.5 Hz	67.6	31.5 Hz	41.4
40 Hz	70.0	40 Hz	41.3
50 Hz	67.1	50 Hz	41.6
63 Hz	65.3	63 Hz	40.6
80 Hz	68.8	80 Hz	37.5
100 Hz	59.7	100 Hz	33.9
125 Hz	57.4	125 Hz	33.5
160 Hz	56.4	160 Hz	32.3
200 Hz	55.5	200 Hz	33.5
250 Hz	56.1	250 Hz	31.9
315 Hz	54.7	315 Hz	31.1
400 Hz	54.9	400 Hz	30.4
500 Hz	54.7	500 Hz	27.1
630 Hz	54.8	630 Hz	23.9
800 Hz	54.2	800 Hz	20.6
1000 Hz	54.1	1000 Hz	20.4
1250 Hz	53.3	1250 Hz	17.5
1600 Hz	53.1	1600 Hz	14.0
2000 Hz	52.5	2000 Hz	10.5
2500 Hz	53.8	2500 Hz	9.3
3150 Hz	48.0	3150 Hz	7.8
4000 Hz	48.4	4000 Hz	7.5
5000 Hz	45.3	5000 Hz	7.3
6300 Hz	39.8	6300 Hz	7.2
8000 Hz	40.2	8000 Hz	7.0
10000 Hz	37.2	10000 Hz	6.5
12500 Hz	35.3	12500 Hz	5.9
16000 Hz	33.0	16000 Hz	5.1
20000 Hz	30.6	20000 Hz	4.0

Punto nr. 12

Strada Provinciale 34

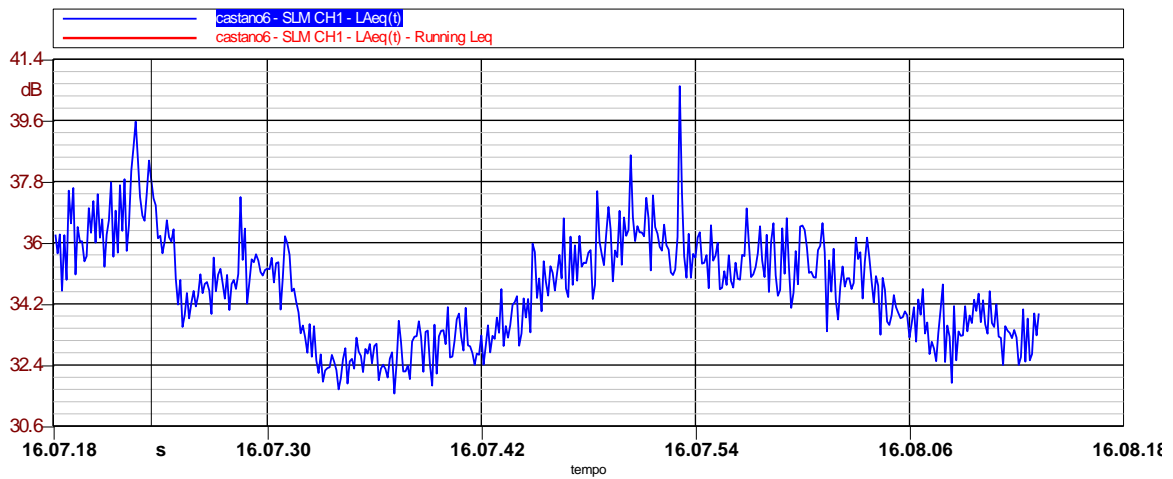
Via Oleggio

Posizione: ciglio strada

Rilievi diurni senza passaggi aerei

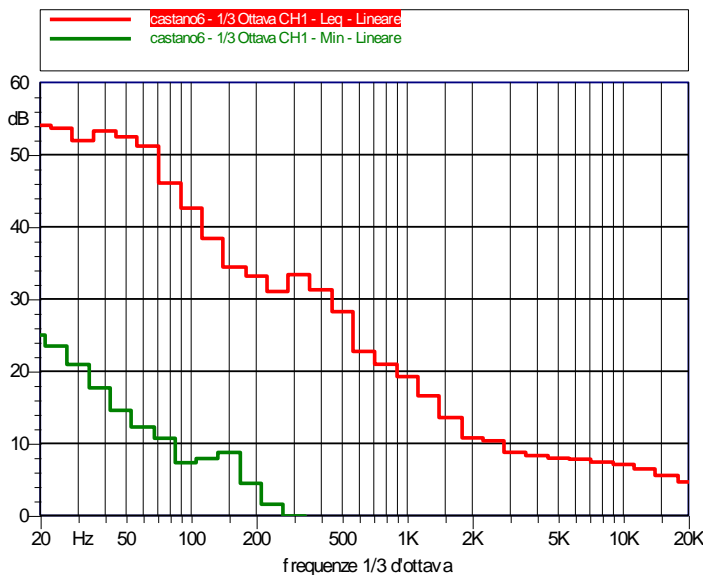


Nome: castano6		
Annotazioni: giorno	Data: 16/11/2007	Ora: 16.07.18
	Località: castano primo	
	Operatore: Ing. Porta Marco	
Durata Misura: 55.4 sec	Strumentazione: SoundBook S/N: 6214	



LAeq	L Amin	L Amax	LN01	LN10	LN50	LN90	LN95
34.9 dBA	31.6 dBA	40.6 dBA	38.0 dBA	36.5 dBA	34.8 dBA	32.8 dBA	32.4 dBA

Leq (originale): 34.9 dBA



Hz	dB
20 Hz	54.1
25 Hz	53.7
31.5 Hz	51.9
40 Hz	53.3
50 Hz	52.5
63 Hz	51.2
80 Hz	46.1
100 Hz	42.6
125 Hz	38.4
160 Hz	34.4
200 Hz	33.2
250 Hz	31.0
315 Hz	33.4
400 Hz	31.3
500 Hz	28.2
630 Hz	22.7
800 Hz	21.0
1000 Hz	19.3
1250 Hz	16.6
1600 Hz	13.6
2000 Hz	10.8
2500 Hz	10.4
3150 Hz	8.8
4000 Hz	8.3
5000 Hz	8.0
6300 Hz	7.8
8000 Hz	7.4
10000 Hz	7.1
12500 Hz	6.5
16000 Hz	5.6
20000 Hz	4.7

Hz	dB
20 Hz	43.3
25 Hz	44.5
31.5 Hz	41.9
40 Hz	42.1
50 Hz	42.9
63 Hz	41.4
80 Hz	38.8
100 Hz	35.6
125 Hz	32.5
160 Hz	30.2
200 Hz	28.6
250 Hz	25.2
315 Hz	25.8
400 Hz	26.7
500 Hz	22.4
630 Hz	19.5
800 Hz	17.8
1000 Hz	16.0
1250 Hz	13.7
1600 Hz	11.1
2000 Hz	8.7
2500 Hz	8.6
3150 Hz	7.6
4000 Hz	7.2
5000 Hz	7.1
6300 Hz	7.1
8000 Hz	6.7
10000 Hz	6.5
12500 Hz	5.7
16000 Hz	5.1
20000 Hz	4.1

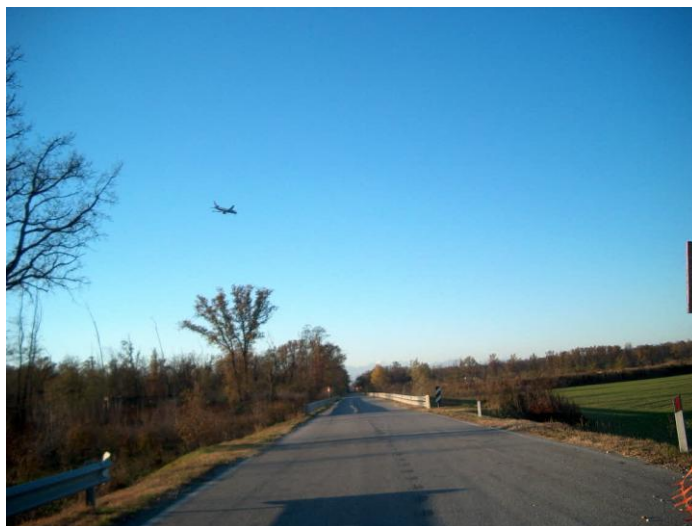
Punto nr. 12

Strada Provinciale 34

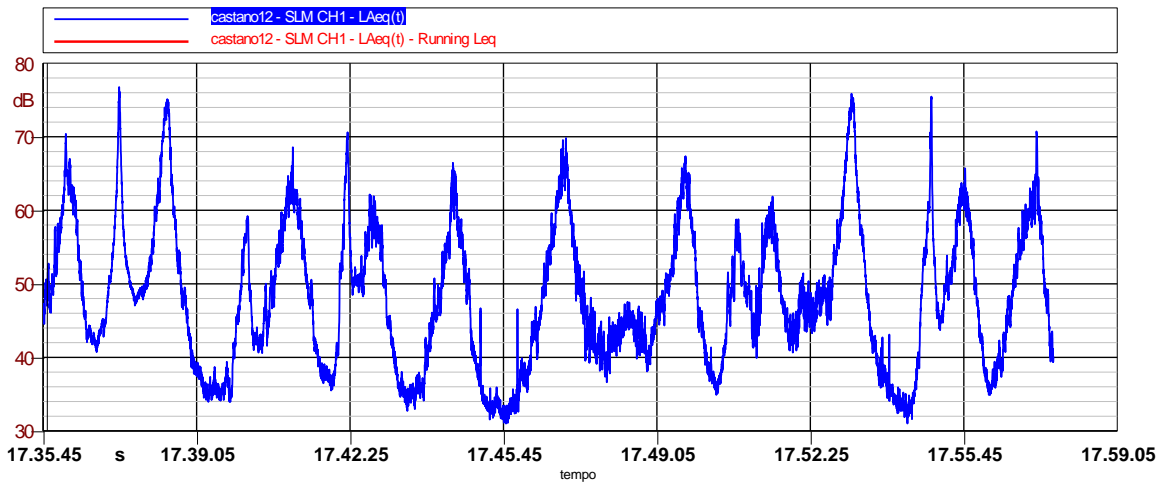
Via Oleggio

Posizione: ciglio strada

Rilievi diurni passaggi aerei – rilievo lungo

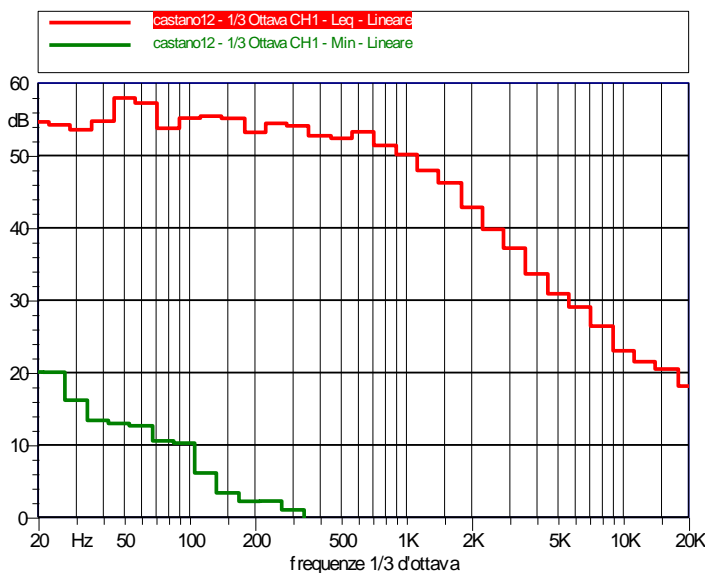


Nome: castano12		
Annotazioni: giorno	Data: 16/11/2007	Ora: 17.35.45
	Località: castano primo	
	Operatore: Ing.Porta Marco	
Durata Misura: 1316.8 sec	Strumentazione: SoundBook S/N: 6214	



LAeq	LAmin	LAmax	LN01	LN10	LN50	LN90	LN95
59.0 dBA	31.0 dBA	76.8 dBA	73.0 dBA	61.3 dBA	47.5 dBA	35.7 dBA	34.3 dBA

Leq (originale): 59.0 dBA



Hz	dB	Hz	dB
20 Hz	54.6	20 Hz	36.8
25 Hz	54.2	25 Hz	34.2
31.5 Hz	53.6	31.5 Hz	34.9
40 Hz	54.7	40 Hz	37.0
50 Hz	57.9	50 Hz	38.0
63 Hz	57.3	63 Hz	38.0
80 Hz	53.8	80 Hz	34.1
100 Hz	55.2	100 Hz	31.3
125 Hz	55.4	125 Hz	30.9
160 Hz	55.1	160 Hz	30.5
200 Hz	53.2	200 Hz	28.5
250 Hz	54.4	250 Hz	28.2
315 Hz	54.1	315 Hz	24.0
400 Hz	52.7	400 Hz	21.3
500 Hz	52.4	500 Hz	20.1
630 Hz	53.3	630 Hz	20.2
800 Hz	51.4	800 Hz	18.9
1000 Hz	50.1	1000 Hz	17.5
1250 Hz	47.9	1250 Hz	16.6
1600 Hz	46.2	1600 Hz	14.5
2000 Hz	42.8	2000 Hz	10.6
2500 Hz	39.8	2500 Hz	9.5
3150 Hz	37.2	3150 Hz	6.7
4000 Hz	33.6	4000 Hz	6.5
5000 Hz	30.9	5000 Hz	6.8
6300 Hz	29.1	6300 Hz	7.0
8000 Hz	26.4	8000 Hz	6.7
10000 Hz	23.0	10000 Hz	6.3
12500 Hz	21.5	12500 Hz	5.6
16000 Hz	20.5	16000 Hz	4.8
20000 Hz	18.1	20000 Hz	3.8

Punto nr. 13

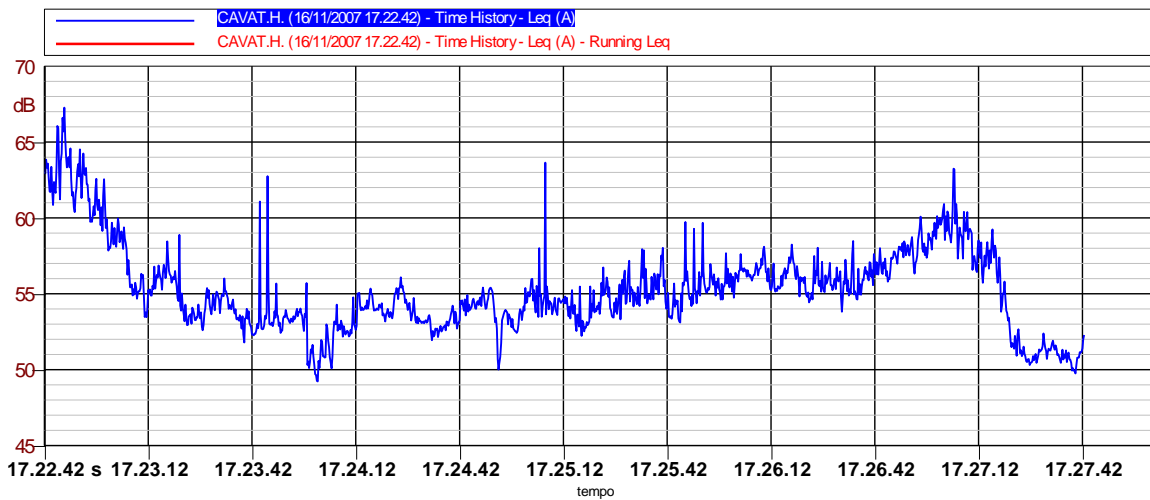
Via Per Buscate

Posizione: ciglio strada - cava

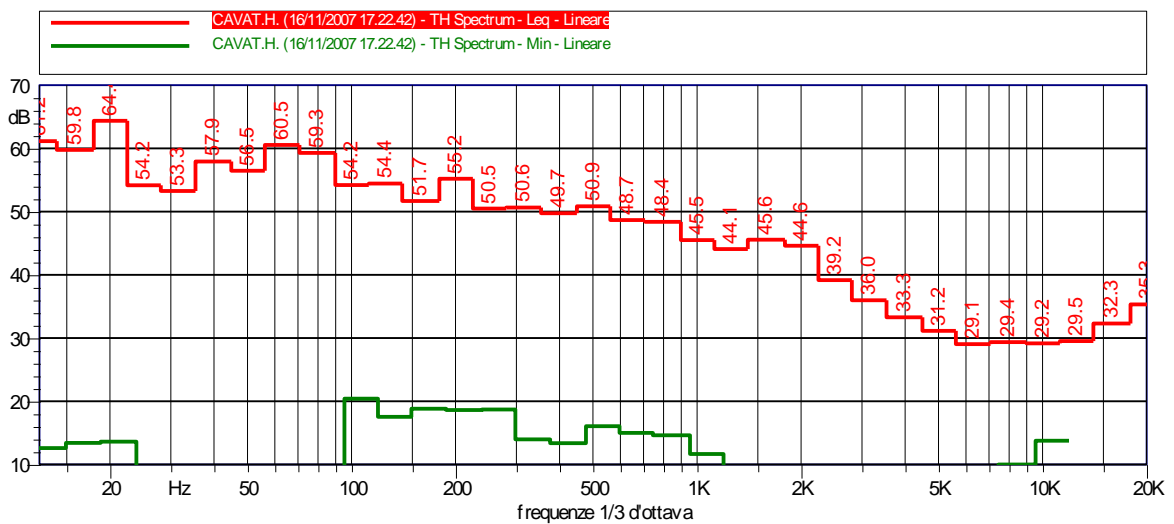
Rilievi diurni



Nome: CAVAT.H. (16/11/2007 17.22.42)		Allegato 1
Annotazioni: giorno	Data: 16/11/2007	Ora: 17.22.42
	Località: CASTANO PRIMO	
Operatore: Ing. M. Porta		
Durata Misura: 300.6 sec	Strumentazione: Larson-Davis 824	



<i>L_{Aeq}</i>	<i>L_{ASmax}</i>	<i>L_{AFmax}</i>	<i>LN01</i>	<i>LN10</i>	<i>LN50</i>	<i>LN90</i>	<i>LN95</i>
56.5A	65.6 dBA	67.6 dBA	64.0 dBA	58.9 dBA	54.9 dBA	52.1 dBA	50.9 dBA



Punto nr. 14

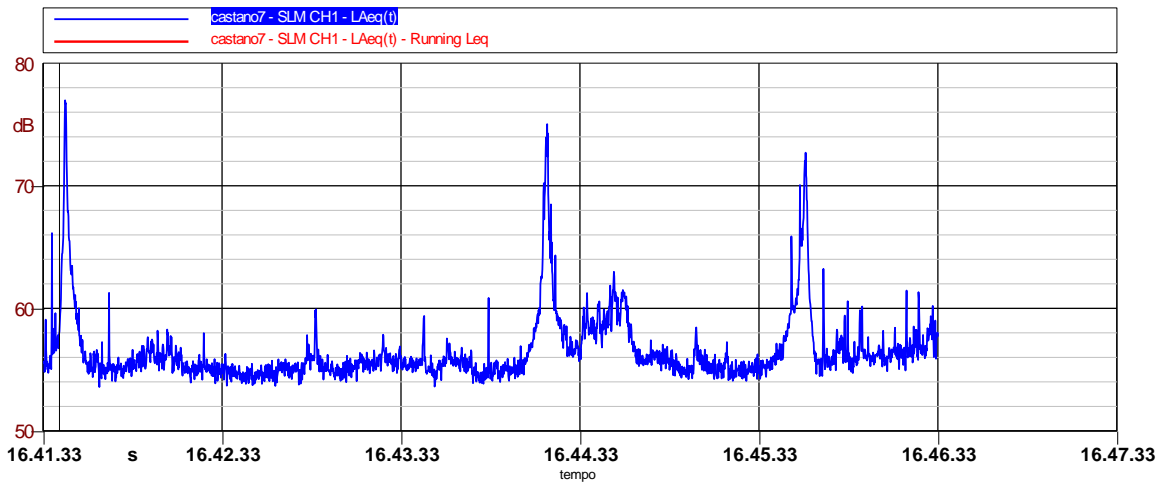
Via Baracca

Posizione: ciglio strada

Rilievi diurni

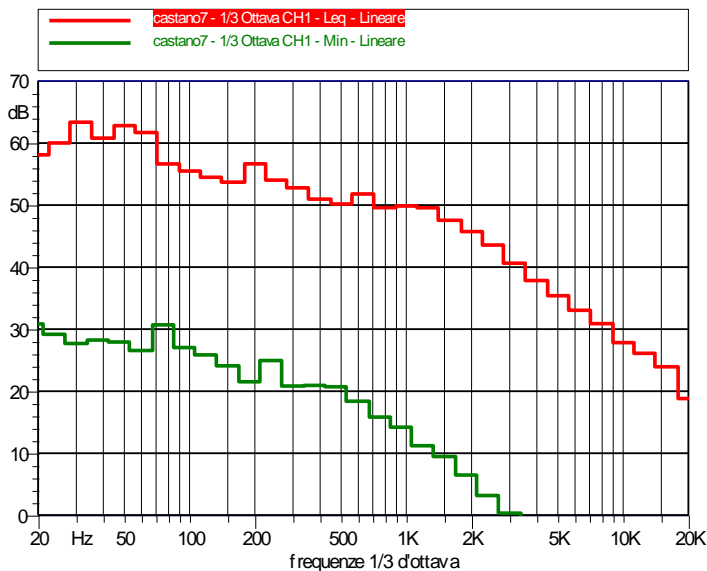


Nome: castano7		
Annotazioni: giorno	Data: 16/11/2007	Ora: 16.41.33
	Località: castano primo	
	Operatore: Ing. Porta Marco	
Durata Misura: 300.0 sec	Strumentazione: SoundBook S/N: 6214	



LAeq	LAmin	LAmax	LN01	LN10	LN50	LN90	LN95
58.8 dBA	53.6 dBA	77.0 dBA	69.7 dBA	59.2 dBA	55.7 dBA	54.7 dBA	54.5 dBA

Leq (originale): 58.8 dBA



Hz	dB	Hz	dB
20 Hz	58.1	20 Hz	45.3
25 Hz	60.0	25 Hz	44.6
31.5 Hz	63.4	31.5 Hz	51.9
40 Hz	60.8	40 Hz	50.9
50 Hz	62.8	50 Hz	51.7
63 Hz	61.7	63 Hz	50.1
80 Hz	56.7	80 Hz	48.6
100 Hz	55.5	100 Hz	49.1
125 Hz	54.5	125 Hz	48.8
160 Hz	53.7	160 Hz	47.5
200 Hz	56.7	200 Hz	51.6
250 Hz	54.0	250 Hz	47.9
315 Hz	52.8	315 Hz	46.8
400 Hz	51.0	400 Hz	45.0
500 Hz	50.2	500 Hz	42.4
630 Hz	51.8	630 Hz	45.8
800 Hz	49.6	800 Hz	41.7
1000 Hz	49.9	1000 Hz	41.8
1250 Hz	49.6	1250 Hz	41.6
1600 Hz	47.6	1600 Hz	39.3
2000 Hz	45.7	2000 Hz	36.7
2500 Hz	43.6	2500 Hz	35.1
3150 Hz	40.6	3150 Hz	32.1
4000 Hz	37.8	4000 Hz	30.4
5000 Hz	35.4	5000 Hz	27.4
6300 Hz	33.0	6300 Hz	24.1
8000 Hz	30.9	8000 Hz	21.2
10000 Hz	27.8	10000 Hz	17.8
12500 Hz	26.1	12500 Hz	15.0
16000 Hz	23.9	16000 Hz	11.7
20000 Hz	18.8	20000 Hz	7.8

Punto nr. 14

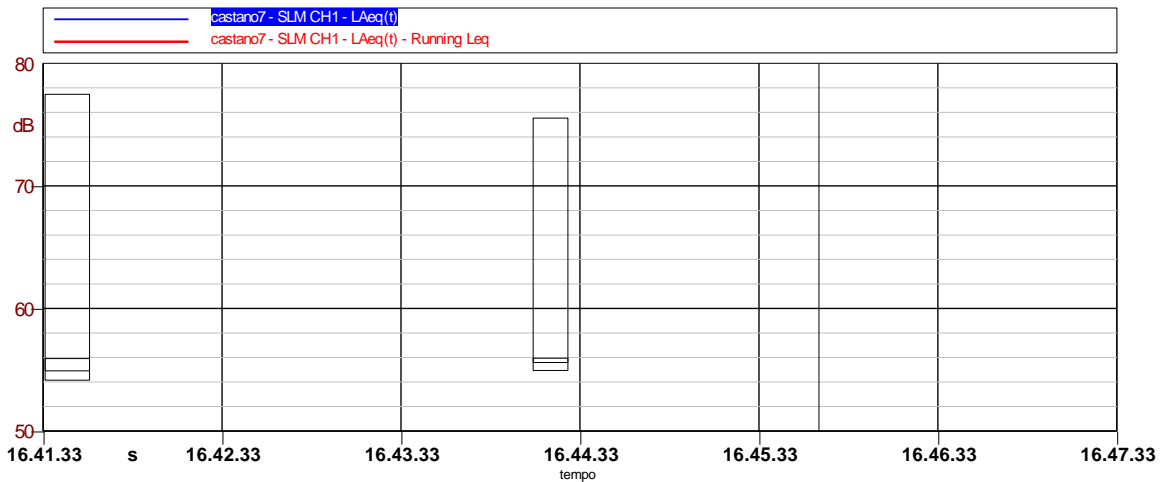
Via Baracca

Posizione: ciglio strada

Rilievi diurni

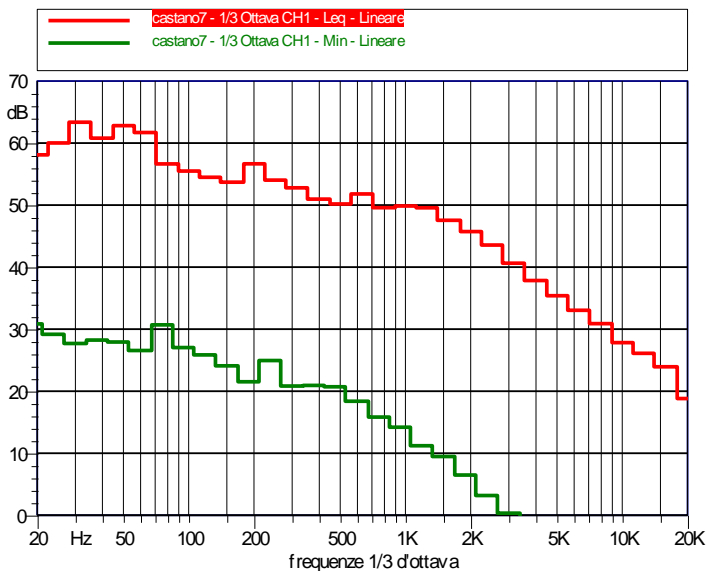


Nome: castano7		
Annotazioni: giorno	Data: 16/11/2007	Ora: 16.41.33
	Località: castano primo	
	Operatore: Ing.Porta Marco	
Durata Misura: 300.0 sec	Strumentazione: SoundBook S/N: 6214	



LAeq	LAmin	LAmax	LN01	LN10	LN50	LN90	LN95
56.1 dBA	53.6 dBA	63.2 dBA	69.7 dBA	59.2 dBA	55.7 dBA	54.7 dBA	54.5 dBA

Leq (originale): 58.8 dBA



Hz	dB
20 Hz	58.1
25 Hz	60.0
31.5 Hz	63.4
40 Hz	60.8
50 Hz	62.8
63 Hz	61.7
80 Hz	56.7
100 Hz	55.5
125 Hz	54.5
160 Hz	53.7
200 Hz	56.7
250 Hz	54.0
315 Hz	52.8
400 Hz	51.0
500 Hz	50.2
630 Hz	51.8
800 Hz	49.6
1000 Hz	49.9
1250 Hz	49.6
1600 Hz	47.6
2000 Hz	45.7
2500 Hz	43.6
3150 Hz	40.6
4000 Hz	37.8
5000 Hz	35.4
6300 Hz	33.0
8000 Hz	30.9
10000 Hz	27.8
12500 Hz	26.1
16000 Hz	23.9
20000 Hz	18.8

Hz	dB
20 Hz	45.3
25 Hz	44.6
31.5 Hz	51.9
40 Hz	50.9
50 Hz	51.7
63 Hz	50.1
80 Hz	48.6
100 Hz	49.1
125 Hz	48.8
160 Hz	47.5
200 Hz	51.6
250 Hz	47.9
315 Hz	46.8
400 Hz	45.0
500 Hz	42.4
630 Hz	45.8
800 Hz	41.7
1000 Hz	41.8
1250 Hz	41.6
1600 Hz	39.3
2000 Hz	36.7
2500 Hz	35.1
3150 Hz	32.1
4000 Hz	30.4
5000 Hz	27.4
6300 Hz	24.1
8000 Hz	21.2
10000 Hz	17.8
12500 Hz	15.0
16000 Hz	11.7
20000 Hz	7.8

Punto nr. 15

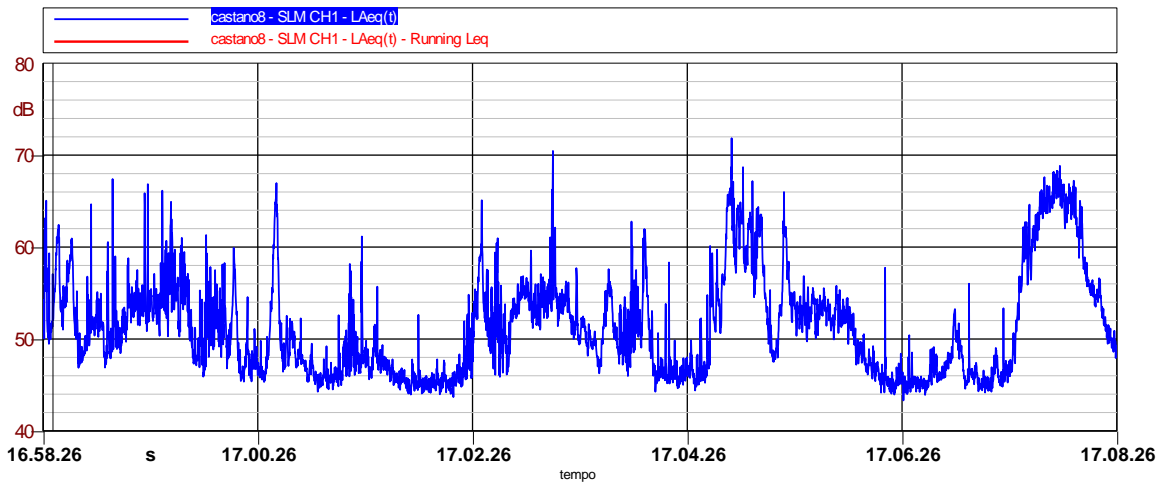
Via Mantegna

Posizione: antistante parcheggio

Rilievi diurni

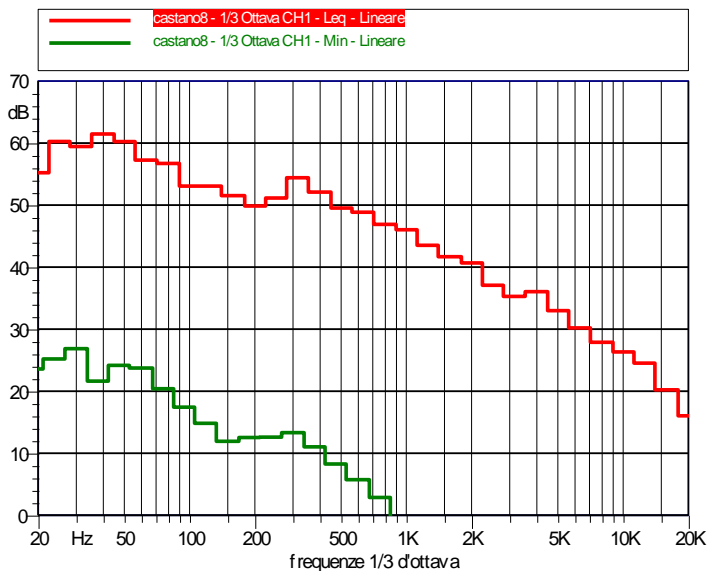


Nome: castano8		
Annotazioni: giorno	Data: 16/11/2007	Ora: 16.58.26
	Località: castano primo	
	Operatore: Ing.Porta Marco	
Durata Misura: 600.0 sec	Strumentazione: SoundBook S/N: 6214	



LAeq	LAmin	LAmax	LN01	LN10	LN50	LN90	LN95
56.0 dBA	43.3 dBA	71.8 dBA	66.3 dBA	59.9 dBA	50.7 dBA	45.5 dBA	45.1 dBA

Leq (originale): 56.0 dBA



Hz	dB
20 Hz	55.2
25 Hz	60.3
31.5 Hz	59.5
40 Hz	61.5
50 Hz	60.2
63 Hz	57.3
80 Hz	56.7
100 Hz	53.1
125 Hz	53.1
160 Hz	51.5
200 Hz	49.9
250 Hz	51.2
315 Hz	54.4
400 Hz	52.1
500 Hz	49.5
630 Hz	48.9
800 Hz	46.9
1000 Hz	46.0
1250 Hz	43.5
1600 Hz	41.7
2000 Hz	40.7
2500 Hz	37.1
3150 Hz	35.3
4000 Hz	36.1
5000 Hz	33.0
6300 Hz	30.2
8000 Hz	27.9
10000 Hz	26.3
12500 Hz	24.5
16000 Hz	20.2
20000 Hz	16.0

Hz	dB
20 Hz	39.5
25 Hz	43.7
31.5 Hz	42.6
40 Hz	46.3
50 Hz	44.5
63 Hz	46.1
80 Hz	47.8
100 Hz	42.5
125 Hz	45.1
160 Hz	44.6
200 Hz	41.3
250 Hz	38.3
315 Hz	35.7
400 Hz	32.8
500 Hz	33.4
630 Hz	33.5
800 Hz	34.2
1000 Hz	31.9
1250 Hz	29.2
1600 Hz	26.6
2000 Hz	23.8
2500 Hz	20.1
3150 Hz	15.5
4000 Hz	13.5
5000 Hz	10.1
6300 Hz	8.1
8000 Hz	7.6
10000 Hz	6.6
12500 Hz	5.8
16000 Hz	4.9
20000 Hz	4.1

Punto nr. 16

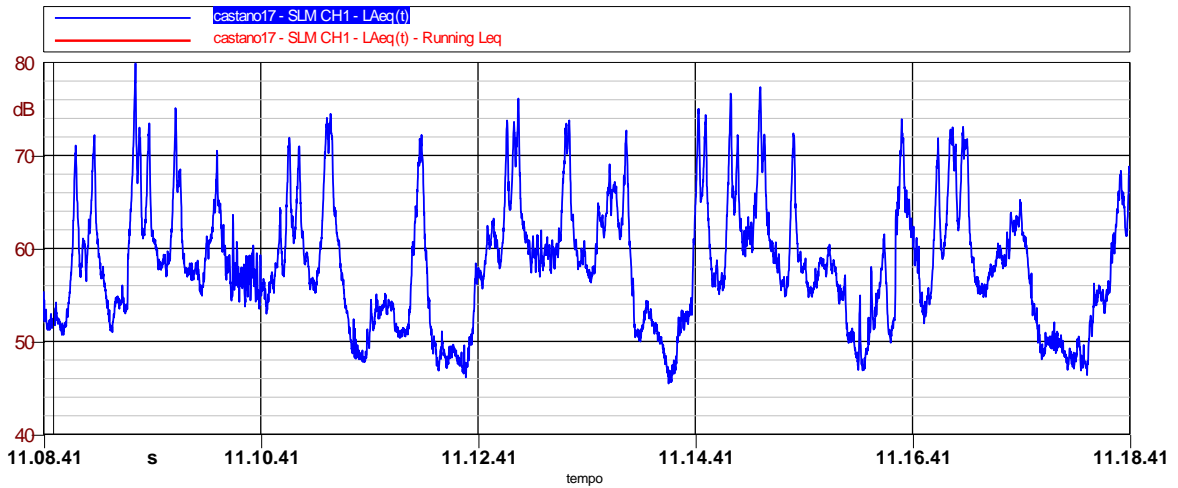
Via Mameli - asilo

Posizione: antistante parcheggio

Rilievi diurni

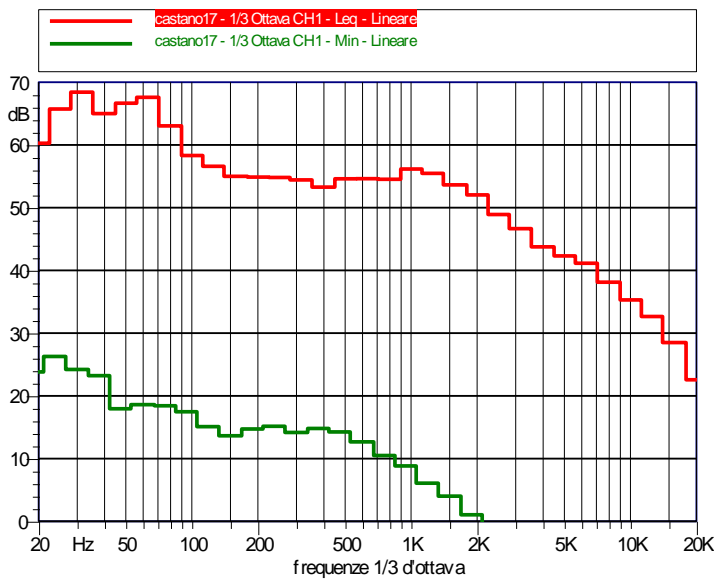


Nome: castano17		
Annotazioni: giorno asilo	Data: 27/11/2007	Ora: 11.08.41
	Località: castano	
Operatore: Ing.Porta Marco		
Durata Misura: 600.0 sec	Strumentazione: SoundBook S/N: 6214	



LAeq	LAmin	LAmax	LN01	LN10	LN50	LN90	LN95
63.6 dBA	45.5 dBA	79.9 dBA	73.6 dBA	67.9 dBA	57.9 dBA	49.6 dBA	48.3 dBA

Leq (originale): 63.6 dBA



Hz	dB	Hz	dB
20 Hz	60.3	20 Hz	40.8
25 Hz	65.7	25 Hz	46.5
31.5 Hz	68.4	31.5 Hz	46.8
40 Hz	65.0	40 Hz	45.4
50 Hz	66.7	50 Hz	44.7
63 Hz	67.6	63 Hz	47.2
80 Hz	63.1	80 Hz	45.1
100 Hz	58.3	100 Hz	44.1
125 Hz	56.6	125 Hz	38.8
160 Hz	55.0	160 Hz	39.5
200 Hz	54.9	200 Hz	39.3
250 Hz	54.8	250 Hz	38.4
315 Hz	54.4	315 Hz	36.0
400 Hz	53.3	400 Hz	34.5
500 Hz	54.6	500 Hz	35.6
630 Hz	54.6	630 Hz	36.1
800 Hz	54.5	800 Hz	35.1
1000 Hz	56.2	1000 Hz	35.7
1250 Hz	55.5	1250 Hz	35.2
1600 Hz	53.7	1600 Hz	33.6
2000 Hz	52.0	2000 Hz	31.4
2500 Hz	48.9	2500 Hz	29.7
3150 Hz	46.7	3150 Hz	27.0
4000 Hz	43.8	4000 Hz	24.9
5000 Hz	42.3	5000 Hz	21.9
6300 Hz	41.2	6300 Hz	19.9
8000 Hz	38.1	8000 Hz	16.7
10000 Hz	35.3	10000 Hz	14.9
12500 Hz	32.7	12500 Hz	12.2
16000 Hz	28.5	16000 Hz	9.1
20000 Hz	22.6	20000 Hz	5.9

Punto nr. 17

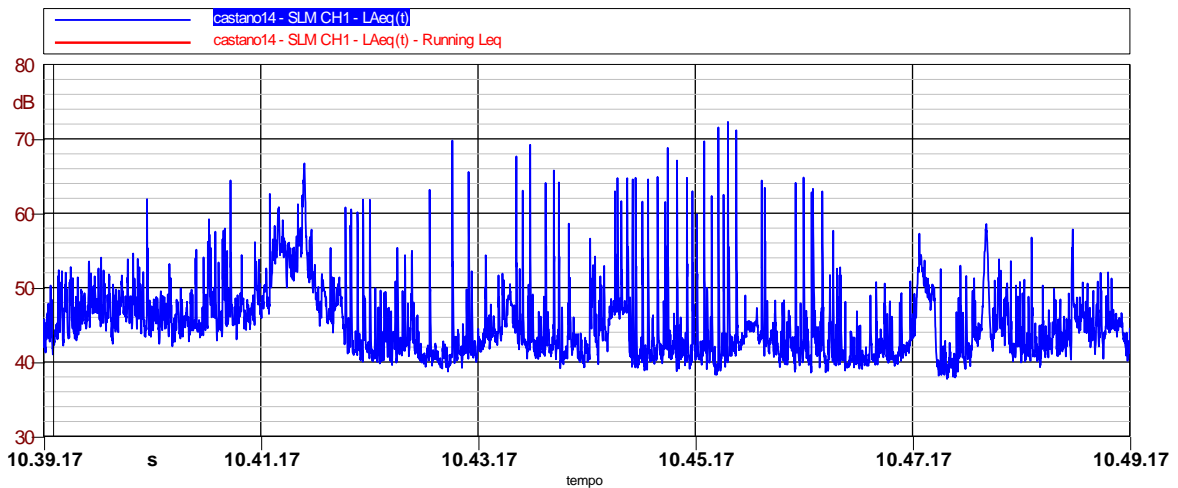
Via Giolitti - Scuole

Posizione: antistante parcheggio

Rilievi diurni e notturni

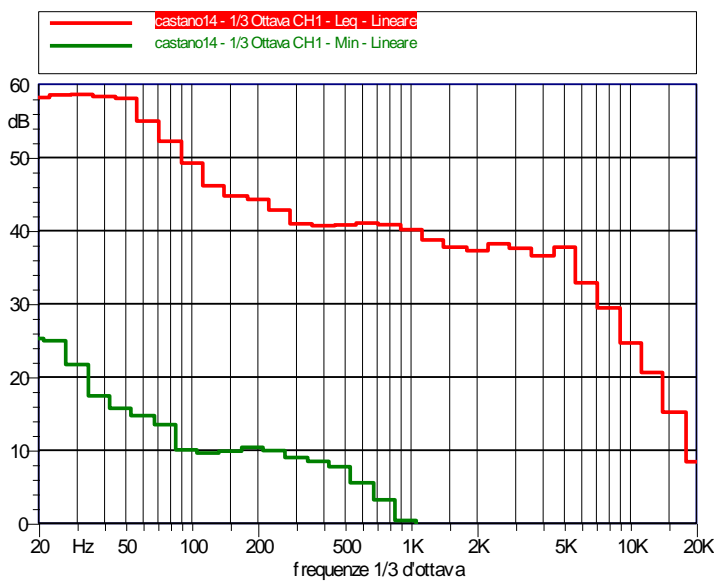


Nome: castano14		
Annotazioni: giorno scuole	Data: 27/11/2007	Ora: 10.39.17
	Località: castano	
Operatore: Ing.Porta Marco		
Durata Misura: 600.0 sec	Strumentazione: SoundBook S/N: 6214	



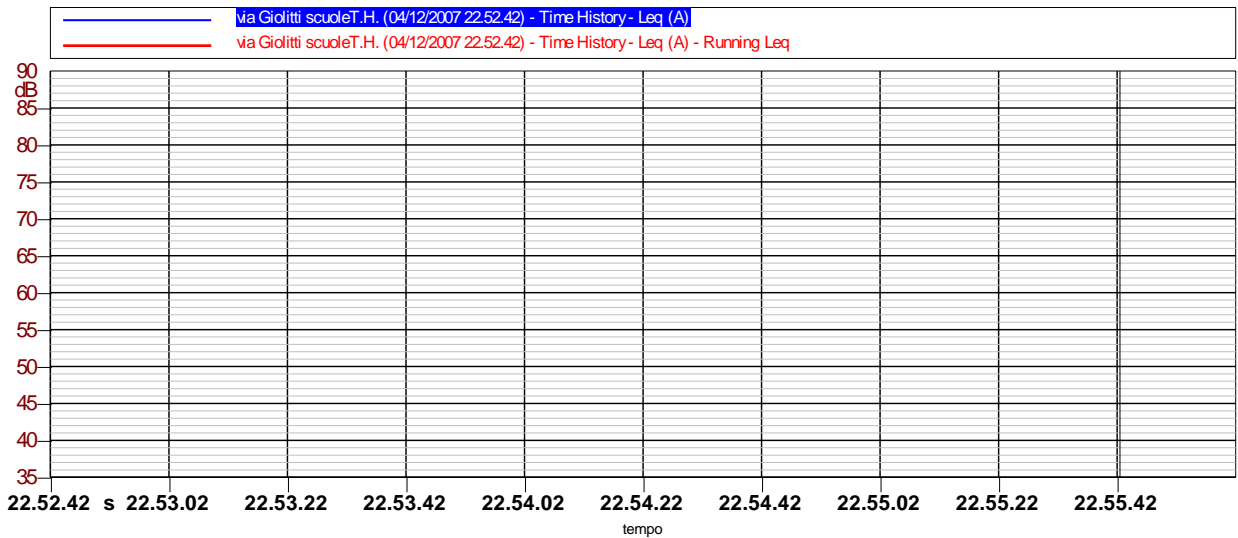
LAeq	LAmin	LAmax	LN01	LN10	LN50	LN90	LN95
50.0 dBA	37.7 dBA	72.3 dBA	61.4 dBA	52.1 dBA	44.6 dBA	40.7 dBA	40.1 dBA

Leq (originale): 50.0 dBA

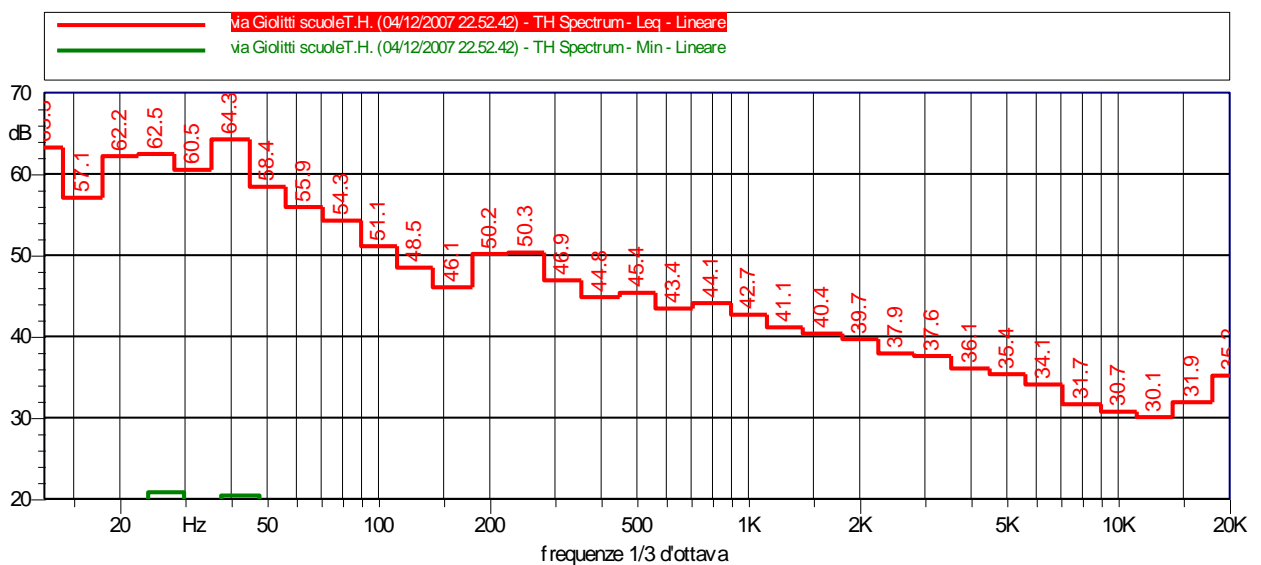


Hz	dB	Hz	dB
20 Hz	58.2	20 Hz	40.3
25 Hz	58.5	25 Hz	42.1
31.5 Hz	58.6	31.5 Hz	43.8
40 Hz	58.3	40 Hz	42.2
50 Hz	58.1	50 Hz	43.2
63 Hz	55.0	63 Hz	42.9
80 Hz	52.2	80 Hz	39.6
100 Hz	49.2	100 Hz	35.3
125 Hz	46.1	125 Hz	33.6
160 Hz	44.7	160 Hz	32.6
200 Hz	44.3	200 Hz	31.4
250 Hz	42.8	250 Hz	28.0
315 Hz	40.9	315 Hz	27.5
400 Hz	40.7	400 Hz	27.8
500 Hz	40.8	500 Hz	28.3
630 Hz	41.0	630 Hz	27.9
800 Hz	40.8	800 Hz	26.9
1000 Hz	40.1	1000 Hz	26.4
1250 Hz	38.7	1250 Hz	25.7
1600 Hz	37.8	1600 Hz	23.5
2000 Hz	37.3	2000 Hz	21.1
2500 Hz	38.2	2500 Hz	18.3
3150 Hz	37.6	3150 Hz	16.1
4000 Hz	36.6	4000 Hz	13.7
5000 Hz	37.8	5000 Hz	10.7
6300 Hz	32.9	6300 Hz	8.8
8000 Hz	29.5	8000 Hz	7.7
10000 Hz	24.6	10000 Hz	6.8
12500 Hz	20.6	12500 Hz	6.0
16000 Hz	15.2	16000 Hz	5.0
20000 Hz	8.4	20000 Hz	3.9

Nome: via Giolitti scuoleT.H. (04/12/2007 22.52.42)		Allegato 1
Annotazioni: notte	Data: 04/12/2007	Ora: 22.52.42
	Località: Castano Primo	
	Operatore: Ing. M. Porta	
Durata Misura: 180.6 sec	Strumentazione: Larson-Davis 824	



LAeq	LASmax	LAFmax	LN01	LN10	LN50	LN90	LN95
47.4A	68.4 dBA	76.1 dBA	66.0 dBA	51.8 dBA	45.8 dBA	41.2 dBA	40.5 dBA



Punto nr. 18

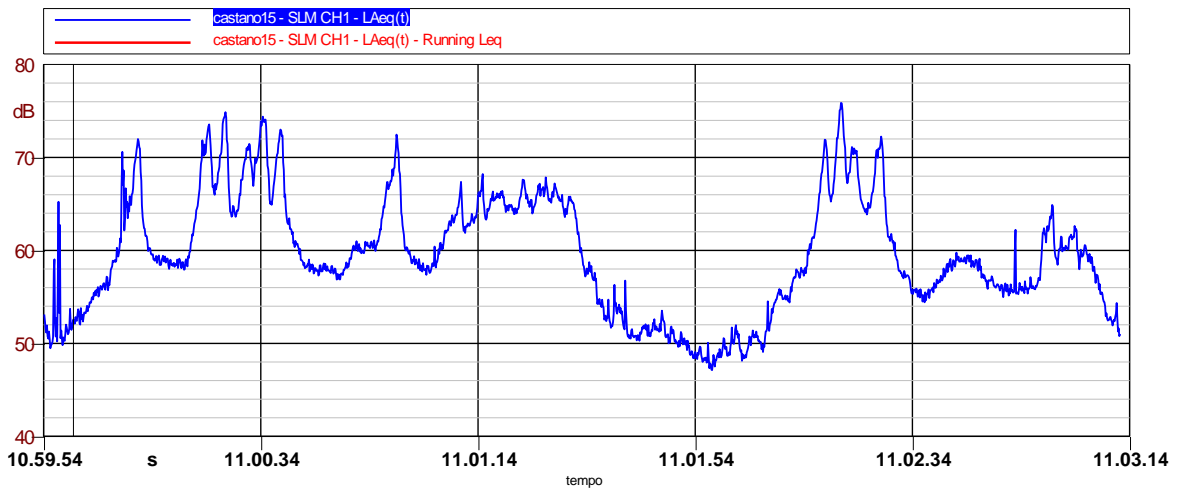
Via Colleoni – ponte sul canale Villoresi

Posizione: ciglio strada

Rilievi diurni e notturni

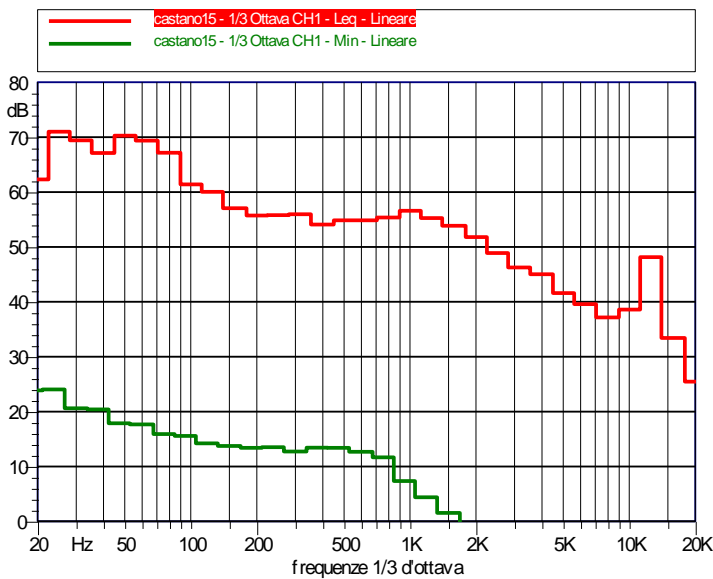


Nome: castano15		
Annotazioni: giorno asilo	Data: 27/11/2007	Ora: 10.59.54
	Località: castano	
	Operatore: Ing.Porta Marco	
Durata Misura: 198.4 sec	Strumentazione: SoundBook S/N: 6214	



LAeq	LAmin	LAmax	LN01	LN10	LN50	LN90	LN95
64.0 dBA	47.1 dBA	75.9 dBA	73.7 dBA	68.3 dBA	58.8 dBA	50.9 dBA	49.8 dBA

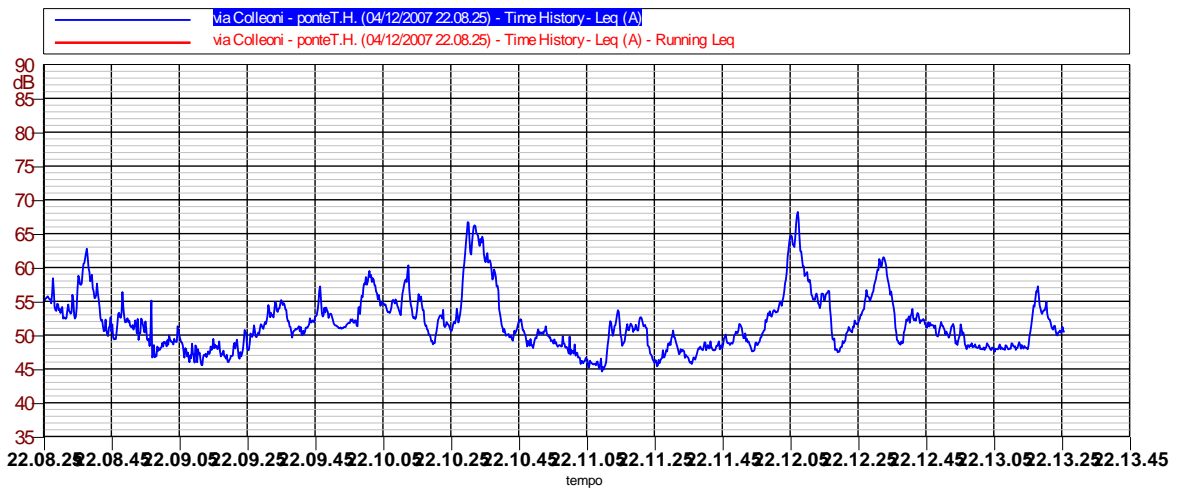
Leq (originale): 64.0 dBA



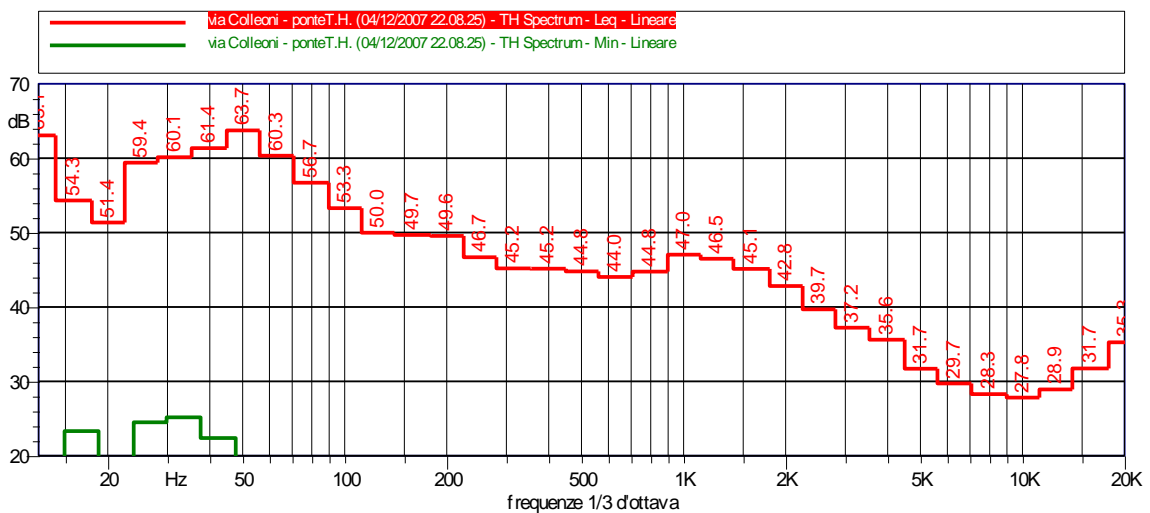
Hz	dB
20 Hz	62.3
25 Hz	71.0
31.5 Hz	69.4
40 Hz	67.1
50 Hz	70.3
63 Hz	69.4
80 Hz	67.2
100 Hz	61.4
125 Hz	60.0
160 Hz	57.1
200 Hz	55.7
250 Hz	55.8
315 Hz	55.9
400 Hz	54.1
500 Hz	54.9
630 Hz	54.8
800 Hz	55.4
1000 Hz	56.6
1250 Hz	55.3
1600 Hz	53.9
2000 Hz	51.8
2500 Hz	48.9
3150 Hz	46.3
4000 Hz	45.0
5000 Hz	41.6
6300 Hz	39.6
8000 Hz	37.2
10000 Hz	38.6
12500 Hz	48.2
16000 Hz	33.4
20000 Hz	25.5

Hz	dB
20 Hz	40.4
25 Hz	46.0
31.5 Hz	49.7
40 Hz	47.4
50 Hz	47.7
63 Hz	47.9
80 Hz	44.5
100 Hz	44.3
125 Hz	41.7
160 Hz	41.5
200 Hz	39.8
250 Hz	39.4
315 Hz	38.1
400 Hz	37.6
500 Hz	37.3
630 Hz	37.4
800 Hz	36.6
1000 Hz	37.3
1250 Hz	37.3
1600 Hz	36.6
2000 Hz	35.5
2500 Hz	31.2
3150 Hz	28.3
4000 Hz	25.4
5000 Hz	21.9
6300 Hz	19.5
8000 Hz	18.2
10000 Hz	16.1
12500 Hz	12.6
16000 Hz	10.1
20000 Hz	6.1

Nome: via Colleoni - ponteT.H. (04/12/2007 22.08.25)		Allegato 1
Annotazioni: notte	Data: 04/12/2007	Ora: 22.08.25
	Località: Castano Primo	
Durata Misura: 300.8 sec	Operatore: Ing. M. Porta	
	Strumentazione: Larson-Davis 824	



LAeq	LASmax	LAFmax	LN01	LN10	LN50	LN90	LN95
54.6A	66.4 dBA	68.3 dBA	64.9 dBA	57.5 dBA	51.0 dBA	47.4 dBA	46.5 dBA



Punto nr. 19

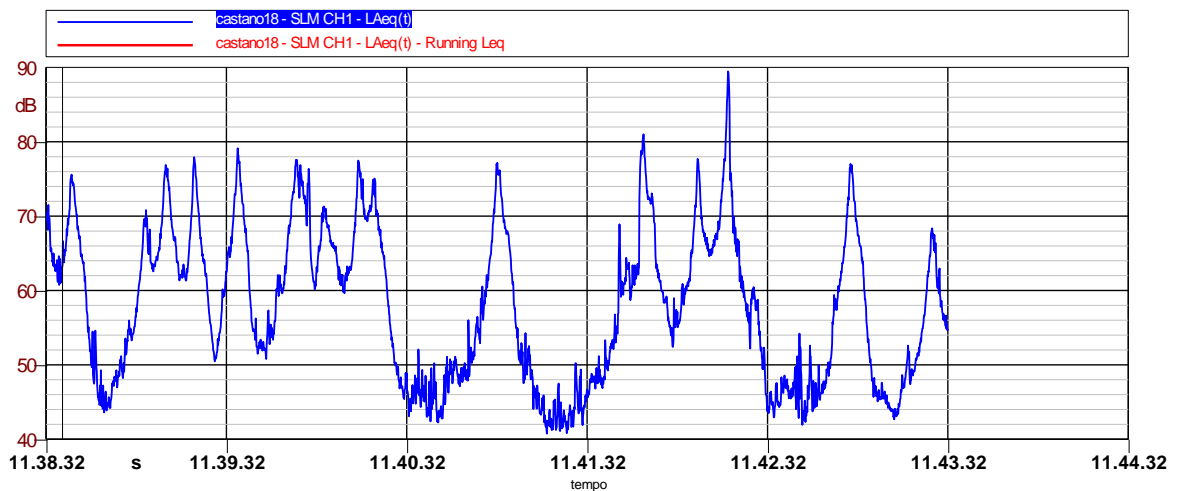
Via San Antonio - succursale scuole Torno

Posizione: ciglio strada

Rilievi diurni e notturni

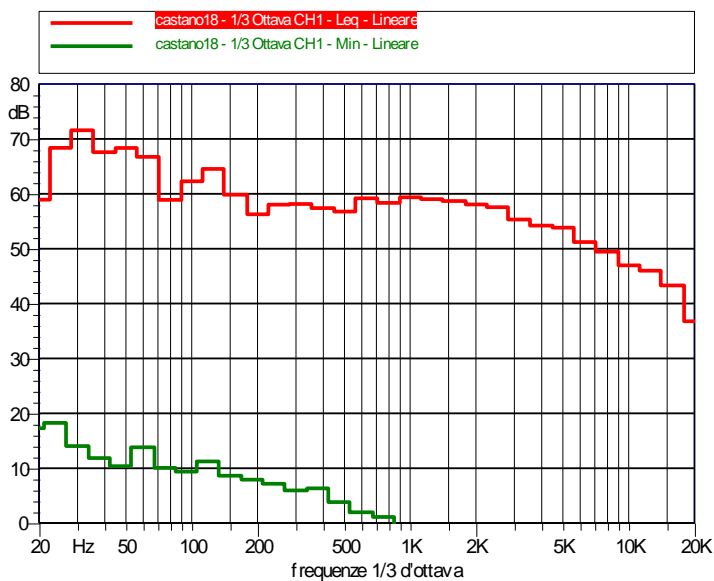


Nome: castano18		
Annotazioni: giorno succusale	Data: 27/11/2007	Ora: 11.38.32
	Località: castano	
Operatore: Ing.Porta Marco		
Durata Misura: 300.0 sec	Strumentazione: SoundBook S/N: 6214	



LAeq	LAmin	LAmax	LN01	LN10	LN50	LN90	LN95
68.6 dBA	40.8 dBA	89.5 dBA	78.4 dBA	72.2 dBA	58.1 dBA	45.1 dBA	43.8 dBA

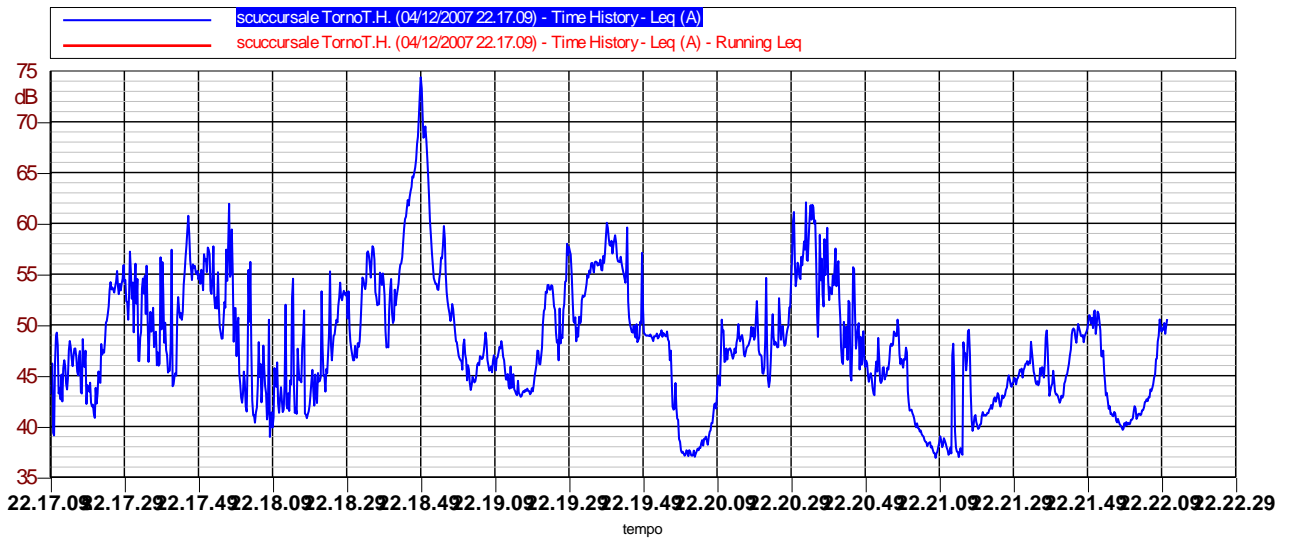
Leq (originale): 68.6 dBA



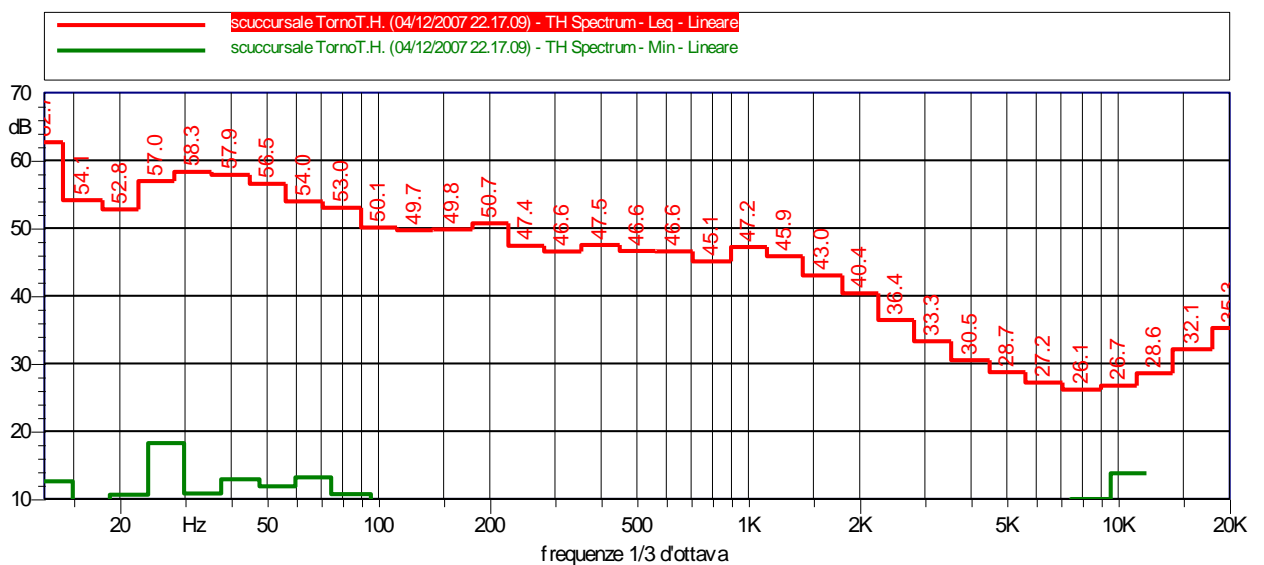
Hz	dB
20 Hz	58.9
25 Hz	68.4
31.5 Hz	71.6
40 Hz	67.6
50 Hz	68.4
63 Hz	66.7
80 Hz	58.9
100 Hz	62.3
125 Hz	64.5
160 Hz	59.9
200 Hz	56.3
250 Hz	58.0
315 Hz	58.1
400 Hz	57.4
500 Hz	56.8
630 Hz	59.2
800 Hz	58.4
1000 Hz	59.4
1250 Hz	59.0
1600 Hz	58.7
2000 Hz	58.1
2500 Hz	57.6
3150 Hz	55.3
4000 Hz	54.2
5000 Hz	53.8
6300 Hz	51.2
8000 Hz	49.5
10000 Hz	47.0
12500 Hz	46.0
16000 Hz	43.3
20000 Hz	36.8

Hz	dB
20 Hz	36.6
25 Hz	39.3
31.5 Hz	40.9
40 Hz	43.0
50 Hz	41.2
63 Hz	42.1
80 Hz	37.9
100 Hz	35.7
125 Hz	34.3
160 Hz	37.7
200 Hz	33.9
250 Hz	33.3
315 Hz	35.1
400 Hz	32.5
500 Hz	31.8
630 Hz	31.0
800 Hz	29.8
1000 Hz	30.2
1250 Hz	27.7
1600 Hz	25.8
2000 Hz	25.0
2500 Hz	22.4
3150 Hz	19.8
4000 Hz	15.6
5000 Hz	12.4
6300 Hz	9.6
8000 Hz	7.9
10000 Hz	6.8
12500 Hz	6.1
16000 Hz	5.2
20000 Hz	4.2

Nome: scuccursale TornoT.H. (04/12/2007 22.17.09)		Allegato 1
Annotazioni: notte	Data: 04/12/2007	Ora: 22.17.09
	Località: Castano Primo	
	Operatore: Ing. M. Porta	
Durata Misura: 301.6 sec	Strumentazione: Larson-Davis 824	



LAeq	LASmax	LAFmax	LN01	LN10	LN50	LN90	LN95
54.4A	71.7 dBA	74.6 dBA	66.3 dBA	56.2 dBA	47.7 dBA	40.9 dBA	38.6 dBA



Punto nr. 20

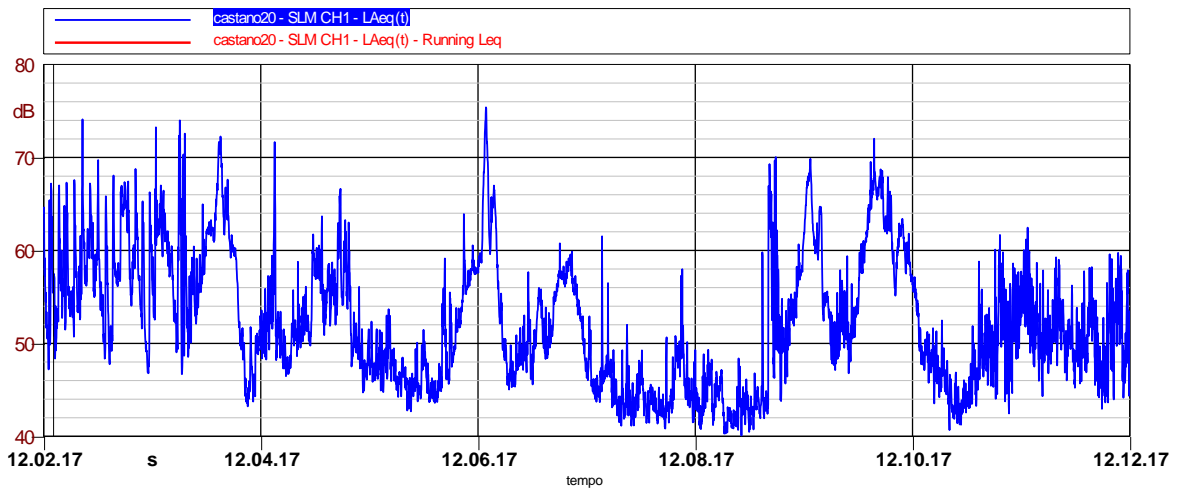
Via Moroni - scuole medie Acerbi

Posizione: ciglio strada

Rilievi diurni

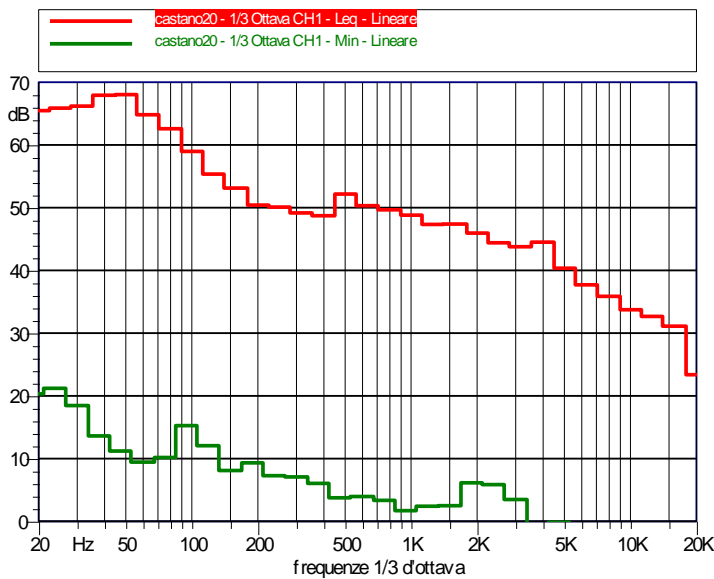


Nome: castano20		
Annotazioni: giorno acerbi	Data: 27/11/2007	Ora: 12.02.17
	Località: castano	
Durata Misura: 600.0 sec	Operatore: Ing.Porta Marco	
	Strumentazione: SoundBook S/N: 6214	



LAeq	LAmin	LAmax	LN01	LN10	LN50	LN90	LN95
58.5 dBA	40.1 dBA	75.4 dBA	69.2 dBA	62.4 dBA	51.5 dBA	44.1 dBA	43.0 dBA

Leq (originale): 58.5 dBA



Hz	dB	Hz	dB
20 Hz	65.5	20 Hz	37.0
25 Hz	65.9	25 Hz	40.2
31.5 Hz	66.2	31.5 Hz	40.3
40 Hz	67.9	40 Hz	40.2
50 Hz	68.0	50 Hz	41.2
63 Hz	64.8	63 Hz	42.1
80 Hz	62.6	80 Hz	39.4
100 Hz	59.0	100 Hz	34.5
125 Hz	55.4	125 Hz	32.1
160 Hz	53.1	160 Hz	30.3
200 Hz	50.4	200 Hz	31.1
250 Hz	50.1	250 Hz	36.2
315 Hz	49.2	315 Hz	32.9
400 Hz	48.7	400 Hz	29.0
500 Hz	52.2	500 Hz	30.2
630 Hz	50.3	630 Hz	28.2
800 Hz	49.7	800 Hz	28.0
1000 Hz	48.8	1000 Hz	26.9
1250 Hz	47.3	1250 Hz	24.6
1600 Hz	47.4	1600 Hz	24.8
2000 Hz	46.0	2000 Hz	24.2
2500 Hz	44.4	2500 Hz	22.6
3150 Hz	43.8	3150 Hz	23.3
4000 Hz	44.5	4000 Hz	23.4
5000 Hz	40.4	5000 Hz	27.0
6300 Hz	37.7	6300 Hz	26.8
8000 Hz	35.9	8000 Hz	24.4
10000 Hz	33.7	10000 Hz	18.9
12500 Hz	32.7	12500 Hz	20.7
16000 Hz	31.1	16000 Hz	12.2
20000 Hz	23.4	20000 Hz	5.1

Punto nr. 21

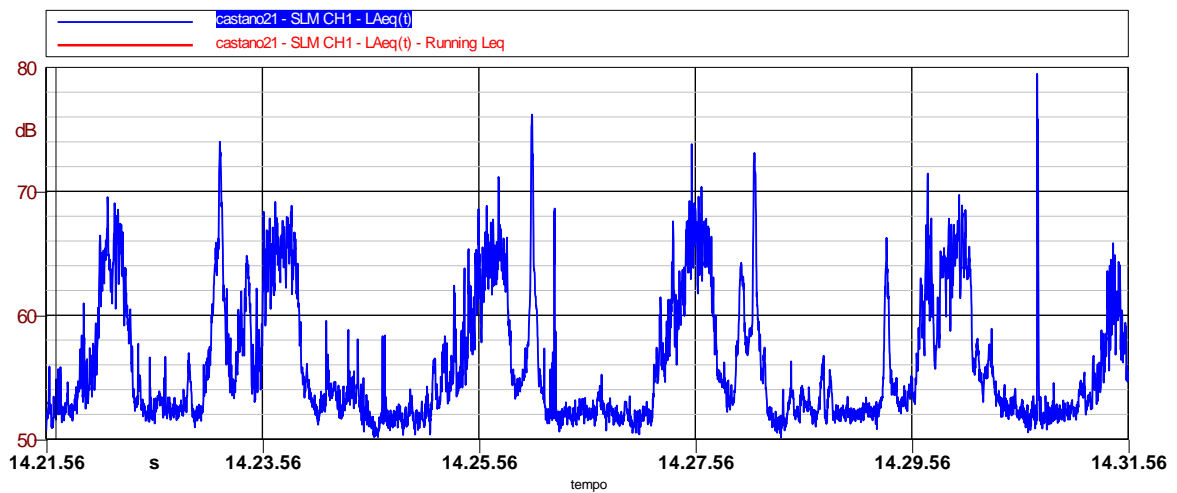
Via Malvaglio

Posizione: ciglio strada

Rilievi diurni

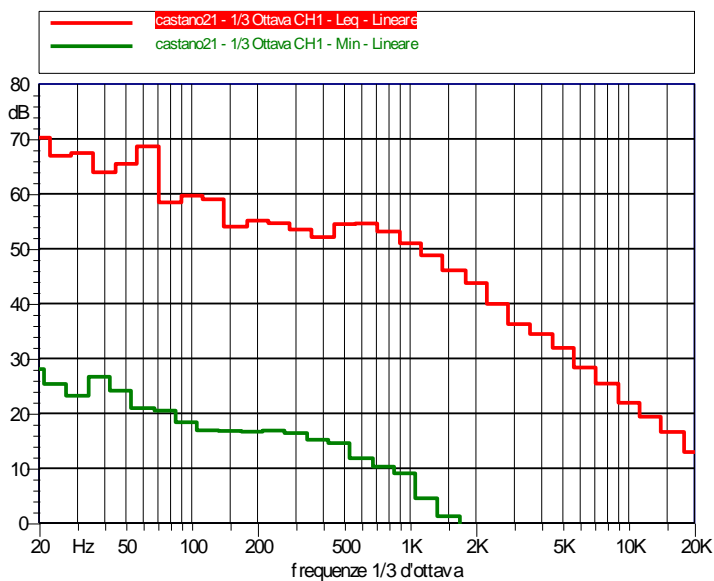


Nome: castano21		
Annotazioni: <i>gbiomo industriale</i>	Data: 27/11/2007	Ora: 14.21.56
	Località: <i>castano</i>	
Operatore: <i>Ing.Porta Marco</i>		
Durata Misura: 600.0 sec	Strumentazione: <i>SoundBook S/N: 6214</i>	



LAeq	LAmin	LAmax	LN01	LN10	LN50	LN90	LN95
60.0 dBA	50.1 dBA	79.5 dBA	68.9 dBA	64.5 dBA	53.9 dBA	51.7 dBA	51.5 dBA

Leq (originale): 60.0 dBA



Hz	dB
20 Hz	70.2
25 Hz	66.9
31.5 Hz	67.4
40 Hz	63.9
50 Hz	65.5
63 Hz	68.6
80 Hz	58.4
100 Hz	59.7
125 Hz	59.0
160 Hz	54.0
200 Hz	55.1
250 Hz	54.7
315 Hz	53.5
400 Hz	52.1
500 Hz	54.5
630 Hz	54.6
800 Hz	53.1
1000 Hz	51.0
1250 Hz	48.8
1600 Hz	46.1
2000 Hz	43.7
2500 Hz	39.9
3150 Hz	36.3
4000 Hz	34.5
5000 Hz	31.9
6300 Hz	28.3
8000 Hz	25.4
10000 Hz	21.9
12500 Hz	19.4
16000 Hz	16.6
20000 Hz	13.0

Hz	dB
20 Hz	57.7
25 Hz	54.6
31.5 Hz	54.6
40 Hz	51.1
50 Hz	51.9
63 Hz	49.2
80 Hz	47.1
100 Hz	50.5
125 Hz	48.0
160 Hz	44.8
200 Hz	44.4
250 Hz	42.2
315 Hz	40.8
400 Hz	40.7
500 Hz	40.5
630 Hz	40.7
800 Hz	40.3
1000 Hz	39.1
1250 Hz	38.4
1600 Hz	35.7
2000 Hz	34.2
2500 Hz	32.9
3150 Hz	28.4
4000 Hz	25.1
5000 Hz	21.8
6300 Hz	18.4
8000 Hz	13.9
10000 Hz	9.1
12500 Hz	6.8
16000 Hz	5.8
20000 Hz	4.2

Punto nr. 22

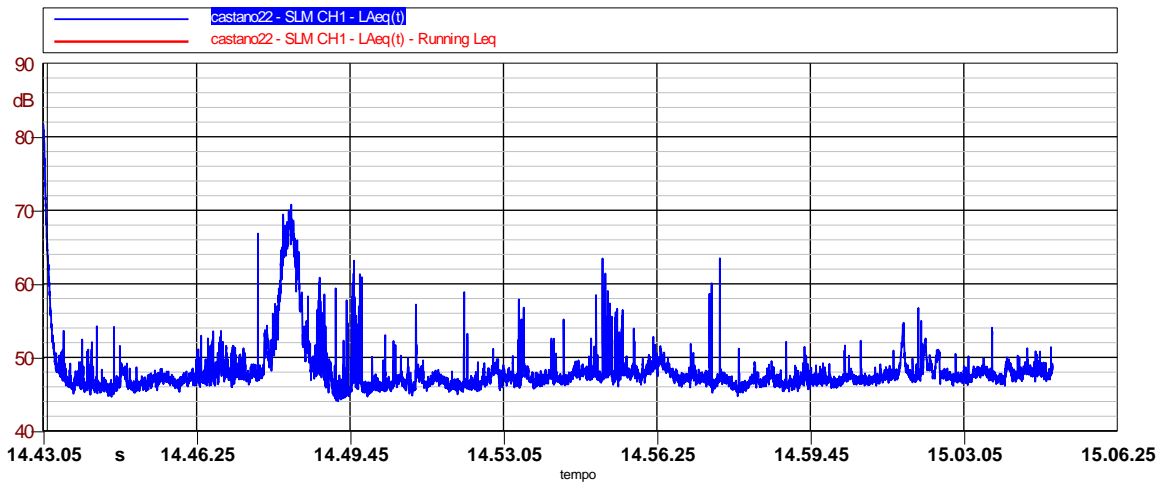
Via Campioni

Posizione: giardini pubblici – lato ferrovia

Rilievi diurni

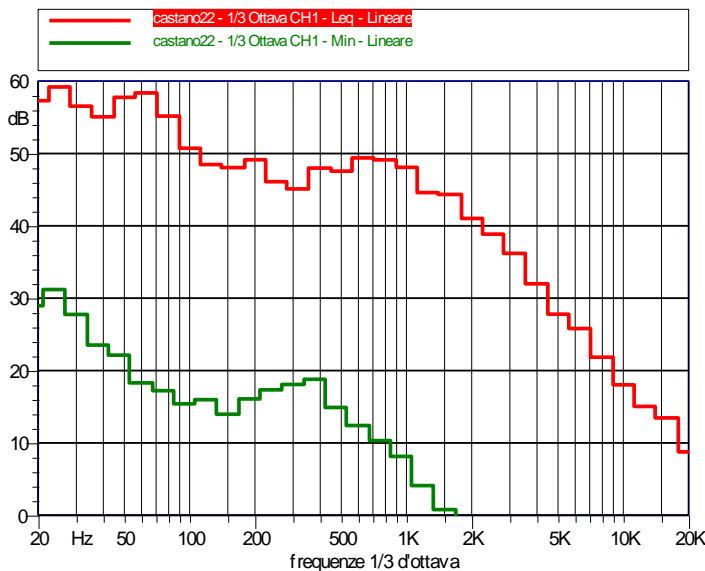


Nome: castano22		
Annotazioni: gbiorno via campioni	Data: 27/11/2007	Ora: 14.43.05
	Località: castano	
	Operatore: Ing.Porta Marco	
Durata Misura: 1315.7 sec	Strumentazione: SoundBook S/N: 6214	



LAeq	LAmin	LAmax	LN01	LN10	LN50	LN90	LN95
55.3 dBA	44.0 dBA	81.7 dBA	66.5 dBA	50.1 dBA	47.3 dBA	46.1 dBA	45.9 dBA

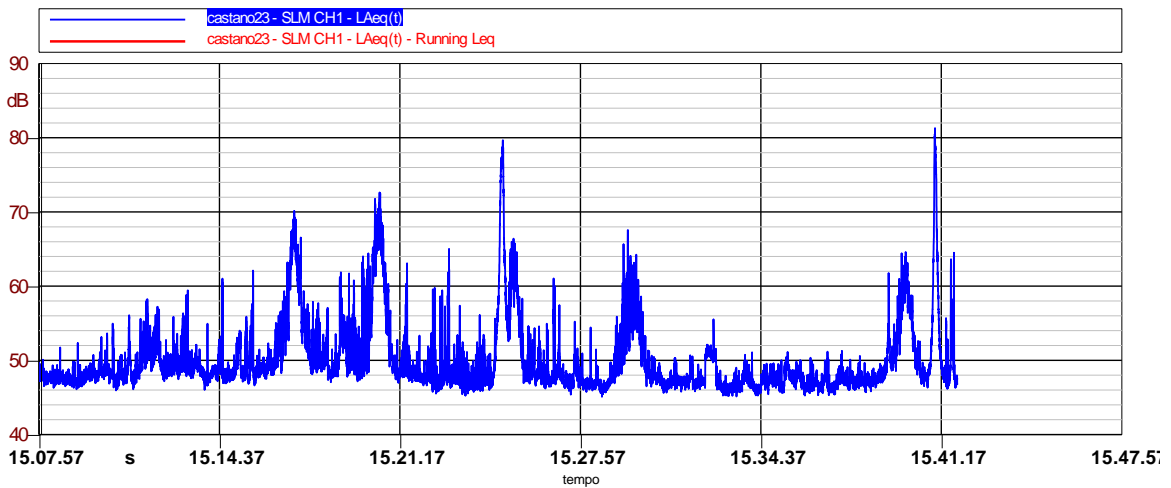
Leq (originale): 55.3 dBA



Hz	dB
20 Hz	57.3
25 Hz	59.2
31.5 Hz	56.5
40 Hz	55.1
50 Hz	57.8
63 Hz	58.4
80 Hz	55.2
100 Hz	50.7
125 Hz	48.5
160 Hz	48.1
200 Hz	49.1
250 Hz	46.1
315 Hz	45.1
400 Hz	48.0
500 Hz	47.6
630 Hz	49.4
800 Hz	49.1
1000 Hz	48.1
1250 Hz	44.6
1600 Hz	44.3
2000 Hz	41.0
2500 Hz	38.8
3150 Hz	36.2
4000 Hz	32.0
5000 Hz	27.8
6300 Hz	25.8
8000 Hz	21.8
10000 Hz	18.0
12500 Hz	15.0
16000 Hz	13.5
20000 Hz	8.8

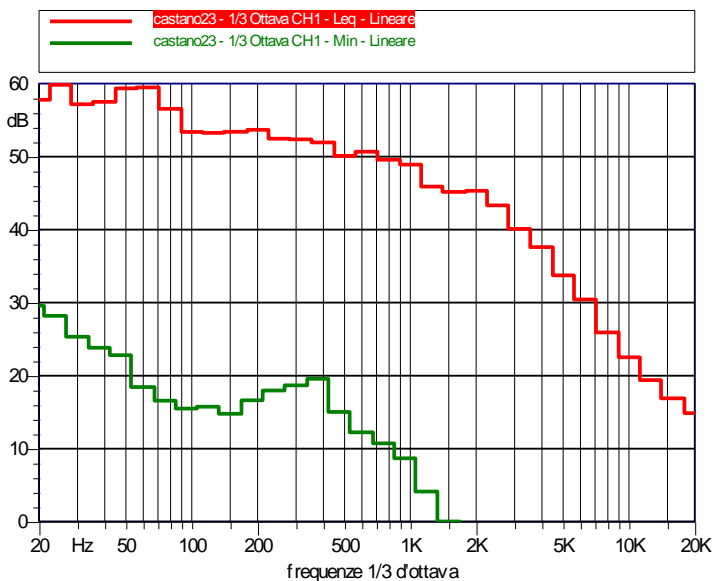
Hz	dB
20 Hz	41.7
25 Hz	48.3
31.5 Hz	42.5
40 Hz	44.4
50 Hz	46.9
63 Hz	49.1
80 Hz	45.7
100 Hz	41.4
125 Hz	40.0
160 Hz	36.2
200 Hz	35.1
250 Hz	33.3
315 Hz	33.9
400 Hz	31.9
500 Hz	34.0
630 Hz	35.2
800 Hz	36.0
1000 Hz	36.7
1250 Hz	32.8
1600 Hz	30.3
2000 Hz	28.2
2500 Hz	26.0
3150 Hz	22.0
4000 Hz	18.7
5000 Hz	12.9
6300 Hz	9.2
8000 Hz	7.4
10000 Hz	6.4
12500 Hz	5.9
16000 Hz	5.0
20000 Hz	4.0

Nome: castano23		
Annotazioni: gbiorno via campioni	Data: 27/11/2007	Ora: 15.07.57
	Località: castano	
	Operatore: Ing.Porta Marco	
Durata Misura: 2035.5 sec	Strumentazione: SoundBook S/N: 6214	



LAeq	LAmin	LAmax	LN01	LN10	LN50	LN90	LN95
57.8 dBA	45.1 dBA	81.3 dBA	68.6 dBA	55.9 dBA	48.3 dBA	46.7 dBA	46.4 dBA

Leq (originale): 57.8 dBA



Hz	dB	Hz	dB
20 Hz	57.8	20 Hz	42.3
25 Hz	59.8	25 Hz	46.1
31.5 Hz	57.2	31.5 Hz	44.2
40 Hz	57.5	40 Hz	44.1
50 Hz	59.3	50 Hz	47.5
63 Hz	59.5	63 Hz	46.1
80 Hz	56.6	80 Hz	43.2
100 Hz	53.4	100 Hz	41.7
125 Hz	53.3	125 Hz	40.7
160 Hz	53.4	160 Hz	36.4
200 Hz	53.7	200 Hz	34.5
250 Hz	52.5	250 Hz	33.4
315 Hz	52.4	315 Hz	33.6
400 Hz	51.9	400 Hz	32.7
500 Hz	50.1	500 Hz	34.5
630 Hz	50.7	630 Hz	35.9
800 Hz	49.6	800 Hz	36.6
1000 Hz	48.9	1000 Hz	37.5
1250 Hz	45.9	1250 Hz	32.9
1600 Hz	45.2	1600 Hz	30.1
2000 Hz	45.3	2000 Hz	28.6
2500 Hz	43.3	2500 Hz	26.6
3150 Hz	40.1	3150 Hz	22.0
4000 Hz	37.6	4000 Hz	17.9
5000 Hz	33.7	5000 Hz	12.4
6300 Hz	30.4	6300 Hz	9.1
8000 Hz	25.9	8000 Hz	7.5
10000 Hz	22.5	10000 Hz	6.4
12500 Hz	19.4	12500 Hz	5.9
16000 Hz	16.9	16000 Hz	4.9
20000 Hz	14.9	20000 Hz	4.0

ELENCO DEI PUNTI OGGETTO DEL RILIEVO:

23	Strada Malpensa Boffalora <u>Posizione:</u> lato strada direzione nord
24	Strada Malpensa Boffalora <u>Posizione:</u> lato strada direzione sud
25	Strada Malpensa Boffalora <u>Posizione:</u> cavalcavia strada direzione nord
26	Strada Malpensa Boffalora <u>Posizione:</u> cavalcavia strada arretrato circa 50 m
27	Strada Malpensa Boffalora <u>Posizione:</u> lato strada direzione nord

Punto n. 23

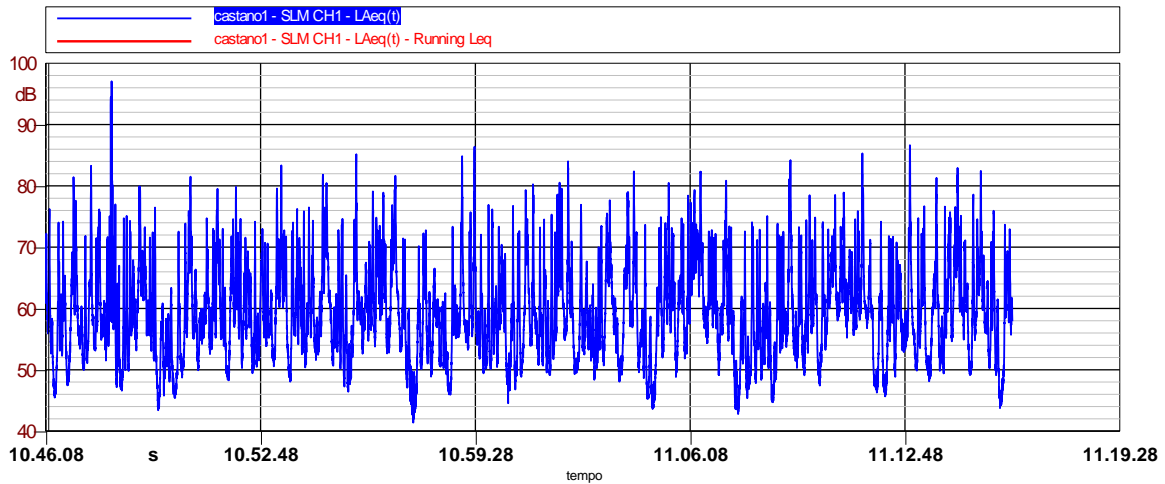
Strada Malpensa Boffalora

Posizione: lato strada direzione nord

Rilievi diurni

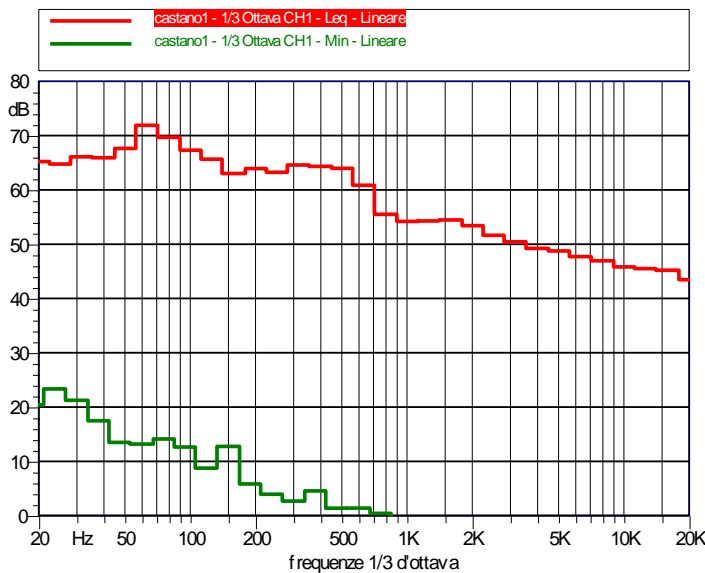


Nome: castano1		
Annotazioni: strada nova	Data: 09/06/2008	Ora: 10.46.08
	Località: castano	
	Operatore: Ing.Porta Marco	
Durata Misura: 1800.0 sec	Strumentazione: SoundBook S/N: 18798512	



LAeq	LAmin	LAmax	LN01	LN10	LN50	LN90	LN95
68.0 dBA	41.4 dBA	97.1 dBA	79.2 dBA	70.6 dBA	58.9 dBA	50.2 dBA	48.2 dBA

Leq (originale): 68.0 dBA



Hz	dB	Hz	dB
20 Hz	65.2	20 Hz	37.8
25 Hz	64.8	25 Hz	42.1
31.5 Hz	66.1	31.5 Hz	45.1
40 Hz	65.9	40 Hz	46.5
50 Hz	67.6	50 Hz	44.3
63 Hz	71.9	63 Hz	47.2
80 Hz	69.7	80 Hz	45.1
100 Hz	67.3	100 Hz	41.3
125 Hz	65.7	125 Hz	37.4
160 Hz	63.0	160 Hz	37.1
200 Hz	63.9	200 Hz	38.0
250 Hz	63.2	250 Hz	36.5
315 Hz	64.6	315 Hz	32.6
400 Hz	64.3	400 Hz	36.6
500 Hz	64.0	500 Hz	29.7
630 Hz	60.9	630 Hz	27.8
800 Hz	55.5	800 Hz	26.6
1000 Hz	54.2	1000 Hz	28.4
1250 Hz	54.3	1250 Hz	25.2
1600 Hz	54.5	1600 Hz	25.3
2000 Hz	53.4	2000 Hz	24.3
2500 Hz	51.6	2500 Hz	21.7
3150 Hz	50.4	3150 Hz	18.8
4000 Hz	49.2	4000 Hz	17.0
5000 Hz	48.8	5000 Hz	14.6
6300 Hz	47.7	6300 Hz	12.0
8000 Hz	46.9	8000 Hz	9.0
10000 Hz	45.8	10000 Hz	7.3
12500 Hz	45.5	12500 Hz	6.3
16000 Hz	45.2	16000 Hz	5.8
20000 Hz	43.5	20000 Hz	4.2

Punto n. 24

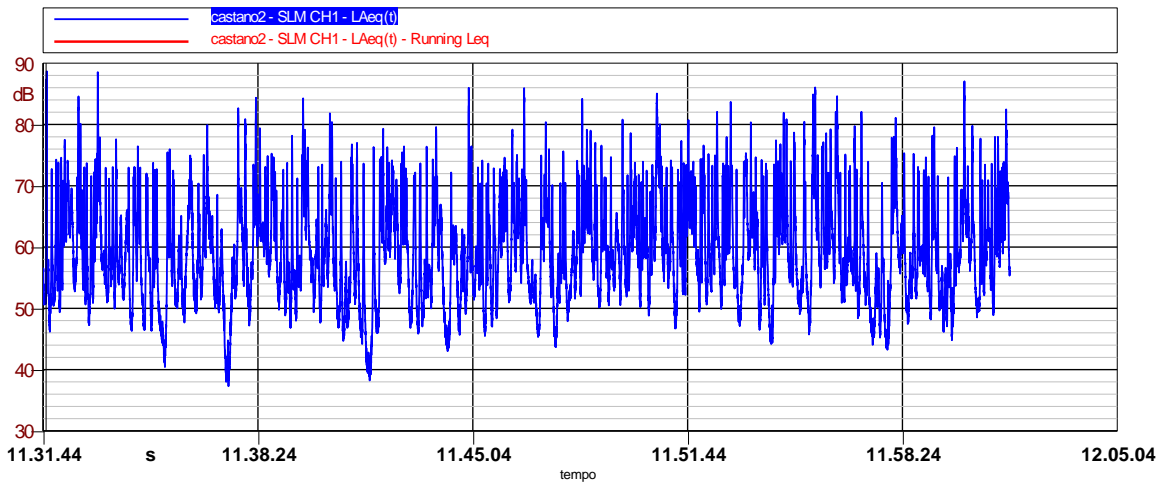
Strada Malpensa Boffalora

Posizione: lato strada direzione sud

Rilievi diurni

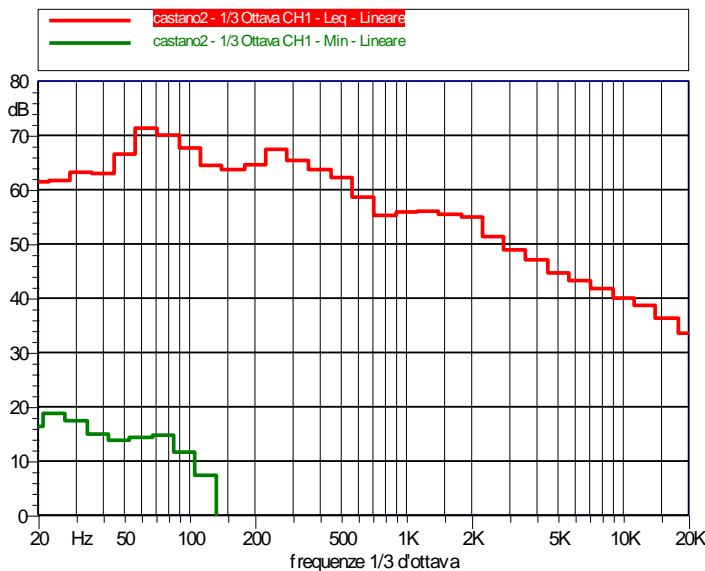


Nome: castano2		
Annotazioni: strada nova SUD	Data: 09/06/2008	Ora: 11.31.44
	Località: castano	
	Operatore: Ing.Porta Marco	
Durata Misura: 1800.0 sec	Strumentazione: SoundBook S/N: 18808600	



LAeq	LAmin	LAmax	LN01	LN10	LN50	LN90	LN95
68.0 dBA	37.3 dBA	88.7 dBA	79.8 dBA	71.4 dBA	58.9 dBA	49.4 dBA	47.1 dBA

Leq (originale): 68.0 dBA



Hz	dB
20 Hz	61.5
25 Hz	61.7
31.5 Hz	63.2
40 Hz	63.0
50 Hz	66.5
63 Hz	71.3
80 Hz	70.0
100 Hz	67.7
125 Hz	64.5
160 Hz	63.7
200 Hz	64.6
250 Hz	67.4
315 Hz	65.4
400 Hz	63.7
500 Hz	62.2
630 Hz	58.6
800 Hz	55.3
1000 Hz	55.9
1250 Hz	56.0
1600 Hz	55.5
2000 Hz	55.0
2500 Hz	51.4
3150 Hz	48.9
4000 Hz	47.1
5000 Hz	44.7
6300 Hz	43.2
8000 Hz	41.8
10000 Hz	40.0
12500 Hz	38.7
16000 Hz	36.3
20000 Hz	33.6

Hz	dB
20 Hz	33.7
25 Hz	40.1
31.5 Hz	39.3
40 Hz	39.0
50 Hz	40.3
63 Hz	42.7
80 Hz	41.3
100 Hz	38.8
125 Hz	37.7
160 Hz	38.2
200 Hz	38.6
250 Hz	35.5
315 Hz	31.3
400 Hz	23.1
500 Hz	18.1
630 Hz	18.0
800 Hz	19.2
1000 Hz	19.1
1250 Hz	19.0
1600 Hz	20.3
2000 Hz	19.4
2500 Hz	16.1
3150 Hz	12.9
4000 Hz	9.5
5000 Hz	8.5
6300 Hz	7.9
8000 Hz	7.7
10000 Hz	7.0
12500 Hz	6.1
16000 Hz	5.3
20000 Hz	4.2

Punto n. 25

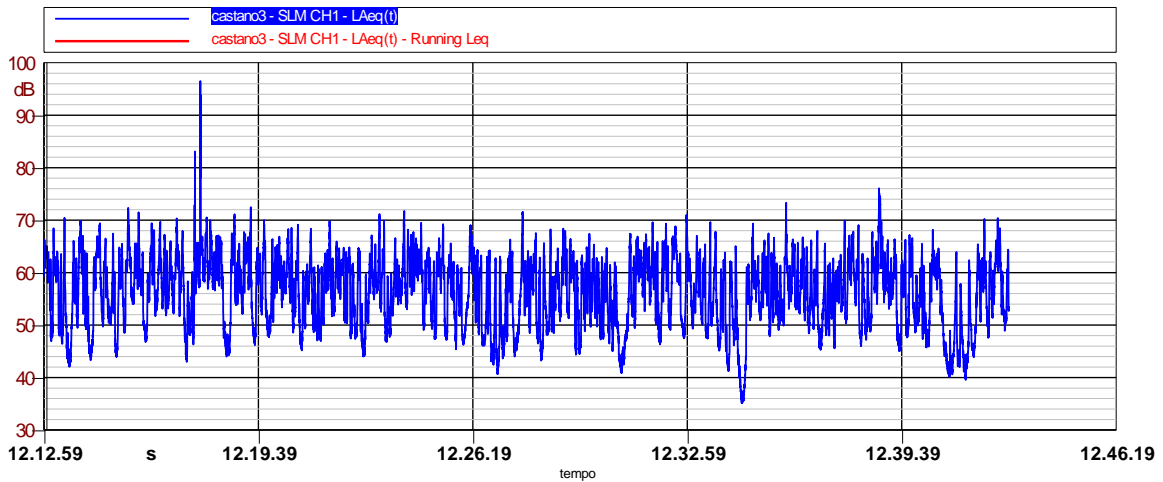
Strada Malpensa Boffalora

Posizione: cavalcavia strada direzione nord

Rilievi diurni

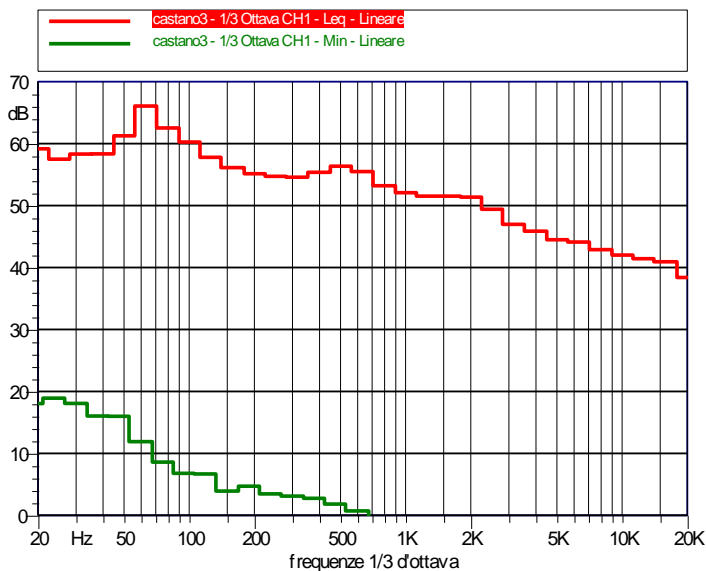


Nome: castano3		
Annotazioni: strada nova alto	Data: 09/06/2008	Ora: 12.12.59
	Località: castano	
	Operatore: Ing.Porta Marco	
Durata Misura: 1800.0 sec	Strumentazione: SoundBook S/N: 18542624	



LAeq	LAmin	LAmax	LN01	LN10	LN50	LN90	LN95
62.8 dBA	35.1 dBA	96.5 dBA	69.0 dBA	64.4 dBA	57.4 dBA	47.2 dBA	45.0 dBA

Leq (originale): 62.8 dBA



Hz	dB
20 Hz	59.2
25 Hz	57.5
31.5 Hz	58.3
40 Hz	58.4
50 Hz	61.3
63 Hz	66.1
80 Hz	62.5
100 Hz	60.3
125 Hz	57.8
160 Hz	56.1
200 Hz	55.2
250 Hz	54.7
315 Hz	54.6
400 Hz	55.4
500 Hz	56.4
630 Hz	55.5
800 Hz	53.2
1000 Hz	52.1
1250 Hz	51.5
1600 Hz	51.5
2000 Hz	51.4
2500 Hz	49.4
3150 Hz	47.0
4000 Hz	45.9
5000 Hz	44.5
6300 Hz	44.1
8000 Hz	42.9
10000 Hz	42.0
12500 Hz	41.4
16000 Hz	40.9
20000 Hz	38.4

Hz	dB
20 Hz	37.8
25 Hz	38.6
31.5 Hz	38.6
40 Hz	36.5
50 Hz	38.9
63 Hz	39.8
80 Hz	39.0
100 Hz	36.9
125 Hz	36.9
160 Hz	32.8
200 Hz	29.5
250 Hz	27.7
315 Hz	27.6
400 Hz	24.8
500 Hz	25.6
630 Hz	24.4
800 Hz	24.0
1000 Hz	23.7
1250 Hz	22.7
1600 Hz	21.6
2000 Hz	20.2
2500 Hz	16.3
3150 Hz	16.3
4000 Hz	14.9
5000 Hz	10.8
6300 Hz	8.9
8000 Hz	7.6
10000 Hz	7.1
12500 Hz	6.3
16000 Hz	5.3
20000 Hz	4.3

Punto n. 26

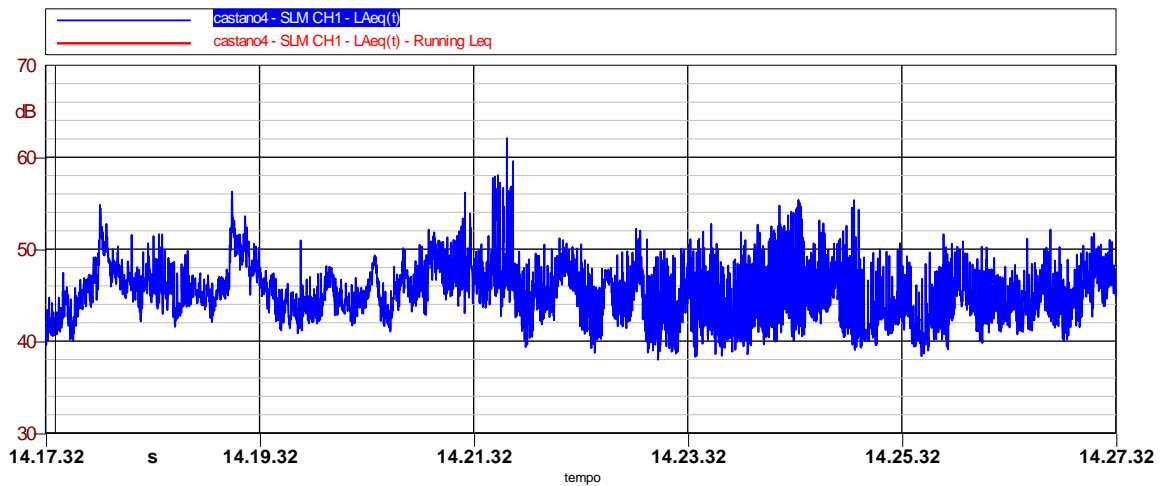
Strada Malpensa Boffalora

Posizione: cavalcavia strada arretrato circa 50 m

Rilievi diurni

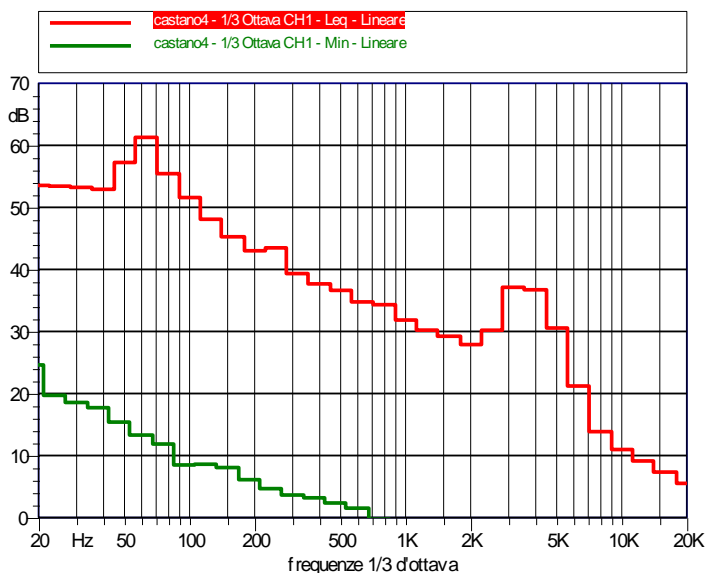


Nome: castano4		
Annotazioni: strada nova alto	Data: 09/06/2008	Ora: 14.17.32
	Località: castano	
	Operatore: Ing.Porta Marco	
Durata Misura: 600.0 sec	Strumentazione: SoundBook S/N: 18629544	



LAeq	LAmin	LAmax	LN01	LN10	LN50	LN90	LN95
46.4 dBA	38.0 dBA	62.1 dBA	53.1 dBA	48.7 dBA	45.3 dBA	42.3 dBA	41.5 dBA

Leq (originale): 46.4 dBA



Hz	dB
20 Hz	53.5
25 Hz	53.4
31.5 Hz	53.2
40 Hz	52.9
50 Hz	57.2
63 Hz	61.3
80 Hz	55.5
100 Hz	51.6
125 Hz	48.1
160 Hz	45.3
200 Hz	43.0
250 Hz	43.5
315 Hz	39.3
400 Hz	37.7
500 Hz	36.6
630 Hz	34.8
800 Hz	34.3
1000 Hz	31.8
1250 Hz	30.2
1600 Hz	29.2
2000 Hz	27.9
2500 Hz	30.2
3150 Hz	37.1
4000 Hz	36.7
5000 Hz	30.6
6300 Hz	21.2
8000 Hz	13.9
10000 Hz	11.0
12500 Hz	9.1
16000 Hz	7.3
20000 Hz	5.5

Hz	dB
20 Hz	36.6
25 Hz	34.5
31.5 Hz	38.8
40 Hz	41.3
50 Hz	45.5
63 Hz	40.6
80 Hz	39.4
100 Hz	38.6
125 Hz	36.3
160 Hz	34.2
200 Hz	32.7
250 Hz	29.4
315 Hz	29.5
400 Hz	29.0
500 Hz	27.0
630 Hz	25.6
800 Hz	24.5
1000 Hz	24.1
1250 Hz	23.3
1600 Hz	22.4
2000 Hz	20.6
2500 Hz	20.4
3150 Hz	20.3
4000 Hz	18.6
5000 Hz	14.6
6300 Hz	10.6
8000 Hz	8.4
10000 Hz	7.5
12500 Hz	6.6
16000 Hz	5.5
20000 Hz	4.4

Punto n. 27

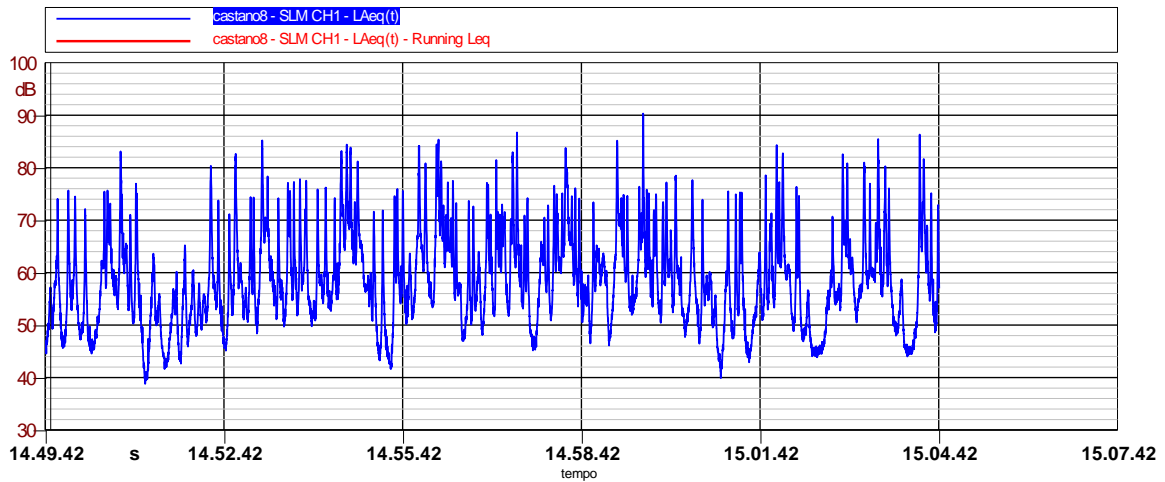
Strada Malpensa Boffalora

Posizione: lato strada direzione nord

Rilievi diurni

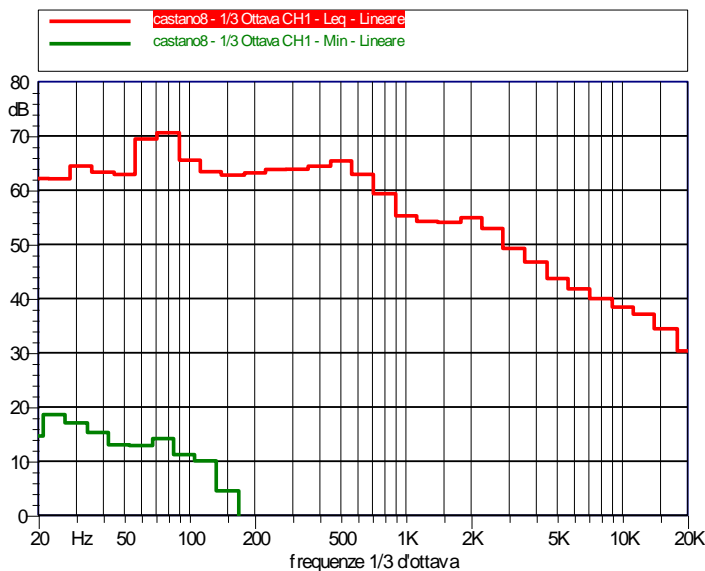


Nome: castano8		
Annotazioni: strada nova piazzola	Data: 09/06/2008	Ora: 14.49.42
	Località: castano	
	Operatore: Ing.Porta Marco	
Durata Misura: 900.5 sec	Strumentazione: SoundBook S/N: 18741456	



LAeq	LAmin	LAmax	LN01	LN10	LN50	LN90	LN95
68.8 dBA	38.8 dBA	90.3 dBA	81.7 dBA	71.5 dBA	57.6 dBA	47.5 dBA	45.3 dBA

Leq (originale): 68.8 dBA



Hz	dB	Hz	dB
20 Hz	62.1	20 Hz	37.3
25 Hz	62.1	25 Hz	37.4
31.5 Hz	64.4	31.5 Hz	37.7
40 Hz	63.3	40 Hz	40.4
50 Hz	62.9	50 Hz	38.5
63 Hz	69.4	63 Hz	42.5
80 Hz	70.6	80 Hz	40.9
100 Hz	65.5	100 Hz	39.2
125 Hz	63.4	125 Hz	36.9
160 Hz	62.8	160 Hz	36.8
200 Hz	63.2	200 Hz	38.0
250 Hz	63.8	250 Hz	35.1
315 Hz	63.9	315 Hz	33.9
400 Hz	64.4	400 Hz	28.4
500 Hz	65.4	500 Hz	18.9
630 Hz	62.9	630 Hz	20.1
800 Hz	59.3	800 Hz	19.8
1000 Hz	55.3	1000 Hz	21.6
1250 Hz	54.2	1250 Hz	22.9
1600 Hz	54.1	1600 Hz	22.1
2000 Hz	54.9	2000 Hz	21.4
2500 Hz	52.9	2500 Hz	18.0
3150 Hz	49.2	3150 Hz	16.4
4000 Hz	46.7	4000 Hz	13.4
5000 Hz	43.7	5000 Hz	11.6
6300 Hz	41.8	6300 Hz	10.2
8000 Hz	40.0	8000 Hz	9.6
10000 Hz	38.4	10000 Hz	8.6
12500 Hz	37.1	12500 Hz	7.5
16000 Hz	34.4	16000 Hz	5.9
20000 Hz	30.3	20000 Hz	4.6

RILIEVI FONOMETRICI EFFETTUATI

Sono stati effettuati complessivamente 22 rilievi fonometrici diurni e/o notturni (in alcuni punti plurimi).

Sono stati effettuati inoltre complessivamente cinque (23-27) rilievi fonometrici diurni sulla nuova strada Malpensa Boffalora.

I punti di rilevamento sono stati contrassegnati con una numerazione (vedi tabella sopra riportata).

Tali punti sono stati ritenuti i più rappresentativi per la determinazione del clima acustico del Comune. Essi infatti si trovano:

- sugli assi viari principali,
- sulla rotta di atterraggio di Malpensa
- nei diversi nuclei del comune e vicino a scuole e case di riposo.

Per la nuova strada i punti di rilievo sono stati scelti a livello della strada, sul cavalcavia della strada e in una posizione più distante dal cavalcavia. La strada attraversa il comune di Castano Primo tutta in trincea e in galleria, non sono presenti tratti a raso.

Dai rilievi effettuati si evince che il rumore prodotto dalla strada è quello tipico delle arterie di scorrimento e che a livello del cavalcavia presenta già una diminuzione di circa 5-6 dB(A), mentre in zone più lontane il rumore della strada non si percepisce.

La scelta dei punti di rilievo è stata fatta anche in relazione alla distribuzione della popolazione residente che per la maggior parte si trova nel nucleo cittadino di CASTANO PRIMO.

Dai rilievi effettuati si evince che il clima acustico del territorio comunale è complessivamente entro livelli medi nella zona di più vecchia urbanizzazione e medio-alti nelle zone lungo le statali statali e/o provinciali ed in alcune zone particolari.

STRUMENTAZIONE UTILIZZATA

L'apparato strumentale per le misure è costituito dalle seguenti apparecchiature:

Analizzatore sonoro Larson Davis, modello 824, matricola 755, in classe 1

Microfono mod. 2541 1/2" Free Field SN. 6253

Analizzatore sonoro Sinus Soundboobk, matricola 6214, in classe 1

Microfono modello MP201 1/2" SN 4401143

Calibratore acustico Larson Davisd modello CAL 200 SN. 2253

I sistemi sopra indicati sono stati tarati presso il centro di taratura SIT n. 163 come indicato all'art. 2 del Decreto 16.03.1998 "Tecniche di rilevamento e di misurazione dell'inquinamento acustico" in data 28.04.2006 e 19.01.2007.